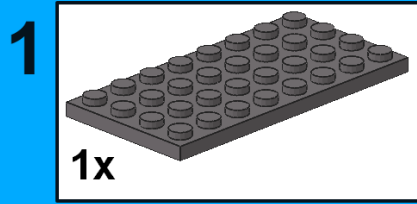
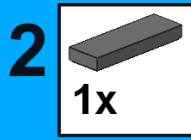
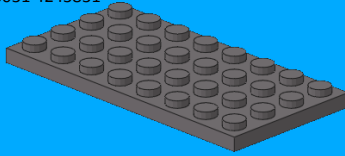


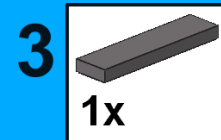
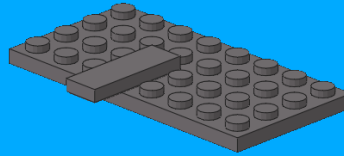
Servo Motor Box for LEGO® Train, Track Plastic (RC Trains) Switch Point



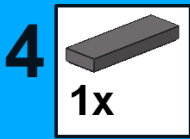
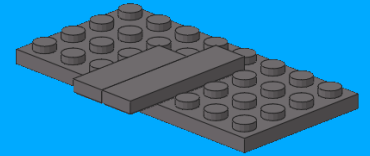
3031 4243831



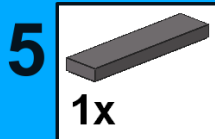
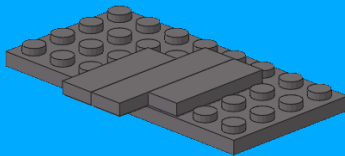
63864 4568734



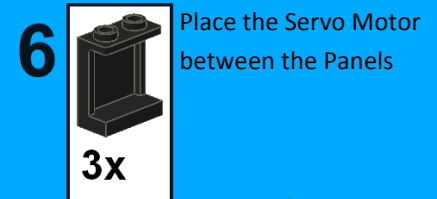
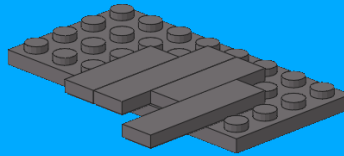
2431 4211053



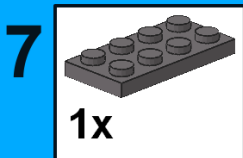
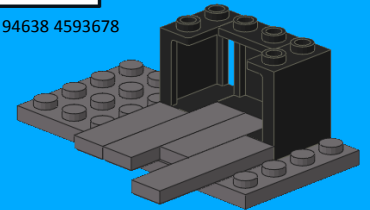
63864 4568734



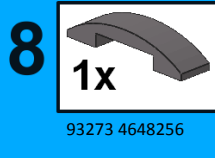
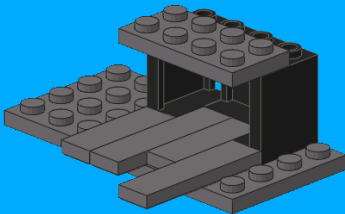
2431 4211053



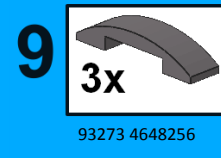
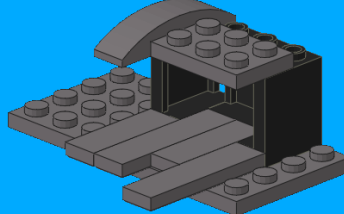
94638 4593678



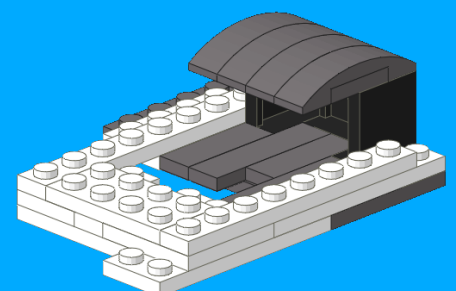
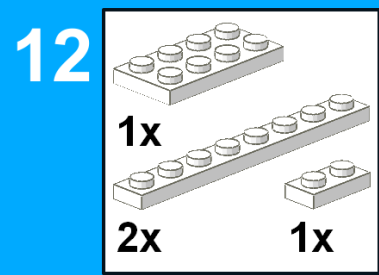
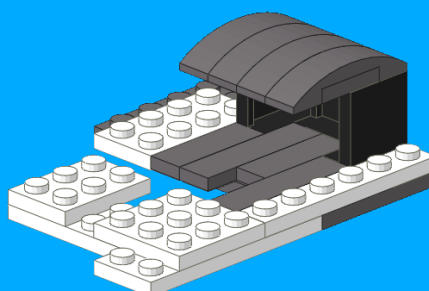
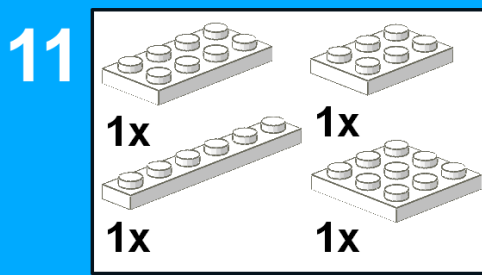
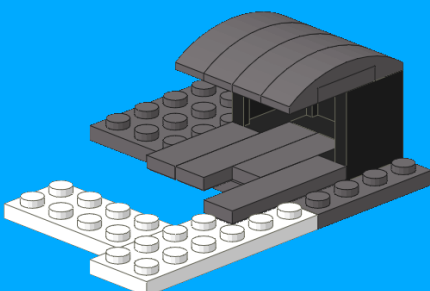
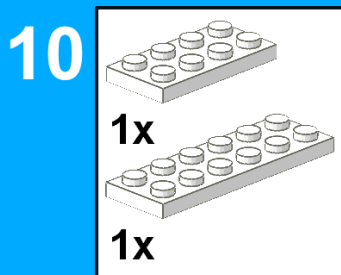
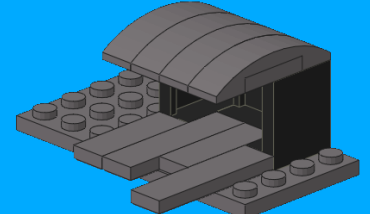
3020 4211065



93273 4648256



93273 4648256



Step 10 to 12 is a proposal for a reinforcement structure over the change track switcher to ensure operational stability and is built by your own parts.