







 1844 KERN is founded – precision balances are produced	 1863 A proud Gottlieb Kern with his staff	 1880 Pharmaceutical balance with Aesculap	 1923 Inflation – KERN wages are paid with self printed currency	 1980 The electronic balance ousts mechanical devices
 1994 Accredited DKD laboratory (ISO 17025)	 2000 New premises in Balingen	 2002 Existing QM system certification in accordance with DIN EN ISO 9001:2000 standards	 2007 Approval for the manufacture of medical products (DIN EN 13485 and 93/42/EEC)	 2008 Authorisation for initial verification by the manufacturer (2009/23/EC)
 2009 Approval for the manufacture and sale of height rods (DIN EN 13485 and 93/42/EEC)	 2012 Verification point for non-automatic balances and test weights. New customer portal www.kern-sohn.com goes live	 2014 Expansion of the product range to include optical instruments (microscopes and refractometers)	 2015 Inauguration of Ziegelei 2.0 with computer-controlled high-bay warehouse	 2017 Come with KERN into the digital future: Expansion of the model ranges compatible with Industry 4.0, as well as the related services

MEDICAL SCALES


for clinics, doctors' surgeries, care facilities and vets



PROFESSIONAL MEASURING

2018

KERN Pictograms

 Adjusting program CAL: For quick setting up of the balance's accuracy. External adjusting weight required.	 Hold function: When the weighing conditions are unstable, a stable weight is calculated as an average value.	 Binocular Microscope: For the inspection with both eyes
 Data interface RS-232: To connect the balance to a printer, PC or network.	 Protection against dust and water splashes IPxx: The type of protection is shown in the pictogram.	 Trinocular Microscope: For the inspection with both eyes and the additional option for the connection of a camera
 RS-485 data interface: To connect the balance to a printer, PC or other peripherals. Suitable for data transfer over large distances. Network in bus topology is possible	 Stainless steel: The balance is protected against corrosion.	 Abbe Condenser: With high numerical aperture for the concentration and the focusing of light.
 Bluetooth® data interface: To transfer data from the balance to a printer, PC or other peripherals.	 Suspended weighing: Load support with hook on the underside of the balance.	 Halogen illumination: For pictures bright and rich in contrast.
 Control outputs (optocoupler, digital I/O): To connect relays, signal lamps, valves, etc.	 Battery operation: Ready for battery operation. The battery type is specified for each device.	 LED illumination: Cold, energy saving and especially long-life illumination.
 Statistics: using the saved values, the device calculates statistical data, such as average value, standard deviation etc.	 Rechargeable battery pack: Rechargeable set.	 Fluorescence illumination for compound microscopes: With 100 W mercury lamp and filter.
 PC Software: to transfer the measurements from the device to a PC.	 Battery operation rechargeable: Prepared for a rechargeable battery operation	 Fluorescence illumination for compound microscopes: With 3 W LED illumination and filter.
 Wireless data transfer: between the weighing unit and the evaluation unit using an integrated radio module.	 Universal mains adapter: with universal input and optional input socket adapters for A) EU, GB C) EU, GB, CH, USA, AUS.	 Phase contrast unit: For a higher contrast.
 GLP/ISO-Protokoll: With date and time. Only with KERN printers.	 Mains adapter: 230V/50Hz in standard version for EU. On request GB, AUS or USA version available.	 Darkfield condenser/unit: For a higher contrast due to indirect illumination
 Piece counting: Reference quantities selectable. Display can be switched from piece to weight.	 Power supply: Integrated in balance. 230V/50Hz standard EU. More standards e.g. GB, AUS or USA on request.	 Polarising unit: To polarise the light.
 Totalsing level A: The weights of similar items can be added together and the total can be printed out.	 Weighing principle: Strain gauges: Electrical resistor on an elastic deforming body.	 Infinity system: Infinity corrected optical system.
 Weighing units: Can be switched to e.g. nonmetric units at the touch of a key. Please refer to website for more details.	 Peak hold function: capturing a peak value within a measuring process.	 Automatic temperature compensation: For measurements between 10 °C and 30 °C
 Weighing with tolerance range: (Check weighing) Upper and lower limiting can be programmed individually, e.g. for sorting and dosing. The process is supported by an audible or visual signal, see the relevant model	 Push and Pull: the measuring device can capture tension and compression forces.	 Verification possible: The time required for verification is specified in the pictogram.
 Integrated scale: In the eyepiece.	 Package shipment: The time required for internal shipping preparations is shown in days in the pictogram.	 Pallet shipment: The time required for internal shipping preparations is shown in days in the pictogram.
 360° rotatable microscope head		
 Monocular Microscope: For the inspection with one eye		

*The Bluetooth® word mark and logos are registered trademarks owned by Bluetooth SIG, Inc. and any use of such marks by KERN & SOHN GmbH is under license. Other trademarks and trade names are those of their respective owners.

KERN – Your partner for Medical scales

Quality & Experience

We are absolutely committed to making products available to you which are of excellent build quality, are extremely robust, have a long service life and are easy to use too. These three factors: quality, durability and ease of operation have been hallmarks of our products for over 170 years.

Conformity

Particularly in the medical environment, balances are subject to extensive standards and regulations, which serve to protect the users and patients. Over and above these standards, our certified quality management system, as well as our 20 trained medical product advisers ensure rapid and competent product advice on all aspects of medical weighing technology.

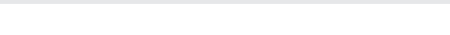
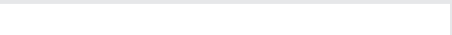
Promptness

The right product, at the right time, in the right place – that is our strength. With our sophisticated internal logistics system we can make sure your order is ready for delivery within 24 hours (plus calibration time if applicable). So you can react quickly to your customers' requirements and requests.

Professionalism and trust

On the subject of competent advice: Competence coupled with reliability – for centuries this has been the guiding principle of our company. This is why KERN sells its products exclusively through authorised dealers.

Albert & Martin Sauter, Managing Directors
[Balingen, December 2017]

	competent	
	<ul style="list-style-type: none"> • DAKkS accreditation DIN EN ISO/IEC 17025 • Certified QM system DIN EN ISO 9001 • Authorisation for initial verification by the manufacturer 2014/31/EU • Medical certifications DIN EN ISO 13485 and 93/42/EEC 	

Notes

Measuring technology, microscopy and testing services from a single source



Medical scales catalogue

Balances & Test service catalogue

Microscopes & refractometers catalogue

SAUTER measuring equipment catalogue

KERN DAKkS calibration service brochure

KERN MEDICAL SCALES 2018

KERN Models A – Z	
E	
EMB	59
EOB/EOB-F/EOE-B	62
EOS/EOS-F	64
F	
FH/FK	51
FOB-NS/FOB-N	60
FXN	49
H	
HCB/HCN	58
M	
MAP	50
MBB	08
MBC	06
MBD	09
MBE	10
MCB	42
MCC	44
MCD	46
MGB	28
MGC	25
MGD	27
MFB	29
MPB	16
MPC	18
MPD	20
MPE	12
MPI	24
MPK/MPL	22
MPS	14
MPT	26
MSB	05
MSC	05
MSF	05
MSW	04
MTA	40
MTS	38
MWA	30
MWB	32
MWS	34
MWS-L	36
N	
NFN	48
O	
OBE	52
OBF/OBL	53
OBN	54
OCM	55
ORA	56
S	
SXS	61

Height measuring systems

MS...	■	Tape for measuring circumference, Height rods	04, 05
-------	---	---	--------

Baby scales

MBC	■ ■	Baby scale	06
MBB	■ ■	Baby scale	08
MBD		Baby scale	09
MBE		Baby scale	10

Personal floor scales

MPE	■ ■	Personal floor scale	12
MPS	■ ■	Personal floor scale	14
MPB		Personal floor scale	16
MPC	■ ■	Personal floor scale	18
MPD · MPD-E	■ ■	Personal floor scale/Doctor scale	20
MPK · MPL		Personal floor scales	22
MPI		Personal floor scale	24
MGC		Mechanical personal floor scale	25

Obesity scales

MPT	■ ■	Obesity scale	26
-----	-----	---------------	----

Bathroom scales

MGD		Bathroom scale	27
MGB		Bathroom scale	28

Body analysis scales

MFB		Body analysis scale	29
-----	--	---------------------	----

Wheelchair platform scales

MWA	■ ■	Wheelchair platform scale	30
MWB		Wheelchair platform scale	32
MWS	■ ■	Wheelchair platform scale	34

Stretcher scales

MWS-L	■ ■	Stretcher scale	36
-------	-----	-----------------	----

Handrail scales

MTS	■ ■	Handrail scale	38
MTA	■ ■	Handrail scale	40

Chair scales

MCB	■ ■	Chair scale	42
MCC	■ ■	Chair scale	44
MCD		Chair scale	46

Laundry cart scales

NFN	■	Laundry cart scale	48
-----	---	--------------------	----

Organ scales

FXN		Organ scale	49
-----	--	-------------	----

Dynamometers

MAP		Digital dynamometer	50
FK · FH		Digital dynamometers for medical applications	51

Microscopes

OBE-1		Compound microscope	52
OBF-1 · OBL-1		Compound microscopes	53
OBN-1		Compound microscope	54
OCM-1		Inverted microscopes	55

Refractometer

ORA		Analogue refractometer	56
-----	--	------------------------	----

Veterinary scales

HCB · HCN		Hanging scales	58
EMB		Small pet scale	59
FOB-NS · FOB-N		Stainless steel small pet scales	60
SXS	■	Stainless steel animal scales	61
EOB · EOB-F · EOE		Veterinary scales	62
EOS · EOS-F		Veterinary scales	64

Annex

Legal notice/Retailer information			66
-----------------------------------	--	--	----

■ Approved Medical Device

■ EC type approval

Tape for measuring circumference for professional use in medical diagnostics



NEW

5x **1 KERN MSW 200**

Convenient tape for measuring circumference with practical pull-out mechanism

Features

- Continuous pull-out tape measure for e.g. precise measurement around the body
- Ideal to determine the WHR (Waist-to-Hip-Ratio), which can give information about the distribution of the body's fat deposits using an indirect determination of abdominal fat
- Useful diagnosis instrument
- With integrated feed mechanism
- The easiest handling:
 - Pull out the tape measure,
 - Hang it in the recess provided for this,
 - Operate the feed mechanism,
 - Read measurement value with millimetre precision
- Tape measure length 2,05 m (80 inch)
- Net weight approx. 0,05 kg
- **Note:** The models are only delivered in a set of 5 units. The price refers to a delivery of 5 items. Cannot be delivered individually.

STANDARD



When every centimetre counts – mechanical height rods approved as a medical device for professional use in medical diagnostics



2



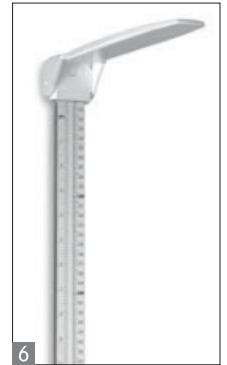
4



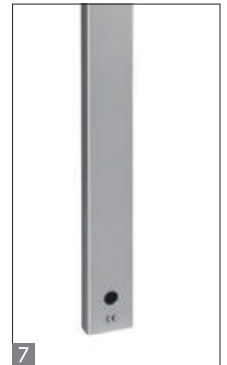
3



5



6



7

2 KERN MSB 80

Portable mechanical height rod

Features

- Approved as a medical device according to 93/42/EEC
- For babies of up to 80 cm in length
- Measuring range 10–80 cm; increments of 1 mm
- Large guide surfaces make handling easier (aligning, shifting, reading)
- 3 Measuring scale begins with 0 at right and left, so it can be used in both directions
- Height rod can be taken apart for compact storage
- Overall dimensions max. W×D×H 890×330×100 mm
- Net weight approx. 0,7 kg

4 KERN MSC 100

Portable mechanical height rod

Features

- Approved as a medical device according to 93/42/EEC
- For infants up to a maximum of 100 cm in length
- Measuring range 6,5–100 cm (2½–39¼ inch); increments of 1 mm (¼ inch)
- Readout on scale with moveable stop
- Sturdy aluminum profile
- Stop can be folded for compact storage
- Overall dimensions max. W×D×H 1040×290×55 mm
- Net weight approx. 0,8 kg

5 KERN MSF 200

Mechanical height rod

Features

- Approved as a medical device according to 93/42/EEC
- Measuring range 60–205 cm (23½–78¾ inch); increments of 1 mm (¼ inch)
- 6 Readout on scale with moveable, foldable stop or mounting on KERN scales MPS-PM (page 14), MPB-P (page 16) MTS-M (page 38) or 7 wall-mounted
- Sturdy aluminum profile
- Overall dimensions max. W×D×H 60×330×1630 mm
- Net weight approx. 0,7 kg

STANDARD



Elegantly-shaped baby scale – with EC type approval class III and approval for professional mobile or stationary medical use in medical diagnostics





Features

- Verification class III (verification is optional)
- Approved as a medical device according to 93/42/EEC
- Popular in paediatrics, because it has a large weighing pan, which is ergonomically rounded and therefore ideally suited for weighing neonates
- **2** Special function for neonatology centres: Difference function for calculating the weight gain before and after feeding
- Robust ABS plastic. For easy and hygienic cleaning
- Secure and non-slip positioning with rubber feet
- Hold function:
When patients do not lie completely still, a stable weight is calculated using an average weight and this is then “frozen”. This means that you have sufficient time to attend to the young patient first and then take the weight reading in peace
- Battery- or mains-powered, rechargeable battery operation optional

Technical data

- Backlit LCD display, digit height 25 mm
- Dimensions of tray
W×D×H 600×280×55 mm
- Overall dimensions
W×D×H 600×400×110 mm
- Overall dimensions incl. optional height rod
W×D×H 890×470×175 mm
- Battery operation possible, 6× 1,5V AA, not included, operating time up to 20 h
- Mains adapter (external) included
- Net weight approx. 5,5 kg

Accessories

- **1** Mechanical height rod to fix to the scale, measuring range 80 cm, increments of 1 mm, KERN MBC-A01
- **3** Foot/head rest to fix to the lying surface for even more safety when weighing small children, scope of delivery: 1 head rest and 1 foot rest, KERN MBC-A05
- **4** Carrying case for mobile use, only for models without height rod, KERN MBC-A02
- Protective working cover over the display device, standard, can be re-ordered, scope of delivery: 5 items, KERN MBC-A06S05
- Internal rechargeable battery pack, operating time up to 40 h, without backlight, charging time approx. 12 h, KERN MBC-A08
- Cleaning cloths, alcohol-free cloths for wipe disinfectant. Fulfill the legal requirements for occupational safety in accordance with TRGS 525/540. Packaging contents 80 pcs., size 20×22 cm per cloth, KERN MYC-01

STANDARD				OPTION		FACTORY	
						*	
MOVE	BATT	MULTI	1 DAY	ACCU	M	+3 DAYS	

* Within the EU, official verification is mandatory by law for scales that are intended for use as a medical device. Please add this to your order. We require the location of use and the post code for the verification.

Model	Weighing range [Max] kg	Readout [d] kg	Verification value [e] kg	Mandatory by law Verification	
					KERN
MBC 15K2DM	6 15	0,002 0,005	0,002 0,005	965-128	
MBC 20K10M	20	0,01	0,01	965-128	



Baby scale – with EC type approval class III and approval for professional mobile or stationary medical use in medical diagnostics

Features

- Verification class III (verification is optional)
- Approved as a medical device according to 93/42/EEC
- Large, ergonomically optimised tray for safe weighing of neonates
- **1** Removable tray enables use as a scale for infants as well
- Robust ABS plastic. For easy and hygienic cleaning
- Secure and non-slip positioning with height-adjustable rubber feet
- Level indicator to level the balance precisely
- Hold function:
When patients do not stand or lie completely still, a stable weight is calculated using an average weight and this is then “frozen”. This means that you have sufficient time to attend to the young patient first and then take the weight reading in peace
- Wall mount for display device
- Battery- or mains-powered, rechargeable battery operation optional

Technical data

- LCD display, digit height 25 mm
- Dimensions of tray
WxD 550x240 mm
- Dimensions of weighing plate
WxDxH 250x250x70 mm
- Dimensions of display device
WxDxH 210x110x50 mm
- Overall dimensions
WxDxH 560x288x136 mm
- Cable length of display device approx. 50 cm
- Battery operation possible, 6x 1,5V AA, not included, operating time up to 120 h
- Mains adapter (external) included
- Net weight approx. 4 kg

Accessories

- Carrying case for mobile use, KERN MBB-A02
- **2** Stand to elevate display device, height of stand approx. 450 mm, KERN EOB-A01
- Protective working cover over the display device, standard, can be re-ordered, scope of delivery: 5 items, KERN EOB-A02S05
- Cleaning cloths, alcohol-free cloths for wipe disinfectant, quick-acting, on basis of modern quaternary ammonium compounds, and also against papova viruses. Particularly gentle on materials, and therefore very well suited for the disinfection of alcohol sensitive medical products. Fulfill the legal requirements for occupational safety in accordance with TRGS 525/540. Packaging contents 80 pcs., size 20x22 cm per cloth KERN MYC-01
- Internal rechargeable battery pack, operating time up to 50 h, charging time approx. 24 h, KERN FOB-A08

STANDARD	OPTION	FACTORY
MOVE BATT MULTI 1 DAY	ACCU	M +3 DAYS

* Within the EU, official verification is mandatory by law for scales that are intended for use as a medical device. Please add this to your order. We require the location of use and the post code for the verification.

Model	Weighing range	Readout	Verification value	Mandatory by law Verification	
				KERN	
KERN MBB 15K2DM	[Max] kg 6 15	[d] kg 0,002 0,005	[e] kg 0,005		965-128



Ergonomically-optimised baby scale with large lying surface

Features

- Modern design
- Large, ergonomically optimised tray for safe weighing of neonates
- Robust plastic tray
- For easy and hygienic cleaning
- Particularly flat and lightweight construction, so it is easy to transport and store
- Secure and non-slip positioning with height-adjustable rubber feet
- Easy to use
- Data hold function: for easy reading of the weight display
- Special function for neonatology centres: Difference function for calculating the weight gain before and after feeding
- Internal weight memory for a weight value
- Integrated AUTO-OFF function to preserve the batteries
- Weight displayed in kg or lb
- **Note:** The models are only delivered in a set of 5 units. I.e. the price given in the table refers to a delivery of 5 items. Cannot be delivered individually.

Technical data

- LCD display, digit height 30 mm
- Dimensions of tray
W×D 560×225 mm
- Overall dimensions
W×D×H 650×350×55 mm
- Batteries included, 2× 1,5V AAA, operating time up to 20 h
- Net weight approx. 2 kg

Accessories

- Cleaning cloths, alcohol-free cloths for wipe disinfectant, quick-acting, on basis of modern quaternary ammonium compounds, and also against papova viruses. Particularly gentle on materials, and therefore very well suited for the disinfection of alcohol sensitive medical products. Fulfill the legal requirements for occupational safety in accordance with TRGS 525/540. Packaging contents 80 pcs., size 20×22 cm per cloth KERN MYC-01

STANDARD



Model	Weighing range	Readout	
KERN	[Max] kg	[d] kg	
MBD 20K-2S05	15	0,01	



Affordable baby scale for an optimum start in life

Features

- **1** Ergonomic tray with high side walls for the safe weighing of neonates
- Robust plastic tray
- **2** For easy and hygienic cleaning
- Particularly flat design
- Secure and non-slip positioning with rubber feet
- Simple and convenient 1-key operation
- Automatic Data hold function:
When the weighing value remains unchanged the weight indicated on the display is automatically "frozen" for 10 sec. This leaves sufficient time to read the weight in peace

Technical data

- LCD display, digit height 15 mm
- Dimensions of tray
W×D 460×260 mm
- Overall dimensions
W×D×H 560×350×88 mm
- Batteries included, 4× 1,5V AA, operating time up to 200 h
- Net weight approx. 2 kg

Accessories

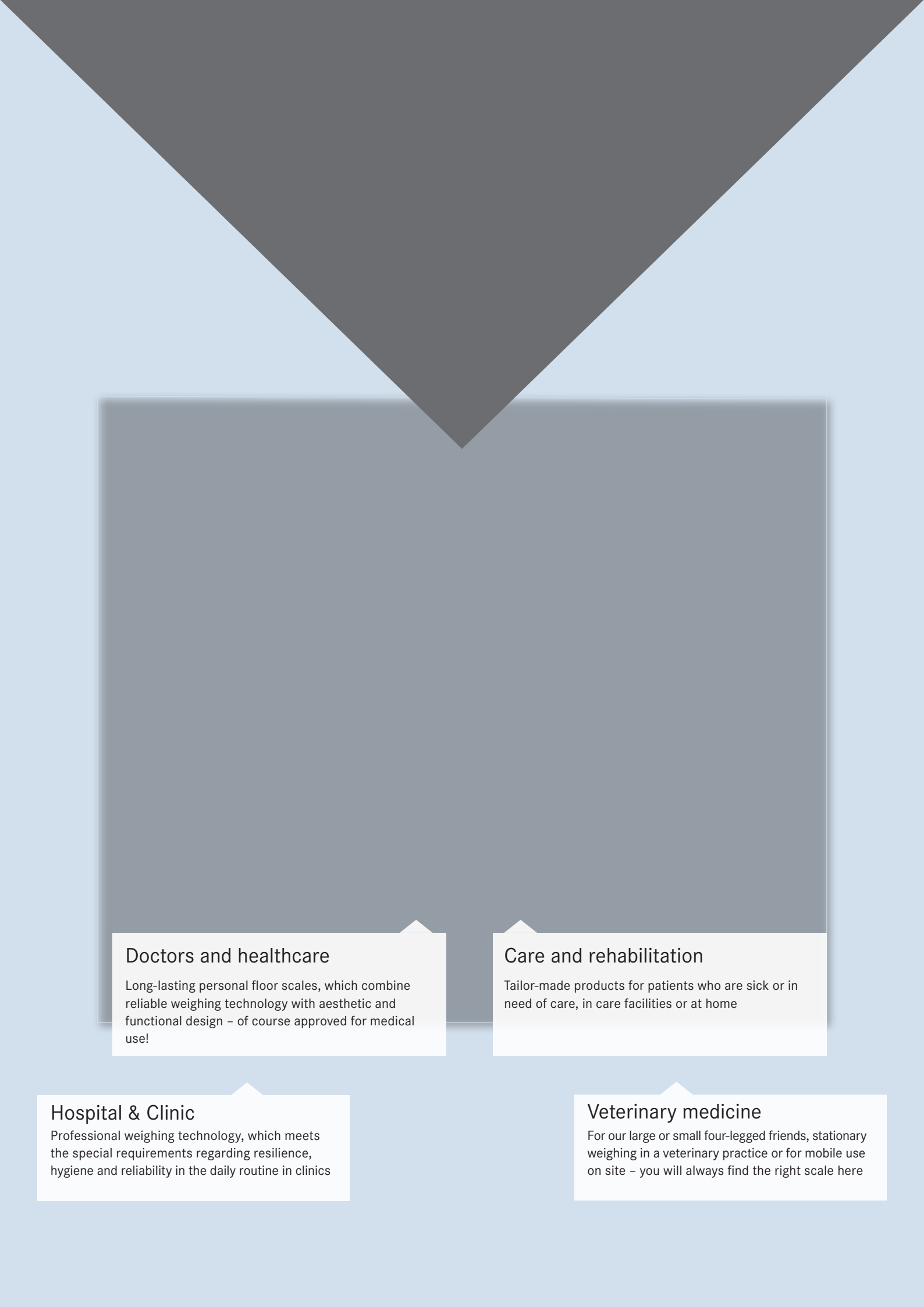
- Cleaning cloths, alcohol-free cloths for wipe disinfectant, quick-acting, on basis of modern quaternary ammonium compounds, and also against papova viruses. Particularly gentle on materials, and therefore very well suited for the disinfection of alcohol sensitive medical products. Fulfill the legal requirements for occupational safety in accordance with TRGS 525/540. Packaging contents 80 pcs., size 20×22 cm per cloth KERN MYC-01

STANDARD



Model	Weighing range	Readout	
	[Max] kg	[d] kg	
KERN			
MBE 20K10	20	0,01	

Price reduction



Doctors and healthcare

Long-lasting personal floor scales, which combine reliable weighing technology with aesthetic and functional design – of course approved for medical use!

Care and rehabilitation

Tailor-made products for patients who are sick or in need of care, in care facilities or at home

Hospital & Clinic

Professional weighing technology, which meets the special requirements regarding resilience, hygiene and reliability in the daily routine in clinics

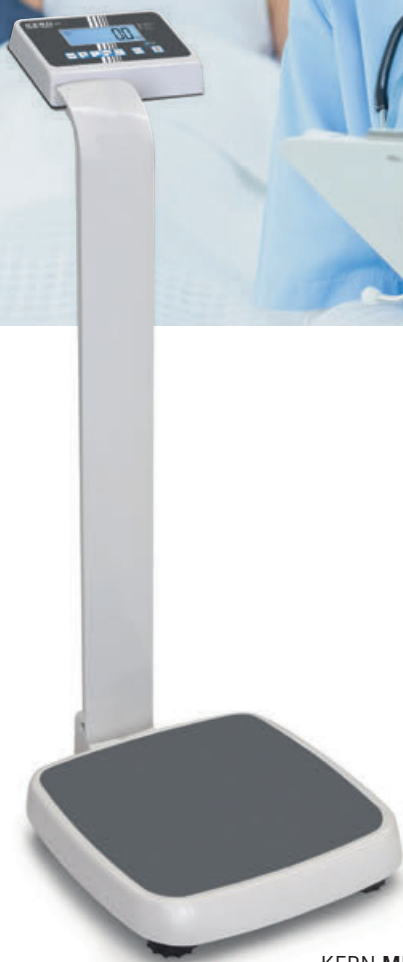
Veterinary medicine

For our large or small four-legged friends, stationary weighing in a veterinary practice or for mobile use on site – you will always find the right scale here

Professional personal floor scale with BMI function – with EC type approval class III and approval for professional medical use in medical diagnostics



KERN MPE-HM
with stand and
height rod



KERN MPE-PM
with stand



Features

- Verification class III (verification is optional)
- Approved as a medical device according to 93/42/EEC
- **1** Practical second display on the back of the balance, which makes it easy for both the patient and the doctor or nursing staff to read the weight
- **2** The MPE-HM model has an elegant height measuring stick integrated into the column, which can be pulled out for use and which has a sturdy plastic head rest and a measuring range from 88-205 cm
- The ergonomically optimised shape and robust design mean that this range is ideal for daily use in a professional environment
- Secure and non-slip positioning with height-adjustable rubber feet.
- Level indicator to level the balance precisely
- Large platform with non-slip and wear-resistant surface made of plastic, to provide a secure footing for patients
- Hold function: When patients do not stand completely still, a stable weight is calculated using an average weight and this is then “frozen”. This means that you have sufficient time to attend to the patient first and then take the weight reading in peace

- Mother and child function: the mother’s weight will be taken and then the scale will be reset to zero at the push of a button. Then the mother and baby can be weighed together. The weight of the child will now be shown on the display. This is particularly good for infants, as this way they can be cradled, safe and sound, in the arms of their mother while being weighed
- BMI function to determine underweight/normal weight/surplus weight
- High resolution readout: Readout [d] for 5 sec. increased by one decimal place at the touch of a key
- **3** Easy to transport thanks to the two integrated transport wheels
- Battery- or mains-powered, rechargeable battery operation optional

- Battery operation possible, 6× 1,5V AA, not included, operating time up to 20 h
- Mains adapter (external) included
- Data interface RS-232 standard
- Net weight approx. 12 kg

Accessories

- Protective working cover over the display device, standard, can be re-ordered, scope of delivery: 5 items, KERN MPE-A01S05
 - Cleaning cloths, alcohol-free cloths for wipe disinfectant. Fulfill the legal requirements for occupational safety in accordance with TRGS 525/540. Packaging contents 80 pcs., size 20×22 cm per cloth, KERN MYC-01
 - Internal rechargeable battery pack, operating time up to 40 h, without backlight, charging time approx. 12 h, KERN MBC-A08
 - Interface cable RS-232C to connect an external device, KERN CFS-A01
 - Matrix needle printer, KERN YKN-01
 - Label printer, KERN YKE-01
 - Thermal printer, KERN YKB-01N
- For more details see the internet

Technical data

- Large backlit LCD display, digit height 25 mm
- Dimensions of weighing plate
W×D×H 365×360×80 mm
- Overall dimensions
MPE-HM: W×D×H 365×620×2125 mm (with extracted height rod),
MPE-PM: W×D×H 365×450×1020 mm

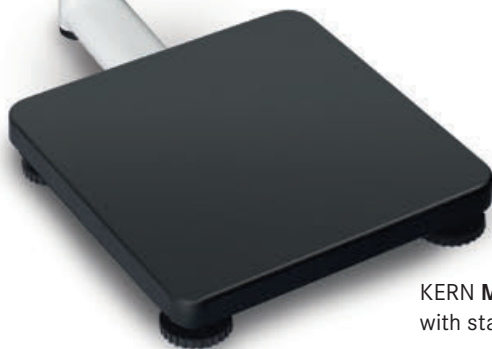
STANDARD					OPTION		FACTORY	

* Within the EU, official verification is mandatory by law for scales that are intended for use as a medical device. Please add this to your order. We require the location of use and the post code for the verification.

Model	Weighing range [Max] kg	Readout [d] kg	Verification value [e] kg	Mandatory by law Verification	
					KERN
MPE 250K100PM	250	0,1	0,1	965-129	
MPE 250K100HM	250	0,1	0,1	965-129	

Personal floor scale KERN MPS

Professional personal floor scale with BMI function – with EC type approval class III and approval for professional medical use in medical diagnostics



KERN MPS-PM
with stand



KERN MPS-M
with free-standing
display device



Features

- Verification class III (verification is optional)
- Approved as a medical device according to 93/42/EEC
- Thanks to its compact dimensions and the good price/performance ratio, this range is ideally suited for use in treatment rooms in doctor's surgeries and hospitals
- Ergonomic display device with large numerical keypad and high-contrast LCD display for easy entry and reading of patient data, such as, for example, the height for calculating the BMI
- Sturdy steel weighing plate with a non-slip and wear-resistant surface
- For easy and hygienic cleaning
- **1** Secure and non-slip positioning with height-adjustable rubber feet
- **1** Level indicator to level the balance precisely
- Hold function:
When patients do not stand completely still, a stable weight is calculated using an average weight and this is then "frozen". This means that you have sufficient time to attend to the patient first and then take the weight reading in peace

- BMI function to determine underweight/normal weight/surplus weight
- **2** Wall mount for display device
- Battery- or mains-powered, rechargeable battery operation optional

Technical data

- LCD display, digit height 25 mm
- Dimensions of weighing plate W×D×H 275×295×58 mm
- Dimensions of display device W×D×H 210×110×50 mm
- Only MPS-PM:
Overall dimensions (incl. stand) W×D×H 275×460×1015 mm
- Cable length of display device (only for models without a stand) approx. 120 cm
- Battery operation possible, 6× 1,5V AA, not included, operating time up to 57 h
- Mains adapter (external) included
- Data interface RS-232 standard
- Net weight MPS-M approx. 4.8 kg, MPS-PM approx. 6 kg

Accessories

- **3** Sturdy transport case to protect and store the scale, only for models without a stand, KERN MPS-A07
 - **4** Mechanical measuring stick, measuring range: 60–205 cm, can be screwed onto the column from the front or the back (MPS-PM) or wall-mounted, approved as a medical device according to 93/42/EEC, KERN MSF 200
 - Protective working cover over the display device, standard, can be re-ordered, scope of delivery: 5 items, KERN EOB-A02S05
 - Cleaning cloths, alcohol-free cloths for wipe disinfectant. Fulfill the legal requirements for occupational safety in accordance with TRGS 525/540. Packaging contents 80 pcs., size 20×22 cm per cloth, KERN MYC-01
 - Internal rechargeable battery pack, operating time up to 50 h, charging time approx. 24 h, KERN FOB-A08
 - Interface cable RS-232C to connect an external device, KERN MPS-A08
 - Matrix needle printer, KERN YKN-01
 - Label printer, KERN YKE-01
 - Thermal printer, KERN YKB-01N
- For more details see the internet

STANDARD					OPTION		FACTORY	
RS 232	MOVE	BATT	MULTI	1 DAY	ACCU	M +3 DAYS*		

* Within the EU, official verification is mandatory by law for scales that are intended for use as a medical device. Please add this to your order. We require the location of use and the post code for the verification.

Model	Weighing range [Max] kg	Readout [d] kg	Verification value [e] kg		Mandatory by law Verification	
						KERN
MPS 200K100M	200	0,1	0,1		965-129	
MPS 200K100PM	200	0,1	0,1		965-129	



Personal floor scale KERN MPB

Personal floor scale with BMI function



KERN MPB-P
with stand



KERN MPB
with free-standing
display device



Features

- Sturdy steel weighing plate with a non-slip and wear-resistant surface
- For easy and hygienic cleaning
- Secure and non-slip positioning with rubber feet
- Hold function:
When patients do not stand completely still, a stable weight is calculated using an average weight and this is then “frozen”. This means that you have sufficient time to attend to the patient first and then take the weight reading in peace
- Simple and convenient 4-key operation
- BMI function to determine underweight/normal weight/surplus weight
- Wall mount for the display device, only for models without a stand
- Battery- or mains-powered

Technical data

- LCD display, digit height 25 mm
- Dimensions of weighing plate W×D×H 315×300×60 mm
- Dimensions of display device W×D×H 210×110×50 mm
- Only MPB-P: Overall dimensions (incl. stand) W×D×H 315×440×1010 mm
- Cable length of display device (only for models without a stand) approx. 120 cm
- Battery operation possible, 6× 1,5V AA, not included, operating time up to 170 h
- Mains adapter (external) included
- Net weight MPB approx. 4.6 kg, MPB-P approx. 6.4 kg

Accessories

- **1** Sturdy transport case to protect and store the scale, only for models without a stand, KERN MPS-A07
- **2** Mechanical measuring stick, measuring range: 60–205 cm, can be screwed onto the column from the front or the back (MPS-PM) or wall-mounted, approved as a medical device according to 93/42/EEC, KERN MSF 200
- Protective working cover over the display device, standard, can be re-ordered, scope of delivery: 5 items, KERN EOB-A02S05
- Cleaning cloths, alcohol-free cloths for wipe disinfectant, quick-acting, on basis of modern quaternary ammonium compounds, and also against papova viruses. Particularly gentle on materials, and therefore very well suited for the disinfection of alcohol sensitive medical products. Fulfill the legal requirements for occupational safety in accordance with TRGS 525/540. Packaging contents 80 pcs., size 20×22 cm per cloth KERN MYC-01

STANDARD



Model	Weighing range		Readout	
	[Max]		[d]	
KERN		kg		kg
MPB 300K 100	300		0,1	
MPB 300K 100P	300		0,1	

Personal floor scale KERN MPC

Professional personal floor scale – with EC type approval class III and approval for professional medical use in medical diagnostics



KERN MPC 250K100M, **NEW** MPC 300K-1M



NEW KERN MPC 300K-1LM



Features

- **NEW:** Version with [Max] = 300 kg and larger weighing plate! Specially suitable for weighing overweight patients who are in the obese category
- Verification class III (verification is optional)
- Approved as a medical device according to 93/42/EEC
- The bestseller for doctor's surgeries, chemists and hospitals
- Robust design for daily use in a professional environment
- For easy and hygienic cleaning
- Secure and non-slip positioning with height-adjustable rubber feet
- Level indicator to level the balance precisely
- **1** Sturdy handle for easy transportation of the scale
- **2** Flexible positioning of display device, e.g. free-standing or mounted to the wall. Wall mount for display device standard
- **3** + **4** Large platform with non-slip and wear-resistant surface made of plastic, to provide a secure footing for patients
- High resolution readout: Readout [d] for 5 sec. increased by one decimal place at the touch of a key
- BMI function to determine underweight/normal weight/surplus weight

- Hold function: When patients do not stand completely still, a stable weight is calculated using an average weight and this is then "frozen". This means that you have sufficient time to attend to the patient first and then take the weight reading in peace
- Mother and child function: the mother's weight will be taken and then the scale will be reset to zero at the push of a button. Then the mother and baby can be weighed together. The weight of the child will now be shown on the display. This is particularly good for infants, as this way they can be cradled, safe and sound, in the arms of their mother while being weighed
- Battery- or mains-powered, rechargeable battery operation optional

Technical data

- Large backlit LCD display, digit height 25 mm
- Dimensions of display device W×D×H 200×130×60 mm
- Cable length of display device approx. 150 cm
- Battery operation possible, 6× 1,5V AA, not included, operating time up to 20 h
- Mains adapter (external) included

Accessories

- Protective working cover over the display device, standard, can be re-ordered, scope of delivery: 5 items, KERN MBC-A06S05
 - Cleaning cloths, alcohol-free cloths for wipe disinfectant. Fulfill the legal requirements for occupational safety in accordance with TRGS 525/540. Packaging contents 80 pcs., size 20×22 cm per cloth, KERN MYC-01
 - Internal rechargeable battery pack, operating time up to 40 h, without backlight, charging time approx. 12 h, KERN MBC-A08
 - RS-232 data interface, must be ordered at purchase, KERN MPC-A01
 - Interface cable RS-232 to connect an external device, KERN CFS-A01
 - Matrix needle printer, KERN YKN-01
 - Label printer, KERN YKE-01
 - Thermal printer, KERN YKB-01N
- For more details see the internet

STANDARD					OPTION		FACTORY	
GLP	PRINTER	MOVE	BATT	MULTI	1 DAY	ACCU	RS 232	M
								+3 DAYS*

* Within the EU, official verification is mandatory by law for scales that are intended for use as a medical device. Please add this to your order. We require the location of use and the post code for the verification.

Model	Weighing range [Max] kg	Readout [d] kg	Verification value [e] kg	Weighing plate mm	Net weight approx. kg	Mandatory by law Verification	
							KERN
MPC 250K100M	250	0,1	0,1	365×370×80 3	9		965-129
MPC 300K-1M NEW	300	0,1	0,1	365×370×80 3	9		965-129
MPC 300K-1LM NEW	300	0,1	0,1	400×500×120 4	10		965-129



Step-on personal floor scale KERN MPD · MPD-E

Professional step-on personal floor scale approved as a medical device and with EC type approval class III



KERN MPD 250K100M



Features

- Verification class III (verification is optional)
- Approved as a medical device according to 93/42/EEC
- **1** The bestseller for doctor's surgeries, chemists and hospitals: easy to use with no time wasted – simply tap on it, stand on it, read the weight
- Robust design for daily use in a professional environment
- Ergonomically optimised design
- For easy and hygienic cleaning
- Secure and non-slip positioning with height-adjustable rubber feet
- Level indicator to level the balance precisely
- **2** Large platform with non-slip and wear-resistant surface made of plastic, to provide a secure footing for patients
- Doctor scale MPD 200K-1EM
Identically to MPD 250K100M though without backlight and mains adapter, battery operation only, due to the reduced resolution faster display speed.
- With a particularly attractive price!
- KERN MPD: Battery- or mains-powered, rechargeable battery operation optional

Technical data

- Dimensions of weighing plate
W×D×H 365×360×80 mm
- Dimensions of display device
W×D×H 200×130×60 mm
- Net weight approx. 10 kg

MPD-EM

- Large LCD display, without backlight digit height 25 mm
- Battery operation, 6× 1,5V AA, operating time up to 20 h

MPD-M

- Large backlit LCD display, digit height 25 mm
- Battery operation possible, 6× 1,5V AA, not included, operating time up to 20 h
- Mains adapter (external) included

Accessories

- Protective working cover over the display device, standard, can be re-ordered, scope of delivery: 5 items, KERN MBC-A06S05
- **3** Cleaning cloths, alcohol-free cloths for wipe disinfectant, quick-acting, on basis of modern quaternary ammonium compounds, and also against papova viruses. Particularly gentle on materials, and therefore very well suited for the disinfection of alcohol sensitive medical products. Fulfill the legal requirements for occupational safety in accordance with TRGS 525/540. Packaging contents 80 pcs., size 20×22 cm per cloth KERN MYC-01
- KERN MPD: Rechargeable battery pack internal, operating time up to 40 h, without backlight, charging time approx. 12 h, KERN MBC-A08

STANDARD	OPTION	FACTORY
BATT MULTI 1 DAY MPD	ACCU MPD	M ±3 DAYS*

* Within the EU, official verification is mandatory by law for scales that are intended for use as a medical device. Please add this to your order. We require the location of use and the post code for the verification.

Model	Weighing range [Max] kg	Readout [d] kg	Verification value [e] kg	Mandatory by law Verification	
				KERN	
MPD 250K 100M	250	0,1	0,1	965-129	
MPD 200K-1EM	250	0,2	0,2	965-129	



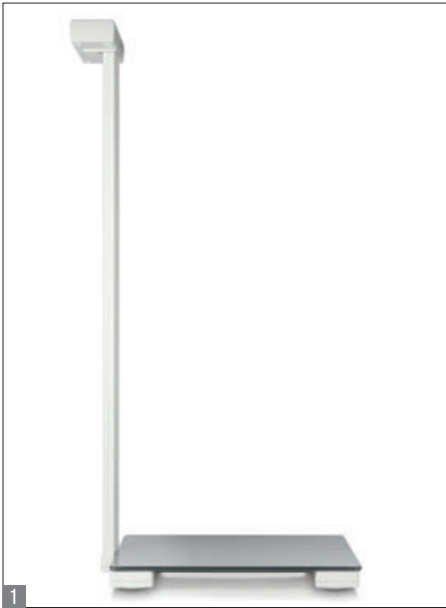
Personal scales with column for convenient, ergonomically-optimised operation



NEW

KERN MPL 200K-1P

KERN MPK 200K-1P



Features

- This personal scale is the ideal measuring instrument for elderly care, paramedics, fitness clubs or in the private sector and can handle weighing overweight persons weighing up to 250 kg
- The display device is easy to operate through the column which is firmly fixed to the scale and the weight can be read easily, even under poor lighting conditions
- Sturdy glass weighing plate for secure, comfortable standing position
- For easy and hygienic cleaning
- **1** Particularly flat design facilitates access
- Easy to operate:
simply tap on it – stand on it – read the weight
- Integrated AUTO-OFF function to preserve the batteries
- Only MPL: BMI function to determine underweight/normal weight/oveweight
- Weight displayed in kg or lb
- **2** Large high-contrast display that is easy to read

Technical data

- LCD display, digit height 28 mm
- Dimensions of weighing plate
W×D×H 350×350×45 mm
- Overall dimensions (incl. stand)
W×D×H 350×420×955 mm
- Batteries included, 4× 1,5V AA, operating time up to 20 h
- Net weight approx. 3,8 kg

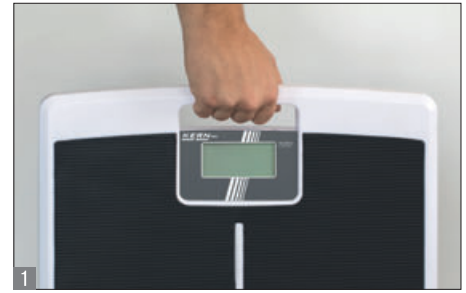
Accessories

- Cleaning cloths, alcohol-free cloths for wipe disinfectant, quick-acting, on basis of modern quaternary ammonium compounds, and also against papova viruses. Particularly gentle on materials, and therefore very well suited for the disinfection of alcohol sensitive medical products. Fulfill the legal requirements for occupational safety in accordance with TRGS 525/540. Packaging contents 80 pcs., size 20×22 cm per cloth KERN MYC-01

STANDARD



Model	Weighing range		Readout	
	[Max]	kg	[d]	kg
KERN				
MPK 200K-1P	250		0,1	
MPL 200K-1P	250		0,1	



Personal scale with particularly large, flat weighing plate to make it easier to step on and give maximum safety

Features

- This personal scale is the ideal measuring instrument for elderly care, paramedics or privat sector, and can handle weighing overweight persons weighing up to 200 kg
- Very large weighing plate
- For easy and hygienic cleaning
- **1** The scale can be easily transported using a handle and does not require much storage space
- **2** Particularly flat design facilitates access
- Very large platform with non-slip and wear-resistant plastic-surface
- Easy to operate:
simply tap on it – stand on it – read the weight
- Integrated AUTO-OFF function to preserve the batteries
- Weight displayed in kg or lb
- Large high-contrast display that is easy to read
- **Note:** The models are only delivered in a set of 5 units. I.e. the price given in the table refers to a delivery of 5 items. Cannot be delivered individually.

Technical data

- LCD display, digit height 30 mm
- Overall dimensions
W×D×H 433×370×35 mm
- Batteries included, 4× 1,5V AAA, operating time up to 20 h
- Net weight approx. 3 kg

Accessories

- Cleaning cloths, alcohol-free cloths for wipe disinfectant, quick-acting, on basis of modern quaternary ammonium compounds, and also against papova viruses. Particularly gentle on materials, and therefore very well suited for the disinfection of alcohol sensitive medical products. Fulfill the legal requirements for occupational safety in accordance with TRGS 525/540. Packaging contents 80 pcs., size 20×22 cm per cloth KERN MYC-01

STANDARD				OPTION	
UNIT	BATT	DMS	1 DAY	DAkkS	+3 DAYS

Model	Weighing range	Readout	
	[Max] kg	[d] kg	
KERN MPI 200K-1S05	200	0,1	



The classic robust scale for to measure body weight quickly

Features

- Timeless design
- Robust construction
- **1** Large, clear circular scale which is easy to read
- **2** Large platform with non-slip surface made of plastic
- Secure and non-slip positioning with rubber feet
- Easy to operate: simply tap on it – stand on it – read the weight
- Easy adjustment of the display using the setting wheel
- **Note:** The models are only delivered in a set of 5 units. I.e. the price given in the table refers to a delivery of 5 items. Cannot be delivered individually.

Technical data

- Digit height 8 mm
- Overall dimensions W×D×H 285×425×85 mm
- Net weight approx. 3,1 kg

Accessories

- Cleaning cloths, alcohol-free cloths for wipe disinfectant, quick-acting, on basis of modern quaternary ammonium compounds, and also against papova viruses. Particularly gentle on materials, and therefore very well suited for the disinfection of alcohol sensitive medical products. Fulfill the legal requirements for occupational safety in accordance with TRGS 525/540. Packaging contents 80 pcs., size 20×22 cm per cloth KERN MYC-01

STANDARD



Model	Weighing range	Readout	
KERN	[Max] kg	[d] kg	
MGC 100K-1S05	150	1	



Compact personal floor scale with obesity range – with EC type approval class III and approval for professional mobile or stationary medical use in medical diagnostics

Features

- Verification class III (verification is optional)
- Approved as a medical device according to 93/42/EEC
- Ideally suited for hospitals, clinics and doctor's surgeries as well as for mobile applications such as home visits or at sports events
- Thanks to the wide weighing range from 0 to 300 kg, this scale can be used to weigh children, adults of normal weight and overweight persons
- Large platform with non-slip and wear-resistant surface made of plastic, to provide a secure footing for patients
- Secure and non-slip positioning with height-adjustable rubber feet
- Level indicator to level the balance precisely
- Robust and compact design
- Hold function:
When patients do not stand completely still, a stable weight is calculated using an average weight and this is then "frozen". This means that you have sufficient time to attend to the patient first and then take the weight reading in peace

- BMI function to determine underweight/normal weight/surplus weight
- Wall mount for the display device
- Sturdy handle for easy transportation of the scale
- Battery- or mains-powered, rechargeable battery operation optional

Technical data

- LCD display, digit height 25 mm
- Dimensions of weighing plate W×D×H 450×340×90 mm
- Dimensions of display device W×D×H 210×110×50 mm
- Cable length of display device approx. 150 cm
- Battery operation possible, 6× 1,5V AA, not included, operating time up to 57 h
- Mains adapter (external) included
- Net weight approx. 8,5 kg

Accessories

- 1 Stand to elevate display device, height of stand approx. 950 mm, KERN MWS-A01
 - 2 Mechanical height rod, measuring range between 60–205 cm, for wall-mounting, approved as a medical device according to 93/42/EEC, KERN MSF 200
 - Protective working cover over the display device, standard, can be re-ordered, scope of delivery: 5 items, KERN EOB-A02S05
 - Cleaning cloths, alcohol-free cloths for wipe disinfectant. Fulfill the legal requirements for occupational safety in accordance with TRGS 525/540. Packaging contents 80 pcs., size 20×22 cm per cloth, KERN MYC-01
 - Internal rechargeable battery pack, operating time up to 50 h, charging time approx. 24 h, KERN FOB-A08
 - Interface cable RS-232C to connect an external device, KERN MPS-A08
 - Matrix needle printer, KERN YKN-01
 - Label printer, KERN YKE-01
 - Thermal printer, KERN YKB-01N
- For more details see the internet

STANDARD OPTION FACTORY

RS 232
 MOVE
 BATT
 MULTI
 1 DAY
 ACCU
 M +3 DAYS

* Within the EU, official verification is mandatory by law for scales that are intended for use as a medical device. Please add this to your order. We require the location of use and the post code for the verification.

Model	Weighing range	Readout	Verification value	Mandatory by law Verification	
				KERN	
KERN MPT 300K100M	[Max] kg 300	[d] kg 0,1	[e] kg 0,1		965-129



NEW

5x



Elegant look combined with large, flat glass weighing plate to make it easier to step on and give maximum safety

Features

- Elegant design
- Sturdy glass weighing plate
- MGD-L: particularly large weighing plate for secure, comfortable standing position
- For easy and hygienic cleaning
- Particularly flat design facilitates access
- Generous weighing range
- Secure and non-slip positioning with rubber feet
- Easy to operate: simply tap on it – stand on it – read the weight
- Integrated AUTO-OFF function to preserve the batteries
- Weight displayed in kg or lb
- **■** Large high-contrast display that is easy to read
- **Note:** The models are only delivered in a set of 5 units. I.e. the price given in the table refers to a delivery of 5 items. Cannot be delivered individually.

Technical data

MGD 100K-1

- LCD display, digit height 40 mm
- Batteries included, 2× CR2032, operating time up to 100 h

MGD 200K1L

- LCD display, digit height 50 mm
- Batterien inklusive, 3× 1,5V AAA, operating time up to 100 h

Accessories

- Cleaning cloths, alcohol-free cloths for wipe disinfectant, quick-acting, on basis of modern quaternary ammonium compounds, and also against papova viruses. Particularly gentle on materials, and therefore very well suited for the disinfection of alcohol sensitive medical products. Fulfill the legal requirements for occupational safety in accordance with TRGS 525/540. Packaging contents 80 pcs., size 20×22 cm per cloth KERN MYC-01

STANDARD



Model	Weighing range	Readout	Weighing plate	Net weight	
	[Max] kg	[d] kg	mm	kg	
KERN					
MGD 100K-1S05	180	0,1	300×300×19	1,5	
MGD 200K-1LS05	250	0,1	380×330×27	2	



Designer personal scale with glass weighing plate

Features

- Elegant design meets precision
- Particularly flat design facilitates access
- For easy and hygienic cleaning
- Secure and non-slip positioning with rubber feet
- Easy to operate – the scale is switched on by a simple foot tap
- Integrated AUTO-OFF function to preserve the batteries
- Weight displayed in kg or lb
- Low overall height for secure footing and space-saving storage
- **1** Large high-contrast display that is easy to read
- **2** Sturdy glass weighing plate

Technical data

- LCD display, digit height 25 mm
- Overall dimensions
W×D×H 290×290×40 mm
- Batteries included, 1× 3V CR2032
operating time up to 100 h
- Net weight approx. 2 kg

Accessories

- Cleaning cloths, alcohol-free cloths for wipe disinfectant, quick-acting, on basis of modern quaternary ammonium compounds, and also against papova viruses. Particularly gentle on materials, and therefore very well suited for the disinfection of alcohol sensitive medical products. Fulfill the legal requirements for occupational safety in accordance with TRGS 525/540. Packaging contents 80 pcs., size 20×22 cm per cloth KERN MYC-01

STANDARD



Model	Weighing range	Readout	
KERN	[Max] kg	[d] kg	
MGB 150K100	150	0,1	



Design body analysis scale to determine body weight, body fat, body fluid, muscle mass, proportion of bone, BMI and metabolic rate/metabolic rate when exercising

Features

- Used to determine body fat, body water, muscle mass with an accuracy of 0.1 % as well as the body weight and bone mass in 0.1 kg increments
- Display showing the calorie requirements for maintaining the current body weight depending on the level of activity and sex
- Elegant design
- Sturdy glass weighing plate with four large contact surfaces for maximum precision
- For easy and hygienic cleaning
- Particularly flat design facilitates access
- Secure and non-slip positioning with rubber feet
- Easy to operate: simply tap on it - stand on it - read the weight
- Memory for up to 10 people (gender, age, height, level of activity)
- Integrated AUTO-OFF function to preserve the batteries
- Weight displayed in kg or lb
- **■** Large high-contrast display that is easy to read
- **Note:** The models are only delivered in a set of 5 units. I.e. the price given in the table refers to a delivery of 5 items. Cannot be delivered individually.

Technical data

- LCD display, digit height 35 mm
- Overall dimensions W×D×H 300×300×25 mm
- Batteries included, 2× CR2032, operating time up to 100 h
- Net weight approx. 2 kg

Accessories

- Cleaning cloths, alcohol-free cloths for wipe disinfectant, quick-acting, on basis of modern quaternary ammonium compounds, and also against papova viruses. Particularly gentle on materials, and therefore very well suited for the disinfection of alcohol sensitive medical products. Fulfill the legal requirements for occupational safety in accordance with TRGS 525/540. Packaging contents 80 pcs., size 20×22 cm per cloth KERN MYC-01

STANDARD				OPTION

Model	Weighing range	Readout	
KERN	[Max] kg	[d] kg	
MFB 150K100S05	182	0,1	

Wheelchair platform scale KERN MWA

Wheelchair platform scale with two integrated access ramps for easy access – with EC type approval class III and approval for professional, stationary medical use in medical diagnostics



KERN MWA 300K-1PM



KERN MWA 300K-1M



Features

- Verification class III (verification is optional)
- Approved as a medical device according to 93/42/EEC
- Especially suitable for weighing patients in wheelchairs, because the low-profile platform can be approached from either side
- The large steel weighing plate also makes it ideal for weighing obese patients
- Level indicator to level the balance precisely
- Hold function:
When patients do not stand or sit completely still, a stable weight is calculated using an average weight and this is then “frozen”. This means that you have sufficient time to attend to the patient first and then take the weight reading in peace
- **MWA 300K-1PM:** This set includes the wheelchair platform scale MWA 300K-1M and the handrail KERN MWA-A01 (including column for ergonomic mounting of the display device), which offers the patient maximum safety when driving or stepping onto the weighing platform
- **1** Both access ramps and the handrail KERN MWA-A01 can be folded up quickly and easily for transportation, for example

- BMI function to determine underweight/normal weight/surplus weight
- **2** 3 balances in one: With the practical optional handrail set **3** KERN MWA-A02, the wheelchair platform scale MWA 300K-1PM can be converted quickly and easily into a multi-function scale. This allows for the patients to be weighed while standing on the scale, with support from the handrail or weighed in a wheelchair
- Battery- or mains-powered, rechargeable battery operation optional

Technical data

- Large backlit LCD display, digit height 25 mm
- Dimensions of display device W×D×H 200×128×55 mm
- Overall dimensions, without handrail, W×D×H 1180×1000×1130 mm
- Cable length of display device approx. 180 cm
- Battery operation possible, 6× 1,5V AA, not included, operating time up to 20 h
- Mains adapter (external) included
- Net weight approx. 76 kg

Accessories

- **3** Handrail, without column, cannot be folded, for self-assembly on the KERN MWA 300K-1M wheelchair platform scale or MWA 300K-1PM, W×D×H approx. 560×40×920 mm. Delivery includes handrail, fasteners, KERN MWA-A02
 - Protective working cover over the display device, standard, can be re-ordered, scope of delivery: 5 items, KERN MBC-A06S05
 - Cleaning cloths, alcohol-free cloths for wipe disinfectant. Fulfill the legal requirements for occupational safety in accordance with TRGS 525/540. Packaging contents 80 pcs., size 20×22 cm per cloth, KERN MYC-01
 - Internal rechargeable battery pack, operating time up to 40 h, without backlight, charging time approx. 12 h, KERN MBC-A08
 - Interface cable RS-232C to connect an external device, KERN CFS-A01
 - Matrix needle printer, KERN YKN-01
 - Label printer, KERN YKE-01
 - Thermal printer, KERN YKB-01N
- For more details see the internet

STANDARD						OPTION	FACTORY
RS 232	MOVE	IP 65	BATT	MULTI	2 DAYS	ACCU	M +3 DAYS

* Within the EU, official verification is mandatory by law for scales that are intended for use as a medical device. Please add this to your order. We require the location of use and the post code for the verification.

Model	Weighing range [Max] kg	Readout [d] kg	Verification value [e] kg	Weighing surface mm	Mandatory by law Verification	
						KERN
MWA 300K-1M	300	0,1	0,1	880×840	965-129	
MWA 300K-1PM	300	0,1	0,1	880×840	965-129	

Wheelchair platform scale KERN MWB

Compact wheelchair platform scale with two integrated access ramps for easy access



NEW



Features

- Especially suitable for weighing patients in wheelchairs, because the low-profile platform can be approached from either side
- The large steel weighing plate also makes it ideal for weighing obese patients
- Secure and non-slip positioning with height-adjustable rubber feet
- **1** Level indicator to level the balance precisely
- Hold function:
When patients do not stand or sit completely still, a stable weight is calculated using an average weight and this is then “frozen”. This means that you have sufficient time to attend to the patient first and then take the weight reading in peace
- BMI function to determine underweight/normal weight/surplus weight
- Wall mount for the display device
- **2** The scale can be easily transported using the two handles and two rollers and does not require much storage space

Technical data

- Large backlit LCD display, digit height 25 mm
- Dimensions of display device W×D×H 200×130×60 mm
- Overall dimensions, W×D×H 1050×1050×100 mm
- Batteries included, 6×1,5V AA, operating time up to 40 h
- Cable length of display device approx. 300 cm
- Net weight approx. 55 kg

Accessories

- Protective working cover over the display device, standard, can be re-ordered, scope of delivery: 5 items, KERN MBC-A06S05
- Cleaning cloths, alcohol-free cloths for wipe disinfectant. Fulfill the legal requirements for occupational safety in accordance with TRGS 525/540. Packaging contents 80 pcs., size 20×22 cm per cloth, KERN MYC-01
- For more details see the internet

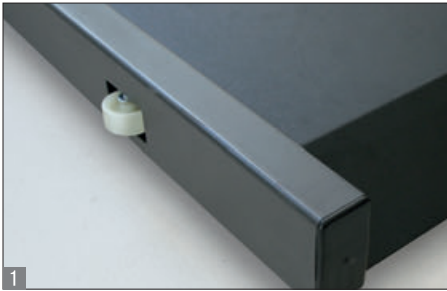
STANDARD

Model	Weighing range	Readout	Weighing surface
KERN	[Max] kg	[d] kg	mm
MWB 300K-1	300	0,1	800×800

Wheelchair platform scale KERN MWS

Wheelchair platform scale with low overall height for easy access – with EC type approval class III and approval for professional, mobile medical use in medical diagnostics





Features

- Verification class III (verification is optional)
- Approved as a medical device according to 93/42/EEC
- Especially suitable for weighing patients in wheelchairs, because the low-profile platform can be approached from either side and it has a memory function for tare weights for up to five (power) wheelchairs
- The large steel weighing plate also makes it ideal for weighing obese patients
- Secure and non-slip positioning with height-adjustable rubber feet
- Level indicator to level the balance precisely
- Hold function:
When patients do not stand or sit completely still, a stable weight is calculated using an average weight and this is then “frozen”. This means that you have sufficient time to attend to the patient first and then take the weight reading in peace
- BMI function to determine underweight/normal weight/surplus weight
- **1** The scale can be easily transported using 2 rollers and a handle and does not require much storage space
- **2** Display device with two magnets on the back, ideal to fix it to metallic surfaces, e.g. to the weighing plate during transportation

- **3** Three balances in one: With the practical KERN MWS-A02 handrail set, the wheelchair platform scale MWS 300K100M can be converted quickly and easily into a multi-function scale. In this way patients can be weighed standing up on their own, using the support of the handrail or in a wheelchair. For a more ergonomic system the display device can be fitted directly onto the handrail
- Battery- or mains-powered, rechargeable battery operation optional

Technical data

- LCD display, digit height 25 mm
- Dimensions of display device WxDxH 210x110x50 mm
- Overall dimensions MWS 300K100M WxDxH 1155x800x66 mm MWS 400K100DM WxDxH 1255x1060x69 mm
- Overall dimensions incl. MWS-A02 WxDxH 1155x820x1070 mm
- Battery operation possible, 6x 1,5V AA, not included, operating time up to 50 h
- Mains adapter (external) included
- Cable length of display device approx. 180 cm
- Net weight approx. 28,4 kg

Accessories

- **3** Handrail set to fit to the wheelchair platform scale KERN MWS 300K100M, WxDxH approx. 1150x60x900 mm. Scope of delivery: two handrails, a stability bar, fasteners. KERN MWS-A02
 - **4** Stand to elevate display device, height of stand approx. 950 mm, KERN MWS-A01
 - Protective working cover over the display device, standard, can be re-ordered, scope of delivery: 5 items, KERN EOB-A02S05
 - Cleaning cloths, alcohol-free cloths for wipe disinfectant. Fulfill the legal requirements for occupational safety in accordance with TRGS 525/540. Packaging contents 80 pcs., size 20x22 cm per cloth, KERN MYC-01
 - Internal rechargeable battery pack, operating time up to 50 h, charging time approx. 24 h, KERN FOB-A08
 - Interface cable RS-232C to connect an external device, KERN MPS-A08
 - Matrix needle printer, KERN YKN-01
 - Label printer, KERN YKE-01
 - Thermal printer, KERN YKB-01N
- For more details see the internet

STANDARD					OPTION		FACTORY	
								*
RS 232	MOVE	BATT	MULTI	2 DAYS	ACCU	M	+3 DAYS	

* Within the EU, official verification is mandatory by law for scales that are intended for use as a medical device. Please add this to your order. We require the location of use and the post code for the verification.

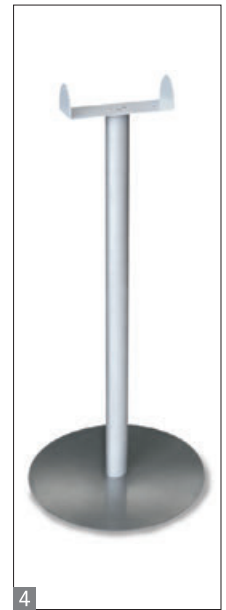
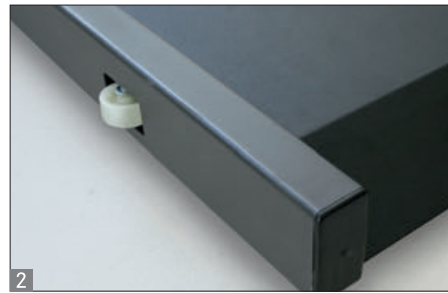
Model	Weighing range [Max] kg	Readout [d] kg	Verification value [e] kg	Weighing surface mm		Mandatory by law Verification	
							KERN
MWS 300K100M	300	0,1	0,1	900x740		965-129	
MWS 400K100DM	300 400	0,1 0,2	0,1 0,2	1000x1000		965-130	



Stretcher scale KERN MWS-L

Stretcher scale with a low overall height for easy access – with EC type approval class III and approval for medical use





Features

- Verification class III (verification is optional)
- Approved as a medical device according to 93/42/EEC
- **1** Due to its large dimensions and large weighing range, it is especially suitable for weighing immobile patients on stretchers or wheelchairs as well as obese patients
- Large steel weighing plate with non-slip and wear-resistant surface
- Secure and non-slip positioning with height-adjustable rubber feet
- Level indicator to level the balance precisely
- Hold function:
When patients do not stand, sit or lie completely still, a stable weight is calculated using an average weight and this is then “frozen”. This means that you have sufficient time to attend to the patient first and then take the weight reading in peace
- BMI function to determine underweight/normal weight/surplus weight
- **2** The scale can be easily transported using 2 rollers and 2 handles and does not require much storage space

- **3** Display device with two magnets on the back, ideal to fix it to metallic surfaces, e.g. to the weighing plate during transportation
- Battery- or mains-powered, rechargeable battery operation optional

Technical data

- LCD display, digit height 25 mm
- Dimensions of display device W×D×H 210×110×50 mm
- Overall dimensions W×D×H 1500×860×68 mm
- Battery operation possible, 6× 1,5V AA, not included, operating time up to 50 h
- Mains adapter (external) included
- Cable length of display device approx. 180 cm
- Net weight approx. 40 kg

Accessories

- **4** Stand to elevate display device, height of stand approx. 950 mm, KERN MWS-A01
 - Protective working cover over the display device, standard, can be re-ordered, scope of delivery: 5 items, KERN EOB-A02S05
 - Cleaning cloths, alcohol-free cloths for wipe disinfectant, quick-acting, on basis of modern quaternary ammonium compounds, and also against papova viruses. Particularly gentle on materials, and therefore very well suited for the disinfection of alcohol sensitive medical products. Fulfill the legal requirements for occupational safety in accordance with TRGS 525/540. Packaging contents 80 pcs., size 20×22 cm per cloth KERN MYC-01
 - Rechargeable battery pack internal, operating time up to 45 h, charging time approx. 14 h, KERN FOB-A08
 - Interface cable RS-232C to connect an external device, KERN MPS-A08
 - Matrix needle printer, KERN YKN-01
 - Label printer, KERN YKE-01
 - Thermal printer, KERN YKB-01N
- For more details see the internet

STANDARD OPTION FACTORY

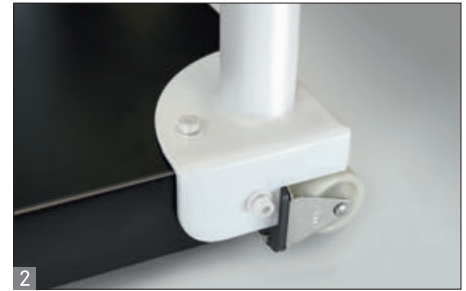
* Within the EU, official verification is mandatory by law for scales that are intended for use as a medical device. Please add this to your order. We require the location of use and the post code for the verification.

Model	Weighing range	Readout	Verification value	Weighing surface	Mandatory by law Verification	
					KERN	
KERN	[Max] kg	[d] kg	[e] kg	mm		
MWS 300K-1LM	300	0,1	0,1	1200×800		965-129



Affordable handrail scale for a secure feeling during weighing – with EC type approval class III and approval for professional medical use in medical diagnostics





Features

- Verification class III (verification is optional)
- Approved as a medical device according to 93/42/EEC
- Ideal for care homes, centres for geriatric medicine, internal medicine and much more
- The sturdy support structure helps fragile and weak patients to stand safely and, at the same time, allows for a precise determination of the patients' weight
- Large platform with non-slip and wear-resistant surface for a secure footing
- Low platform height facilitates access
- Hold function:
When patients do not stand or sit completely still, a stable weight is calculated using an average weight and this is then "frozen". This means that you have sufficient time to attend to the patient first and then take the weight reading in peace
- BMI function to determine underweight/normal weight/surplus weight
- Ergonomic display device with large keys and a high-contrast LCD display for easy entry and reading of patient data or the height for calculating the BMI

- 2 Two wheels for easy transportation of the scale
- Battery- or mains-powered, rechargeable battery operation optional

Technical data

- LCD display, digit height 25 mm
- Dimensions of weighing plate W×D×H 550×550×62 mm
- Dimensions of display device W×D×H 210×110×50 mm
- Overall dimensions W×D×H 550×550×1100 mm
- Battery operation possible, 6× 1,5V AA, not included, operating time up to 70 h
- Mains adapter (external) included
- Net weight approx. 20 kg

Accessories

- 3 Mechanical height rod, measuring range 60–205 cm, can be screwed onto the column or wall-mounted, approved as a medical device according to 93/42/EEC, KERN MSF 200
 - Protective working cover over the display device, standard, can be re-ordered, scope of delivery: 5 items, KERN EOB-A02S05
 - Cleaning cloths, alcohol-free cloths for wipe disinfectant, quick-acting, on basis of modern quaternary ammonium compounds, and also against papova viruses. Particularly gentle on materials, and therefore very well suited for the disinfection of alcohol sensitive medical products. Fulfill the legal requirements for occupational safety in accordance with TRGS 525/540. Packaging contents 80 pcs., size 20×22 cm per cloth KERN MYC-01
 - Internal rechargeable battery pack, operating time up to 50 h, charging time approx. 24 h, KERN FOB-A08
 - Interface cable RS-232C to connect an external device, KERN MPS-A08
 - Matrix needle printer, KERN YKN-01
 - Label printer, KERN YKE-01
 - Thermal printer, KERN YKB-01N
- For more details see the internet

STANDARD					OPTION		FACTORY	
								*
RS 232	MOVE	BATT	MULTI	1 DAY	ACCU	M +3 DAYS		

* Within the EU, official verification is mandatory by law for scales that are intended for use as a medical device. Please add this to your order. We require the location of use and the post code for the verification.

Model	Weighing range	Readout	Verification value	Mandatory by law Verification	
					KERN
KERN	[Max] kg	[d] kg	[e] kg		
MTS 300K100M	300	0,1	0,1		965-129



Sturdy handrail scale for a secure feeling during weighing – with EC type approval class III and approval for professional medical use in medical diagnostics





Features

- Verification class III (verification is optional)
- Approved as a medical device according to 93/42/EEC
- Ideal for care homes, centres for geriatric medicine, internal medicine and much more
- 1 The sturdy support structure helps fragile and weak patients to stand safely and, at the same time, allows for a precise determination of the patients' weight
- Large surface, for the patient to have the most secure footing, hygienic and easy to clean
- Particularly easy access to the platform through its low height of just 30 mm
- Level indicator to level the balance precisely
- Hold function:
When patients do not stand or sit completely still, a stable weight is calculated using an average weight and this is then "frozen". This means that you have sufficient time to attend to the patient first and then take the weight reading in peace
- 2 Practical second display on the back of the balance, which makes it easy for both the patient and the doctor or nursing staff to read the weight

- BMI function to determine underweight/normal weight/surplus weight
- Ergonomic display device with large keys and a high-contrast LCD display for easy entry and reading of patient data or the height for calculating the BMI
- Battery- or mains-powered, rechargeable battery operation optional

Technical data

- Large backlit LCD display, digit height 25 mm
- Dimensions of weighing plate
W×D×H 780×680×68 mm
- Dimensions of weighing surface
W×D 600×600 mm
- Dimensions of display device
W×D×H 200×128×55 mm
- Overall dimensions
W×D×H 780×680×1100 mm
- Battery operation possible, 6× 1,5V AA, not included, operating time up to 50 h
- Mains adapter (external) included
- Net weight approx. 40 kg

Accessories

- Protective working cover over the display device, standard, can be re-ordered, scope of delivery: 5 items, KERN MPE-A01S05
 - Cleaning cloths, alcohol-free cloths for wipe disinfectant, quick-acting, on basis of modern quaternary ammonium compounds, and also against papova viruses. Particularly gentle on materials, and therefore very well suited for the disinfection of alcohol sensitive medical products. Fulfill the legal requirements for occupational safety in accordance with TRGS 525/540. Packaging contents 80 pcs., size 20×22 cm per cloth KERN MYC-01
 - Rechargeable battery pack internal, operating time up to 40 h without backlight, charging time approx. 12 h, KERN MBC-A08
 - Interface cable RS-232C to connect an external device, KERN CFS-A01
 - Matrix needle printer, KERN YKN-01
 - Label printer, KERN YKE-01
 - Thermal printer, KERN YKB-01N
- For more details see the internet

STANDARD



OPTION



FACTORY



* Within the EU, official verification is mandatory by law for scales that are intended for use as a medical device. Please add this to your order. We require the location of use and the post code for the verification.

Model	Weighing range	Readout	Verification value	Mandatory by law Verification	
				M KERN	
KERN MTA 400K-1M	[Max] kg 300 400	[d] kg 0,1 0,2	[e] kg 0,1 0,2	965-130	

Mobile chair scale with four wheels – with EC type approval class III and approval for professional medical use in medical diagnostics





Features

- Verification class III (verification is optional)
- Approved as a medical device according to 93/42/EEC
- **1** Mobile version with locking brakes on all wheels
- With its four wheels, this chair scale provides maximum mobility in bringing the scale to the patient. This ensures more efficient use of time for the clinic staff and greater safety for the patients, who can be weighed in their familiar environment
- The four steerable rollers, with their large diameter, make it easier to get over door thresholds, edges and across the gaps into elevators
- This chair scale is the ideal measuring instrument for retirement homes, rehabilitation centres and clinics with lots of patients, and can handle weighing overweight persons weighing up to 300 kg
- For fragile patients, the comfortable, ergonomically optimised seat offers secure support during weighing
- **2** Two foldable armrests and footrests make transfers into the chair easier. Ideal for overweight patients or barrier-free use, e.g. for transfers from a bed to the scale

- Hold function:
When patients do not sit completely still, a stable weight is calculated using an average weight and this is then “frozen”. This means that you have sufficient time to attend to the patient first and then take the weight reading in peace
- BMI function to determine underweight/normal weight/surplus weight
- High resolution readout: Readout [d] for 5 sec. increased by one decimal place at the touch of a key

Technical data

- **3** LCD display, digit height 25 mm
- Dimensions of display device W×D×H 210×110×50 mm
- Overall dimensions W×D×H 647×860×910 mm
- Mains adapter (external) included
- Battery operation possible, 6× 1,5V AA, not included, operating time up to 70 h
- Net weight approx. 22 kg

Accessories

- **4** Practical mains adapter pouch to store the mains adapter which is supplied as standard. Fitting option using two Velcro fasteners, KERN MCB-A05
 - Protective working cover over the display device, standard, can be re-ordered, scope of delivery: 5 items, KERN EOB-A02S05
 - Cleaning cloths, alcohol-free cloths for wipe disinfectant. Fulfill the legal requirements for occupational safety in accordance with TRGS 525/540. Packaging contents 80 pcs., size 20×22 cm per cloth, KERN MYC-01
 - Internal rechargeable battery pack, operating time up to 50 h, charging time approx. 24 h, KERN FOB-A08
 - Interface cable RS-232C to connect an external device, KERN MPS-A08
 - Matrix needle printer, KERN YKN-01
 - Label printer, KERN YKE-01
 - Thermal printer, KERN YKB-01N
- For more details see the internet

STANDARD					OPTION		FACTORY	
RS 232	MOVE	BATT	MULTI	2 DAYS	ACCU	M +3 DAYS*		

* Within the EU, official verification is mandatory by law for scales that are intended for use as a medical device. Please add this to your order. We require the location of use and the post code for the verification.

Model	Weighing range	Readout	Verification value	Mandatory by law Verification	
					KERN
KERN	[Max] kg	[d] kg	[e] kg		
MCB 300K100M	300	0,1	0,1		965-129

Ergonomically optimised chair scale – with EC type approval class III and approval for professional medical use in medical diagnostics





Features

- Verification class III (verification is optional)
- Approved as a medical device according to 93/42/EEC
- This chair scale is the ideal measuring instrument for retirement homes, rehabilitation centres and clinics with lots of patients, and can handle weighing overweight persons weighing up to 250 kg
- **1** Mobile version with 2 steerable rollers and particularly convenient locking brakes at the rear
- With its four wheels, this chair scale provides maximum mobility in bringing the scale to the patient. This ensures more efficient use of time for the clinic staff and greater safety for the patients, who can be weighed in their familiar environment
- The rollers, with their large diameter, make it easier to get over door thresholds, edges and across the gaps into elevators
- For fragile patients, the comfortable, ergonomically optimised seat offers secure support during weighing

- Because of the clearly contrasting black colour of the seating surface, footrests and armrests ideally suited for use with dementia patients
- **2** Two foldable armrests and footrests make transfers into the chair easier. Ideal for overweight patients or barrier-free use, e.g. for transfers from a bed to the scale
- Ergonomically positioned carrying handles
- Hold function:
When patients do not sit completely still, a stable weight is calculated using an average weight and this is then "frozen". This means that you have sufficient time to attend to the patient first and then take the weight reading in peace
- BMI function to determine underweight/normal weight/surplus weight
- High resolution readout: Readout [d] for 5 sec. increased by one decimal place at the touch of a key

Technical data

- **3** Large backlit LCD display with digit height 25 mm
- Dimensions of display device W×D×H 200×130×60 mm
- Overall dimensions W×D×H 625×990×985 mm
- Rechargeable battery pack internal, standard, operating time up to 40 h without backlight, charging time approx. 12 h
- Battery operation possible, 6× 1,5V AA, not included, operating time up to 20 h
- Net weight approx. 24 kg

Accessories

- **4** Practical mains adapter pouch to store the mains adapter which is supplied as standard. Fitting option using two Velcro fasteners, KERN MCC-A01
- Protective working cover over the display device, standard, can be re-ordered, scope of delivery: 5 items, KERN MBC-A06S05
- Cleaning cloths, alcohol-free cloths for wipe disinfectant. Fulfill the legal requirements for occupational safety in accordance with TRGS 525/540. Packaging contents 80 pcs., size 20×22 cm per cloth, KERN MYC-01



* Within the EU, official verification is mandatory by law for scales that are intended for use as a medical device. Please add this to your order. We require the location of use and the post code for the verification.

Model	Weighing range	Readout	Verification value	Mandatory by law Verification	
				MCC	KERN
KERN	[Max] kg	[d] kg	[e] kg		
MCC 250K100M	250	0,1	0,1	965-129	

Mobile chair scale in ergonomically-optimised design for safe, convenient weighing



NEW





Features

- This chair scale is the ideal measuring instrument for elderly care and for paramedics, and can handle weighing overweight persons weighing more than 300 kg
- **1** Mobile version with 4 rollers and particularly convenient locking brakes on both rear wheels
- With its four wheels, this chair scale provides maximum mobility in bringing the scale to the patient. This ensures more efficient use of time for the staff and greater safety for the patients, who can be weighed in their familiar environment
- The rollers, with their large diameter, make it easier to get over door thresholds, edges and across the gaps into elevators
- For fragile patients, the comfortable, ergonomically optimised seat offers secure support during weighing
- Because of the clearly contrasting black colour of the seating surface and footrests ideally suited for use with dementia patients

- **2** Two foldable armrests and footrests make transfers into the chair easier. Ideal for overweight patients or barrier-free use, e.g. for transfers from a bed to the scale
- Ergonomically positioned carrying handles
- Hold function:
When patients do not sit completely still, a stable weight is calculated using an average weight and this is then “frozen”. This means that you have sufficient time to attend to the patient first and then take the weight reading in peace
- BMI function to determine underweight/normal weight/surplus weight
- Practical battery operation using standard batteries ensures a high level of flexibility and freedom from mains adapters, sockets, chargers, etc.
- High resolution readout: Read-out [d] for 5 sec increased by one decimal place at the touch of a key

Technical data

- **3** LCD display, digit height 25 mm
- Dimensions of display device W×D×H 200×130×60 mm
- Overall dimensions W×D×H 625×990×985 mm
- Batteries included, 6×1,5V AA, operating time up to 20 h
- Net weight approx. 20 kg

Accessories

- Protective working cover over the display device, standard, can be re-ordered, scope of delivery: 5 items, KERN MBC-A06S05
- Practical mains adapter pouch on the back of the chair as well as mains adapter (external), KERN MCC-A01
- Cleaning cloths, alcohol-free cloths for wipe disinfectant. Fulfill the legal requirements for occupational safety in accordance with TRGS 525/540. Packaging contents 80 pcs., size 20×22 cm per cloth, KERN MYC-01

STANDARD



Model	Weighing range	Readout	
KERN	[Max] kg	[d] kg	
MCD 300K-1	300	0,1	



Stainless steel drive-through scale with two integrated access ramps and EC type approval [M]

Features

- Robust stainless steel drive-through scale for rapid weighing of e.g. laundry carts, container trolleys, roller containers, etc. Ideal for hospital laundry services, goods inwards, hospital kitchens, etc.
- Low platform height and integrated access ramps on both sides facilitate access. No need for pit frame installation – which saves money
- Weighing bridge stainless steel, extremely resistant to bending
- **1** 4 load cells steel, encapsulated. Protection against dust and water splashes IP68, suitable for continuous use in wet areas
- **2** Stainless steel display device with protection against dust and water splashes IP65
- Superior display size: digit height 52 mm. Bright backlight for easy reading of weight, even in poor lighting conditions
- For easy and hygienic cleaning
- Suitable for the ever-increasing hygienic requirements in the medical environment
- Totalising of weights and piece counts

Technical data

- Large backlit LCD display, digit height 52 mm
- Overall dimensions W×D×H 1600×1200×78 mm
- Weighing surface, without access ramps W×D 1000×1000 mm
- Dimensions of display device W×D×H 266×165×96 mm
- Cable length of display device approx. 5 m
- Net weight approx. 131 kg
- Permissible ambient temperature -10 °C/40 °C

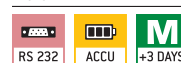
Accessories

- Rechargeable battery pack internal, operating time up to 35 h without backlight, charging time approx. 10 h, must be ordered at purchase, KERN GAB-A04
 - **3** Stand to elevate display device, stainless steel, height-adjustable, height of stand 750–1000 mm, KERN BFN-A04
 - Pair of base plates to fix the weighing bridge to the floor, KERN BFN-A03
 - Large display with superior display size, please refer to KERN's website for more details. KERN YKD-A02
 - Cable with special length 15 m, between display device and platform, must be ordered at purchase, KERN BFB-A03
 - Data interface RS-232, interface cable included, approx. 1.5 m, must be ordered at purchase, KERN KFN-A01
 - Matrix needle printer, KERN YKN-01
 - Label printer, KERN YKE-01
 - Thermal printer, KERN YKB-01N
- For more details see the internet

STANDARD



FACTORY



Model	Weighing range [Max] kg	Readout [d] g	Verification value [e] g	Minimum load [Min] g	Mandatory by law Verification	
					M III KERN	
NFN 600K-1M	600	200	200	4000	965-230	
NFN 1.5T-4M	1500	500	500	10000	965-230	



Organ scale stainless steel and IP68 protected – now with improved accuracy

Features

- Particularly suitable to determine the specific weight of organs, tissues, etc, in Pathology or in the laboratory
- Tough industry standard suitable for use in harsh industrial applications
- IP68 protection: very high class of protection against dust and water. Making it very robust and durable. Ideal for harsh ambient conditions. Submersion in water actually possible
- Stainless steel housing, rust-proof and easy to clean
- Very fast display: steady weight values within 2 sec
- High mobility: Battery operation, compact construction and low weight make this balance ideal for use in several locations
- Carrying grips on the underside of the scale for easy transportation

Technical data

- Large LCD display, digit height 25 mm
- Dimensions of weighing plate stainless steel WxD 236x195 mm
- Overall dimensions WxDxH 240x280x120 mm
- Ready for use: Batteries included, 4x 1,5V AUTO-OFF function to preserve the batteries, can be switched off
- Net weight approx. 3,16 kg
- Permissible ambient temperature 0 °C/40 °C

Accessories

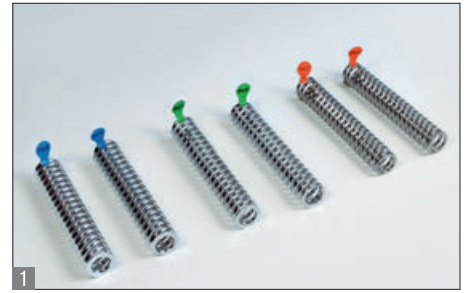
- Tare pan made of stainless steel, ideal for weighing organs, tissues, etc. WxDxH 370x240x20 mm, KERN RFS-A02

STANDARD



Model	Weighing range		Readout	
	[Max]	kg	[d]	g
KERN				
FXN 3K-4N	3		0,5	
FXN 6K-3N	6		1	
FXN 10K-3N	15		2	
FXN 30K-3N	30		5	

Price reduction



Hand grip dynamometer, e.g. for rehabilitation treatment after accidents

Features

- Especially suitable for use in rehabilitation centres for determining manual clamping force
- There are four measuring methods, which for example, as part of a rehabilitation program, help the medical staff to monitor the fitness of the patient's hands and carry out controlled training:
 - Real time mode: immediately shows the client's current strength
 - Peak/Max mode: shows the maximum strength of a client's grip
 - Average mode: Calculates the average strength from two grips
 - Counting mode: Counts the number of presses which exceed a previously defined strength limit
- Designed to reveal reduced hand strength and the risk of morbidity which results from this, for aging people or to expose malnutrition, for example, during chemotherapy or similar treatments
- Safe, comfortable use thanks to non-slip rubber grips
- Integrated AUTO-OFF function after 1 minute to preserve the batteries
- Result displayed in kg or lb
- MAP 80K1S: Special version for children: The small handle depth allows children in particular to easily and ergonomically grip the handles
- MAP 130K1: Special version for body builders: Its design and extended measuring range mean that it offers additional capacity, which can accommodate the higher fundamental force exerted by body builders
- **1** Exchangeable springs facilitate fast switching of the capacity (additional spring sets are included with delivery). The varying rigidity of the individual springs makes the hand grip dynamometer ideal for a wide variety of patient groups, e.g. children or senior citizens or in sports medicine
- **2** Stable case for safe, easy transport and for storage of the additional spring sets, standard, W×D×H 350×265×85 mm

Technical data

- LCD display, digit height 12 mm
- Batteries included, 1×CR2450, operating time up to 53 h
- Net weight approx. 0.3 kg

STANDARD

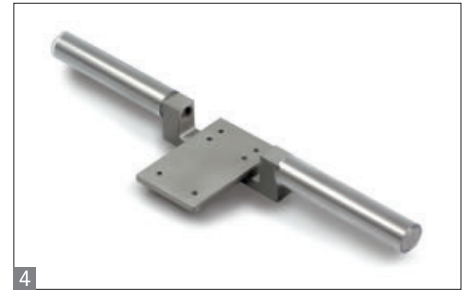


Model	Measuring range [Max] kg	Readout [d] kg	Spring sets kg	Overall dimensions W×D×H mm		Option	
						ISO KERN	Calibr. Certificate
KERN							
MAP 80K1S	80	0,1	10, 20, 40, 80	55×88×212	↓	961-167	
MAP 80K1	80	0,1	20, 40, 80	55×102×212		961-167	
MAP 130K1	130	0,1	40, 80, 130	55×102×212		961-167	

↓ Price reduction



See images for dynamometers with optional accessories AC45-47



Force measurement for medical applications

Features

- Determining muscle function and force is used within many areas of medical diagnostics. Amongst others, in
 - orthopaedics for determining the function of the musculoskeletal system
 - physiotherapy for restoring motivity
 - occupational therapy for treating physical damage
- Within sport, too, measuring muscular force development can be used alongside training
- These measurements can be supported by the SAUTER FK (alternatively SAUTER FH) force gauge when connected with the three physio sensors (AC 45, AC 46, AC 47) as shown
- These sensors to measure muscular strength have been designed in an ergonomic manner. The surface is made of soft foam rubber, which sits comfortably against the skin
- Connecting the precision measuring device with the optional stainless steel handles SAUTER AFK 02 | AFH 04 or the support AFH 21 means that you can obtain reliable weighing results
- Our recommendation: Combine the force measuring device (Sauter FK or FH) with the stainless steel handles (Sauter AFK 02 or AFH 04, depending on the force measuring device selected) or the support (SAUTER AFH 21) and one or more physio sensors (AC 45, AC 46, AC 47)
- All components can be ordered individually

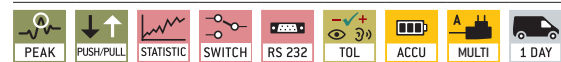
Accessories

- **1** AC 45: Concave force sensor with optimised radius for measurement, particularly of arms and legs, up to 1kN, SAUTER AC 45
- **2** AC 46: Flat square-shaped sensor for lateral power sensing of back, chest or arm, up to 1kN, SAUTER AC 46
- **3** AC 47: Round sensor to measure particular muscle groups, such as, for example, the shoulder, up to 1kN, SAUTER AC 47
- **4** Stainless steel handle with plastic coating for force measuring devices
SAUTER FK: AFK 02
SAUTER FH: AFH 04
- **5** Support for medical muscular strength measurement, suitable for dynamometers SAUTER FK, FH, SAUTER AFH 21

STANDARD FK



STANDARD FH



OPTION FH



Model	Measuring range [Max] N	Readout [d] N	
SAUTER			
FK 50.	50	0,02	
FK 100.	100	0,05	
FK 250.	250	0,1	
FK 500.	500	0,2	
FK 1K.	1000	0,5	
AFH 21 can either be combined with FK or FH			
FH 50.	50	0,01	
FH 100.	100	0,05	
FH 200.	200	0,1	
FH 500.	500	0,1	

Model	Description	
SAUTER		
4 AFK 02	Stainless steel handle bar with rubber grip	
5 AFH 21	Support	
4 AFH 04	Stainless steel handle bar with rubber grip	

Model	Description	
SAUTER		
AC 45	Concave force sensor with optimised radius for measurement, particularly of arms and legs	
AC 46	Flat square-shaped sensor for lateral power sensing e.g. of back, chest or arm	
AC 47	Round sensor to measure particular muscle groups, such as, for example, the shoulder	



The fully equipped all-round compound microscope for schools, training and laboratories

Features

- The KERN OBE series is a range of high-quality, fully-equipped compound microscopes, which can't be beaten in terms of ease of use and ergonomic design.
- The strong and continuously dimmable 3 W LED guarantees optimum illumination of the samples and also ensures long service life. Mobile use of several models is also no problem through the use of rechargeable batteries.
- The height-adjustable and thereby focusable 1,25 Abbe condenser with aperture diaphragm is a further quality feature of the OBE series and ensures the very best concentration of light.
- Height adjustment of the fully-equipped mechanical stage is carried out using a coarse and fine focusing knob on both sides. The ergonomically designed coaxial drive enables you to work with the samples and move them rapidly.
- A large selection of different eyepieces and 3 objectives, a simple 4 polarising unit and a 5 darkfield kit are available to you as accessories.
- A protective dust cover, eye cups, as well as multi-lingual user instructions are included in the scope of the delivery.
- A C-mount adapter is required to connect a camera to the trinocular version. You can select this adapter from the following model outfit list.

Please refer to the website for further details as well as information on the full range of model features

Scope of application

- Training, haematology, sediment investigation, doctor's practise.

Applications/Samples

- Translucent, thin, high-contrast, less complex samples (e.g. plant tissue, coloured cells/parasites)

Technical data

- Finite optical system (DIN)
- Quadplex nosepiece
- Siedentopf 30° inclined/360° rotatable
- Diopter adjustment: One-sided (for binocular and trinocular models)
- Overall dimensions W×D×H 320×180×365 mm
- Net weight approx. 5,5 kg

STANDARD



OPTION



OBE 103, OBE 113

Model	Standard configuration					
	Tube	Eyepiece	Objective quality	Objectives	Illumination	
KERN						
OBE 101	Monocular	HWF 10×/ø 18 mm	Achromatic	4×/10×/40×	3 W LED (transmitted)	↓
OBE 102	Binocular	HWF 10×/ø 18 mm	Achromatic		3 W LED (transmitted)	↓
OBE 103	Binocular	HWF 10×/ø 18 mm	Achromatic		3 W LED (transmitted) (battery incl., rechargeable)	↓
OBE 104	Trinocular	HWF 10×/ø 18 mm	Achromatic		3 W LED (transmitted)	↓
OBE 111	Monocular 2	HWF 10×/ø 18 mm	Achromatic	4×/10×/40×/100×	3 W LED (transmitted)	
OBE 112	Binocular	HWF 10×/ø 18 mm	Achromatic		3 W LED (transmitted)	↓
OBE 113	Binocular	HWF 10×/ø 18 mm	Achromatic		3 W LED (transmitted) (battery incl., rechargeable)	↓
OBE 114	Trinocular 1	HWF 10×/ø 18 mm	Achromatic		3 W LED (transmitted)	↓



Also available as a digital, trinocular or phase contrast model



The high-performance compound microscope for every laboratory, hospitals and doctor's practises with fixed, pre-centred Koehler illumination

Features

- The KERN OBF-1 and OBL-1 models are excellent, stable laboratory microscopes for all common routine applications.
- Depending on the application, there is a choice of models with strong, continuously dimmable 3 W LED or 20 W halogen illumination (Philips).
- **1** Trinocular models as well as specially pre-configured phase contrast models available, please feel free to contact us
- The fixed, pre-centred and focusable 1,25 Abbe condenser with aperture diaphragm and field diaphragm gives you a simplified Koehler illumination, without having to move the centre.
- The large mechanical stage and its specimen holder holds up to two samples at the same time and is quick and easy to focus using a coaxial coarse and fine focusing knob on both sides.
- A large selection of eyepieces, **2** objectives and colour filters as well as a darkfield condenser, a simple **3** polarising unit, different **4** phase contrast kits through to HBO and LED fluorescence units are available to you as accessories.
- A protective dust cover, eye cups, as well as multi-lingual user instructions are included in the scope of delivery.
- A C-mount adapter is required to connect a camera to the trinocular version. You can select this adapter from the following model outfit list.

Please refer to the website for further details as well as information on the full range of model features

Scope of application

- Haematology, urology, gynaecology, dermatology, pathology, microbiology and parasitology, immunology, oncology, entomology, vets, water analysis and breweries

Applications/Samples

- Translucent, thin, low-contrast, challenging samples (e.g. living mammal cells, bacteria, tissue)

Technical data

- Finite optical system DIN (OBF)/ Infinity optical system (OBL)
- Quadplex nosepiece
- Siedentopf 30° inclined/360° rotatable
- Diopter adjustment: One-sided
- Overall dimensions W×D×H 395×200×380 mm
- Net weight approx. 6,7 kg

STANDARD



OPTION



Model	Standard configuration					
	Tube	Eyepiece	Objective quality	Objectives	Illumination	
OBF 121	Binocular	HWF 10×/ø 18 mm	Achromatic	4×/10×/ 40×/100×	6 V/20 W Halogen (transmitted)	↓
OBF 122	Binocular	HWF 10×/ø 18 mm	Plan		6 V/20 W Halogen (transmitted)	↓
OBF 123	Binocular	HWF 10×/ø 18 mm	Plan		3 W LED (transmitted)	↓
OBF 131	Trinocular	HWF 10×/ø 18 mm	Achromatic		6 V/20 W Halogen (transmitted)	↓
OBF 132	Trinocular	HWF 10×/ø 18 mm	Plan		6 V/20 W Halogen (transmitted)	↓
OBF 133	Trinocular	HWF 10×/ø 18 mm	Plan		3 W LED (transmitted)	↓
OBL 125	Binocular	HWF 10×/ø 20 mm	Infinity E-Plan		6 V/20 W Halogen (transmitted)	↓
OBL 127	Binocular	HWF 10×/ø 20 mm	Infinity E-Plan		3 W LED (transmitted)	↓
OBL 135	Trinocular	HWF 10×/ø 20 mm	Infinity E-Plan		6 V/20 W Halogen (transmitted)	↓
OBL 137	Trinocular	HWF 10×/ø 20 mm	Infinity E-Plan		3 W LED (transmitted)	↓

↓ Price reduction



Also available as a phase contrast and fluorescence model



Professionalism and versatility united in one microscope – with Köhler illumination for demanding applications

Features

- The OBN series stands out because of its unbeatable and consistently high quality and its ergonomic design. The range of modular components means that the OBN series can be individually customised for the professional user.
- Depending on the application, there is a choice of models with strong, continuously dimmable 3 W LED or 20 W halogen transmitted illumination (Philips).
- **1** This series has a professional Koehler illumination unit with an adjustable field diaphragm as well as a height-adjustable 1,25 Abbe condenser which can be centred and which has an adjustable aperture diaphragm.
- The extremely large mechanical stage with ergonomic, coaxial coarse and fine focusing knob on both sides enables you to adjust and focus your sample rapidly and accurately.
- A wide variety of modular systems, such as, for example, a swing-out condenser, various eyepieces, objectives, colour filters, phase contrast units, a darkfield condenser, a simple polarising unit **2** a butterfly head, through to complete fluorescence units are available to you as accessories.
- A protective dust cover, eye cups, as well as multi-lingual user instructions are included in the scope of delivery.
- A C-mount adapter is required to connect a camera. You can select this adapter from the following model outfit list.

Please refer to the website for further details as well as information on the full range of model features

Scope of application

- Haematology, urology, gynaecology, dermatology, pathology, microbiology and parasitology, immunology, Sewage treatment plants, Oncology, entomology, vets, water analysis and breweries

Applications/Samples

- Translucent, thin, low-contrast, challenging samples (e.g. living mammal cells, bacteria, tissue)

Technical data

- Infinity optical system
- Quintuple nosepiece
- Siedentopf 30° inclined/360° rotatable
- Diopter adjustment: Both-sided
- Overall dimensions W×D×H 390×200×400 mm
- Net weight approx. 9 kg

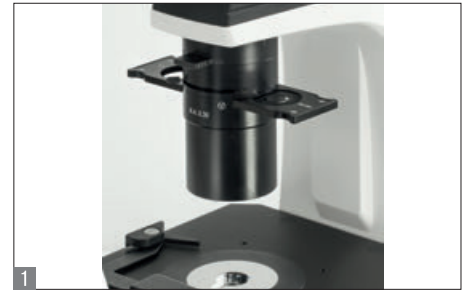
STANDARD

OPTION

Model	Standard configuration					
	Tube	Eyepiece	Objective quality	Objectives	Illumination	
KERN						
OBN 132	Trinocular	HWF 10×/ø 20 mm	Infinity Plan	4×/ 10×/20×/ 40×/100×	6 V/20 W Halogen (transmitted)	↓
OBN 135	Trinocular	HWF 10×/ø 20 mm	Infinity Plan	4×/10×/20×/ 40×/100×	3 W LED (transmitted)	↓
OBN 158	Trinocular	HWF 10×/ø 20 mm	Infinity Plan	4×/PH10×/PH20×/ PH40×/PH100×	6 V/20 W Halogen (transmitted)	↓
OBN 141 <small>NEW</small>	Trinocular	WF 10×/ø 20 mm	Infinity Plan	4×/10×/20×/ 40×/100×	LED + 3 W LED Epi Fluorescence (B/G)	
OBN 147	Trinocular	WF 10×/ø 20 mm	Infinity Plan		Halogen + 100 W Epi Fluorescence (B/G)	↓
OBN 148	Trinocular	WF 10×/ø 20 mm	Infinity Plan		Halogen + 100 W Epi Fluorescence (B/G/UV/V)	↓

NEW New model

↓ Price reduction



The inverted biological laboratory microscope – also with fluorescence

Features

- The OCM range stands out through its design which is ergonomic, robust and extremely stable. This design, with its large working distance, is particularly suitable for the monitoring and analysis of cell cultures, for example.
- Strong and infinitely adjustable 30W halogen illumination unit ensures the optimum illumination in the bright field of your samples. An additional Osram 100 W Epi fluorescence illumination unit is available to you as a fluorescence microscope (OCM 165) for perfect illumination and stimulation of your fluorescence samples.
- **1** A special Abbe N.A. 0.3 condenser with aperture diaphragm and large working distance of 72 mm guarantees the very best working practise in the bright field and with fluorescence applications.
- As standard, the OCM range is fitted with a trinocular eyepiece tube.
- The mechanical stage including specimen holder (∅ 118 mm) means that you can work quickly and effectively. Further brackets for petri dishes are included with delivery or available as accessories.
- Further options such as, for example, a selection of eyepieces, objectives, specimen holders and other phase contrast units can be integrated as accessories.
- A protective dust cover as well as multi-lingual user instructions are included in the scope of the delivery

Scope of application

- Research and breeding of cell cultures and tissue cultures

Applications/Samples

- Particularly for viewing samples in culture vessels (flasks, petri dishes, microtitre plates), translucent, thin, low-contrast, challenging samples (e.g. immuno fluorescence, FISH, DAPI staining, etc.)

Technical data

- Infinity optical system
- **2** Quintuple nosepiece
- Siedentopf-head, 45° tilt
- Dioptre compensation on both sides

OCM 161

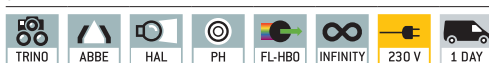
- Overall dimensions W×D×H 304×599×530 mm
- Net weight approx. 13,5 kg

OCM 165

- Overall dimensions W×D×H 304×782×530 mm
- Net weight approx. 21 kg

Please refer to the website for further details as well as information on the full range of model features

STANDARD



Model	Standard configuration					
	Tube	Eyepiece	Objective quality	Objectives	Illumination	
KERN						
OCM 161	Trinocular	HWF 10×/∅ 22 mm	Infinity Plan	LWD10×/LWD20×/ LWD40×/ LWD20×PH	6 V/30 W Halogen (transmitted)	↓
OCM 165	Trinocular	HWF 10×/∅ 22 mm	Infinity Plan	LWD10×/LWD20×/ LWD40×/ LWD20×PH	6 V/30 W Halogen + 100 W Epi Fluorescence (B/G)	↓





Also available as a digital model

Refractive index measurement for laboratories

Features

- The KERN ORA refractometers are universal, maintenance free analogue handheld refractometers
- The main scope of applications is: Hospitals, Doctor's surgeries/Physicians, Medical training institutions, Nursing homes, Sports medicine (doping test)
- Particularly the ORA 2PA is suitable for the measurement of the specific gravity (sg) in urine, the quantity of serum (serumproteine) in urine (doping control among athletes), and the refractive index. The ORA 5PB has been developed specially for the veterinary sector
- The handy and robust design allows the easy, efficient and sustainable use in everyday life.
- Manually calculated conversions and errors of the user are avoided by multiple selectable scales
- These scales are especially developed, exactly calculated and checked. They are also characterized by their thin and clear lines
- The optical system and the prism cover are made of special material which allows a low-tolerance measuring
- All ORA models are equipped with an eyepiece for easy and smooth setting for many different diopter strengths
- The models marked with "ATC" have an automatic temperature compensation which enables accurate measurement at different ambient temperatures (10 °C to 30 °C)
- **1** The following accessory-parts are included:
 - Storage box
 - Calibration liquid
 - Pipette
 - Small screwdriver
 - Cleaning tissue
- Further accessories are available optionally

Technical data

- Die-cast housing of copper-aluminium alloy, chrome coated
- Measurement temperature range with ATC: 10 °C–30 °C
- Dimensions of the box W×D×H 205×75×55 mm
- Packing dimensions W×D×H 215×94×65 mm
- Product length: approx. 130–200 mm (depending on the model)
- Net weight approx. 145 g

Please refer to the website for further details as well as information on the full range of model features



Model	Scales	Measuring range	Division	ATC	
KERN					
ORA 4RR	Refractive index	1,440 – 1,520 nD	0,001 nD		
ORA 2PA	Serum protein Urine (spec. gravity) Refractive index	0 – 12 g/dl 1,000 – 1,050 sgU 1,3330 – 1,3600 nD	0,2 g/dl 0,002 sgU 0,0005 nD	✓	
ORA 32BA	Brix	0 – 32 %	0,2 %	✓	
ORA 5PB	Serum protein Urine (s. g. dog) Urine (s. g. cat)	2 – 14 g/dl 1,000 – 1,060 sgU 1,000 – 1,060 sgU	0,1 g/dl 0,001 sgU 0,001 sgU		

KERN Veterinary scales

Animal scales for weighing pets and livestock such as rabbits, cats, dogs, snakes, sheep, horses etc.

Electronic animal scales from KERN are the very best tool for checking animal weight. KERN animal scales stand out from the crowd because they are easy to use, have a high degree of mobility, with robust technology, a large display and ergonomic design. From scales for small animals, which are also ideal for weighing animal feed in line with a diet sheet, through to high-capacity floor scales for animals weighing up to 300 kg, right up to hanging and crane scales for mobile weighing of animals up to 1 tonne, KERN's veterinary scale range offers a wide choice.

Many useful functions assist the vet, animal keeper or pet owner in their daily work with the animal. Thanks to a special animal weighing program, a steady weight will be displayed, even if the animal moves during the weighing process. You can use the practical HOLD function, which means that the weight obtained will continue to be displayed even after the animal has been removed from the scale. This means that you have time to take care of the animal first.

Whether stationary in a veterinary practice, or mobile at the home of a pet owner, in enclosures or in the wild, the power supply to the KERN veterinary scales is always guaranteed thanks to mains or battery operation.

KERN – for the love of animals!





Practical assistant for the mobile weighing of heavy house pets, animal feed etc. up to 1 t!

Features

- Thanks to the animal weighing function, it can also be used by vets. Compact so it can be stored in the vet's case and is ideally suited for heavy pets
- Data hold function:
For easy reading of the weight, the display can be "frozen" in different ways. Either automatically when the weighing value remains unchanged or manually by pressing the Hold key
- Varied options for hanging the items, thanks to the stainless steel hook and stainless steel snap links included as standard (not with models HCB with [Max] ≥ 0.5 t)
- Peak load display (peak hold), measuring frequency 5 Hz

HCB

- Ready for use: Batteries standard, 3× 1,5V AA, operating time approx. 300 h
- 1 HCB with [Max] ≥ 0,5 t: Reinforced versions for heavy loads. Snap link and hook not included

HCN

- Ready for use: Batteries included 2× 1,5V AA, operating time approx. 200 h
- 2 Housing stainless steel, IP65: Protected against dust and water splashes
- 3 Second display on the rear of the balance

Technical data

- LCD display, digit height 12 mm
- Hole diameter of load support, model with [Max] ≤ 200 kg: approx. 14 mm [Max] > 200 kg: approx. 16 mm

Accessories for models with [Max] ≥ 100 kg

- Hook with safety catch, cast steel, galvanised and lacquered, revolving. Scope of supplies: 2 shackles, 1 lacquered screw bolt, 1 hook, KERN YHA-06

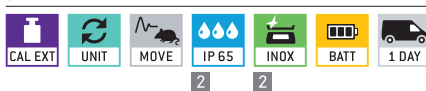
Accessories for models with [Max] ≤ 200 kg

- Hook (stainless steel) standard, aperture approx. 25 mm, can be reordered, KERN HCB-A02
- Snap link (stainless steel) with safety catch standard, aperture approx. 15 mm, can be reordered, KERN HCB-A01

Accessories for models with [Max] ≥ 0,5 t

- High-strength shackles, hot-dipped galvanised cast steel bracket, curved edge. Scope of supplies: 2 shackles with lacquered screw bolts, suitable for the following models: KERN HCB with [Max] ≥ 0,5 t, KERN YSC-03

STANDARD



Model	Weighing range		Readout	LCD display, digit height	Dimensions housing W×D×H mm	Height with snap link and hook mm	Net weight approx. kg
	[Max] kg	[d] kg					
KERN							
HCB 20K10	20	0,01	12	80×45×150	290	0,60	
HCB 50K20	50	0,02	12	80×45×150	290	0,60	
HCB 50K100	50	0,1	12	80×45×150	290	0,60	
HCB 99K50	99	0,05	12	80×45×150	290	0,60	
HCB 100K200	100	0,2	12	80×45×150	290	0,35	
HCB 200K100	200	0,1	12	80×45×150	290	0,60	
HCB 200K500	200	0,5	12	80×45×150	290	0,60	
HCB 0.5T-3	500	1	12	80×42×152	-	0,35	
HCB 1T-3	1000	2	12	80×45×150	-	0,35	
stainless steel							
HCN 50K100IP	50	0,1	12	95×50×180	315	0,8	
HCN 100K200IP	100	0,2	12	95×50×180	315	0,8	
HCN 200K500IP	200	0,5	12	95×50×180	315	0,8	



All-purpose small pet scale for mobile and stationary use

Features

- Ideal table scale for weighing small animals or for the laboratory
- Particularly flat design
- Plastic weighing tray, removable
- For easy and hygienic cleaning
- Tare function facilitates formulation work
- Simple and convenient 2-key operation

Technical data

- LCD display, digit height 15 mm
- Dimensions of weighing plate:
 - A** \varnothing 82 mm
 - B** \varnothing 105 mm
 - C** \varnothing 150 mm, see larger picture
- Batteries included, 9V block respectively 2x1,5V AA
- Socket for mains adapter included
- Net weight approx. 0.5 kg

Accessories

- External universal mains adapter, with universal input and optional input socket adapters for EU, GB, USA, not included, can be reordered, KERN YKA-03

STANDARD



OPTION



Model	Weighing range [Max] g	Readout [d] g	Weighing plate	Dimensions housing WxDxH mm
KERN				
EMB 200-3	200	0,001	A	170x240x54
EMB 200-2	200	0,01	B	170x240x39
EMB 600-2	600	0,01	B	170x240x39
EMB 2000-2	2000	0,01	C	170x240x54
EMB 500-1	500	0,1	C	170x240x39
EMB 1200-1	1200	0,1	C	170x240x39
EMB 6000-1	6000	0,1	C	170x240x39
EMB 2200-0	2200	1	C	170x240x39
EMB 5.2K1	5200	1	C	170x240x39
EMB 5.2K5	5200	5	C	170x240x39



KERN FOB-NS



KERN FOB-N

Compact stainless steel scales with high-level protection against dust and water splashes

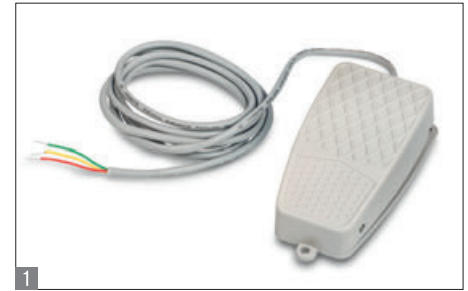
	KERN FOB-NS	KERN FOB-N
Features	<ul style="list-style-type: none"> Stainless steel design of the housing and weighing plate. Its smooth surfaces make it simple to clean High mobility: thanks to compact, flat construction, it is suitable for use in several locations, secure and non-slip positioning through rubber feet Your support in an HACCP-compliant quality system 	
	<ul style="list-style-type: none"> IP65: Protected against dust and water splashes (only when using battery) Particularly flat design 	<ul style="list-style-type: none"> IP67: Protected against dust and water splashes (only when using battery)
Technical data	<ul style="list-style-type: none"> Large LCD display, digit height 20 mm Overall dimensions W×D×H 170×150×40 mm Ready for use: battery 9V Block standard, operating time up to 24 h Permissible ambient temperature 10 °C/35 °C 	<ul style="list-style-type: none"> Large backlit LCD display, digit height 25 mm Overall dimensions W×D×H 285×255×90 mm Ready for use: battery 4× 1,5V AA standard, operating time up to 66 h without backlight Permissible ambient temperature 5 °C/35 °C
Accessories	<ul style="list-style-type: none"> Protective working cover over keyboard and housing, standard, can be reordered, scope of delivery 5 pcs., KERN FOB-A12S05 Mains adapter external, not included, can be reordered, KERN FOB-A09 	<ul style="list-style-type: none"> Protective working cover over keyboard and housing, standard, can be reordered, scope of delivery 5 pcs., KERN FOB-A13S05 Mains adapter external, not included, can be reordered, KERN FOB-A01

STANDARD						OPTION

STANDARD						OPTION

Model	Weighing range [Max] kg	Readout [d] g	Net weight approx. kg	Weighing plate mm	
KERN					
FOB 0.5K-4NS	0,5	0,1	0,80	120×150	
FOB 5K-3NS	5	1	0,80	120×150	
FOB 7K-4NL	5 7,5	0,5 1	3,80	252×200	↓
FOB 10K-3NL	8 15	1 2	3,80	252×200	↓
FOB 30K-3NL	16 30	2 5	3,80	252×200	↓

↓ Price reduction



Stainless steel platform scale with stainless steel IP68 display and EC type approval [M]

Features

- Robust stainless steel platform scale to weigh animals
- Platform entirely out of stainless steel with protection against dust and water splashes IP68, which makes cleaning easy and hygienic
- Stainless steel display device with protection against dust and water splashes IP68. Suitable for the ever-increasing hygienic requirements in the medical environment. Wall mount for display device as standard
- Superior display size: digit height 55 mm. Bright backlight for easy reading of weight, even in poor lighting conditions
- Thanks to the RS-232, RS-485 and Bluetooth (optional) interfaces, the scale can easily be connected to existing networks. Data exchange between the scale and PC or printer is made easier

Technical data

- Large backlit LCD display, digit height 55 mm
- Weighing plate dimensions stainless steel W×D×H
 - A** 300×240×86 mm
 - B** 400×300×89 mm
 - C** 500×400×123 mm
 - D** 650×500×133,5 mm
- Dimensions of display device W×D×H 232×170×80 mm
- Cable length of display device approx. 2,5 m

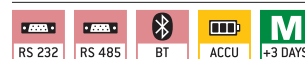
Accessories

- Rechargeable battery pack internal, operating time up to 80 h, without backlight, charging time approx. 12 h, must be ordered at purchase, KERN GAB-A04
- Data interface RS-232, interface cable included, approx. 1.5 m, must be ordered at purchase, KERN KXS-A04
- Data interface RS-485, must be ordered at purchase, KERN KXS-A01
- **1** Foot switches for easy taring on balances or to trigger the PRINT function with your foot – in this way both hands remain free, must be ordered at purchase, KERN KXS-A03
- Bluetooth data interface for wireless data transfer to PC, must be ordered at purchase, KERN KXS-A02

STANDARD



FACTORY



Model	Measuring range [Max] kg	Readout [d] g	Verification value [e] g	Minimum load [Min] g	Net weight approx. kg	Weighing plate	Mandatory by law Verification	
							M	KERN
SXS 6K-3M	3 6	1 2	1 2	20 40	6	A	965-228	
SXS 10K-3M	6 15	2 5	2 5	40 100	7	A	965-228	
SXS 10K-3LM	6 15	2 5	2 5	40 100	11,8	B	965-228	
SXS 30K-2M	15 30	5 10	5 10	100 200	11,8	B	965-228	
SXS 30K-2LM	15 30	5 10	5 10	100 200	20,8	C	965-228	
SXS 60K-2M	30 60	10 20	10 20	200 400	11,8	B	965-229	
SXS 60K-2LM	30 60	10 20	10 20	200 400	20,8	C	965-229	
SXS 100K-2M	60 150	20 50	20 50	400 1000	20,8	C	965-229	
SXS 100K-2LM	60 150	20 50	20 50	400 1000	36,5	D	965-229	
SXS 300K-2M	150 300	50 100	50 100	1000 2000	36,5	D	965-229	

Dual-range balance switches automatically to the next largest weighing range [Max] and readout [d].

Compact veterinary scale for diverse applications –
also with XL platform or wireless version



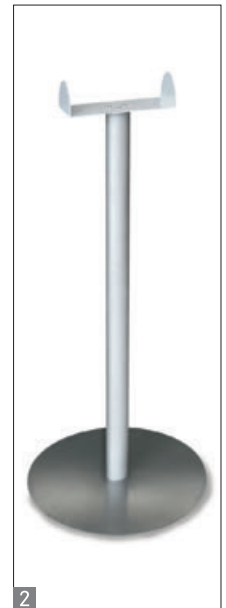
KERN EOB
Display device cable-connected
to platform



KERN EOB-F
Wireless communi-
cation between the
platform and display
device



KERN EOE



Features

- Platform scale to weigh animals
- Removable stainless steel (EOB, EOB-F) respectively lacquered steel (EOE) weighing plate, which makes cleaning easy and hygienic
- Animal weighing program: When the animal moves during the weighing process, a stable weight is calculated using an average weight and this is then “frozen”. This means that you have sufficient time to attend to the patient first and then take the weight reading in peace
- Wall mount for the display device
- Simple and convenient 4-key operation
- Integrated AUTO-OFF function to preserve the batteries

Technical data

- Large LCD display, digit height 25 mm
- Dimensions of display device
W×D×H 210×110×45 mm (EOB- EOB-F)
W×D×H 235×114×51 mm (EOE)
- Battery operation possible, 6×1,5V AA (EOB, EOE), 6× 1,5 V AA (EOB-F), not included, operating time up to 60 h (EOB, EOB-F), 100 h (EOE)
- Mains adapter (external) included

Accessories

- **1** Stand to elevate display device (for models with weighing plate sizes 315×305 mm), height of stand approx. 450 mm, KERN EOB-A01N
- **2** Stand, for all models EOB, EOB-F, height of stand approx. 950 mm, KERN MWS-A01
- Only EOE: Stand to elevate display device, height of stand approx. 950 mm, can be retrofitted, KERN MWS-A01-2017
- Sturdy transport case to protect and store the scale, only for models with weighing plate sizes 315×305 mm and without stand, KERN MPS-A07
- Protective working cover over the display device, standard, can be re-ordered, scope of delivery: 5 items, KERN EOB-A02S05

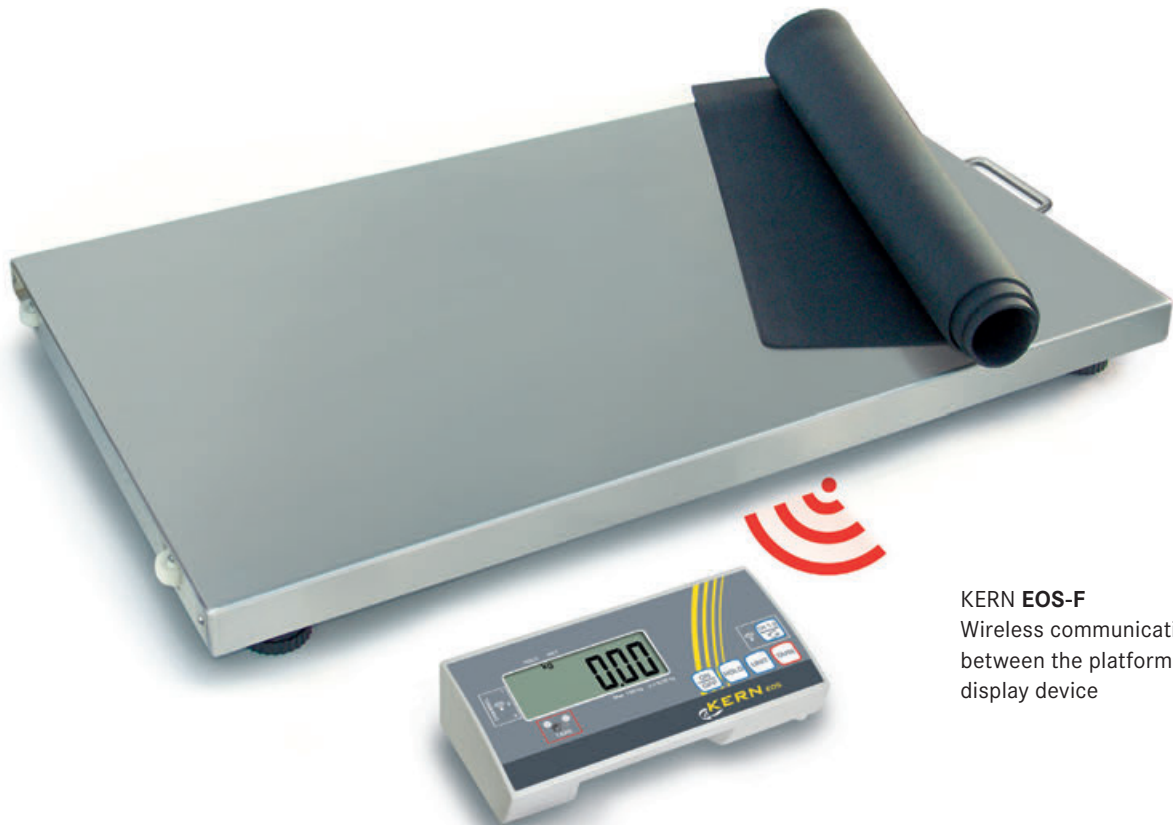
STANDARD



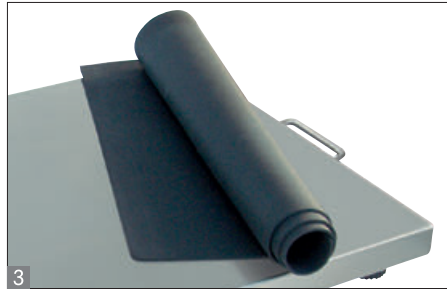
Model	Weighing range	Readout	Weighing plate	Cable length approx.	Net weight approx.	
	[Max] kg	[d] g	mm	cm	kg	
KERN						
EOB 15K5	15	5	315×305×55	200	4	
EOB 35K 10	35	10	315×305×55	180	4	
EOB 60K20	60	20	315×305×55	220	4	
EOB 60K20L	60	20	550×550×75	270	14	↓
EOB 35K-2F	35	10	315×305×55	-	4	
EOB 60K-2F	60	20	315×305×55	-	4	
EOB 60K-2LF	60	20	550×550×65	-	14	
EOB 150K-2F	150	50	315×305×55	-	4	
EOB 150K-2LF	150	50	550×550×65	-	14	
EOB 300K-1LF	300	100	550×550×65	-	14	
EOE 150K50XL	150	50	950×500×55	270	18	↓
EOE 300K100XL	300	100	950×500×55	270	18	↓



Affordable veterinary model that is suitable for stationary or mobile use – also available in a wireless version KERN EOS-F



KERN EOS-F
Wireless communication
between the platform and
display device



KERN EOS

Features

- Robust platform scale to weigh large animals
- Weighing plate made out of stainless steel, for easy and hygienic cleaning
- The low platform height facilitates access
- Animal weighing program: When the animal moves during the weighing process, a stable average value is obtained by pressing the HOLD key. This value remains “frozen” until the HOLD key is pressed again. This leaves sufficient time to look after the small patients and then read the weight in peace
- Simple and convenient 4-key operation
- Integrated AUTO-OFF function to preserve the batteries, adjustable
- Non-slip rubber mat standard
- Wall mount for display device
- 1 The scale can be easily transported using 2 rollers and a handle and does not require much storage space

EOS-F

- Display device with integrated radio module for wireless communication with the weighing platform: ideal for weighing contaminated items, weighing in loud environments or where physical separation is necessary
- For networked operation: Ideal for larger veterinary practices. In this way up to 3 platforms can be read out centrally in different treatment rooms using one display device
- 2 Touchless tare function: just give it a wave. Never again will you need to operate the balance with dirty gloves

Technical data

- Large LCD display, digit height 25 mm
- Dimensions of display device W×D×H 210×110×45 mm
- Dimensions of weighing plate stainless steel W×D×H 950×500×60 mm
- Battery operation possible, 4× 1,5V AA, not included
- Mains adapter (external) included

Accessories

- 3 Non-slip rubber mat standard, W×D 900×550 mm. can be reordered, KERN EOS-A01
- Stand to elevate display device, height of stand approx. 950 mm, KERN MWS-A01
- Protective working cover over the display device, standard, can be re-ordered, scope of delivery: 5 items, KERN EOB-A04S05

STANDARD



EOS-F

Model	Weighing range	Readout	Cable length approx.	Net weight approx.	
	[Max] kg	[d] kg	cm	kg	
KERN EOS 150K50XL	150	0,05	270	19	
KERN EOS 300K100XL	300	0,1	270	19	
KERN EOS 150K50XLF	150	0,05	-	20	
KERN EOS 300K100XLF	300	0,1	-	20	

Legal notice

Medical personal scales are understood to be all non-automatic scales that are intended to be used to determine the body weight in medical applications (e.g. patient, baby, chair and bed scales, verified according to class). These scales are regulated by European Directive 2014/31/EU.

- Medical personal scales are also governed by the regulations for medical devices that are placed on the market in accordance with European Directive 93/42/EEC (for Germany: Medical Products Law [MPG])

Types of scales for medical applications that require mandatory verification:

APPROVED MEDICAL DEVICE

- Personal scales (incl. chair and wheelchair scales) in hospitals
- Baby scales and mechanical birth weight scales
- Bed scales
- Scales in dialysis units

Verified medical personal scales with a maximum resolution of 3000 digits are classified as Verification Class III (see type plate).

The re-verification deadlines depend on the location of use and are given in the Verification Ordinance. The operating manual specifies the re-verification deadlines for Germany at the time of going to press. The operator of the scale is obliged to ensure that the verification stamps are not damaged and that the statutory re-verification deadlines are observed.

KERN & SOHN GmbH does not accept responsibility for this.

Scales not specifically intended as a medical device and without verification:

These scales do not have an approval according to Directive 93/42/EEC (or the German Medical Products Law). They are thus not permitted for use in medical applications. They are used for self-checks by the patient and are not verified.

A mandatory verification is not required for the following intended uses:

PROFESSIONAL CARE

- Body weight scales in pathology (not a medical application according to § 7b Paragraph 2 No. 4 of the Verification Ordinance)
 - Personal and baby scales (the latter can usually be borrowed in pharmacies)
 - Baby scales for midwives
 - Personal scales during blood collection for the preparation of blood products
- (Information from: "Die Eichverwaltung informiert, Waagen in der Heilkunde" (Information from the Verification Office: Scales in medical applications) dated 19.04.2013)

HOME CARE

Non-verified scales are not permitted to be used in medical applications. They are used for self-monitoring of the health status. Examples of these include personal scales, body fat scales, etc. Such scales can be used to determine weight trends so that a doctor can be consulted in case of doubt. The patient is then weighed with verified scales at the medical practice to enable diagnosis.

Other information

Balances with an EC Type-Approval which have been distributed without verification, cannot be subsequently verified. Non verified balances are not acknowledged as a medical product in accordance to norm 93/42/EEC and therefore, may not be used in medical applications.

Gravitational force

Electronic balances are subject to location regulations due to the earth's gravitational force. If the location of use is changed, the electronic balance must be re-verified and re-calibrated.