

Portadot - Dot Peen Marking



The Pryor PortaDot Range provides a fast and portable method of dot-peen marking, otherwise known as dot marking. It is ideal for marking permanent alphanumeric, logo or 2D barcode information onto immobile, large or heavy components and is often used in rail, oil and gas, foundry and construction applications.

- Portable permanent marking by dot-peen method
- Ideal for marking immobile, large or heavy components
- Often used in rail, oil and gas/pipeline, casting/forging, VIN marking, and construction applications
- Marks a series of indented 'dots' that are able to create alphanumeric, logo or 2D barcode information

Overview

Lightweight Marking Machine

The Pryor Portable dot marking range provides a choice of lightweight, portable marking heads with three different sized marking windows – 50mm x 25mm, 100mm x 75mm and 130mm x 30mm – suitable for engraving identification, logo or 2D barcode information onto a wide range of material shapes and sizes. The added advantage of the handheld devices is the ease with which they mark large, heavy or immobile parts.

The PortaDot can be added to a trolley for extra mobility and for secure storage. For users wanting to mark various sized components, Pryor offers an optional column and base for converting to a benchtop machine. The electromagnetic clamping fixture secures the marking head for wobble prevention and is often used for marking larger components. A 'V' shaped front mask enables marking of curved surfaces. If you are using a PortaDot in a production line environment, or one short of space, the balancer is an ideal accessory to have.

The PortaDot is suitable for use in even the toughest industrial environments and is often used for cast and forge marking and oil and gas marking. The robust aluminium marking head is protected by strong metal casing, providing excellent reliability and long product lifespan. The portable dot marking machines can permanently mark most engineering materials up to 62HRC.

The PortaDot is fully programmable, allowing complete flexibility and control over mark output from depth settings to spacing of the dots, character font and size, arc marking, Data Matrix marking, serial numbering, time and date marking and various other options. The software is easy to use and layouts can be saved for repeatability and consistency. No PC connection is required, however this can be enabled if so desired. The controller is separate from the marking head to ensure the integrity of the electronics, which would be compromised if they were mounted on the marking head.

Pryor has also developed a Deep Pneumatic PortaDot for creating deep marks and for marking very hard materials. This is ideal when the mark is to be painted or coated. Whatever your requirements, Pryor will have a solution.

- Portable and lightweight
- 3 marking window size options
- Fully programmable for flexibility and control
- Large storage capacity for fast set-up of pre-designed marking layouts
- A variety of fixturing options are available to tailor the machine to your specific requirements. Custom fixturing option also available on request.

Our Solutions

- Traceability and Data Capture
- Automated Part Marking
- Aerospace Marking Standards
- Automotive VIN Marking
- Hand Tools for Marking and Identification
- Serial Number Marking
- Logo Marking
- Production Data Monitoring

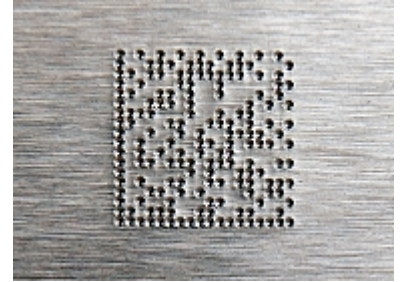


303A Ashcake Road, Ashland VA 23005 USA

T: (804) 4966669

E: sales@pryortechnology.com

W: www.pryormarking.com



Pryor Technology Inc.
303A Ashcake Road
Ashland
VA 23005
USA

(804) 4966669

Pryor Marking Technology designs and manufactures the widest range of permanent marking systems in the world, together with software and barcode readers for component tracking and tracing.

Our Solutions

- Traceability and Data Capture
- Automated Part Marking
- Aerospace Marking Standards
- Automotive VIN Marking
- Hand Tools for Marking and Identification
- Serial Number Marking
- Logo Marking
- Production Data Monitoring

Products and Solutions available from Pryor



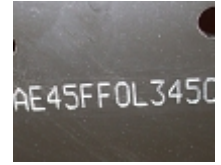
Traceability and Data
Capture



Automated Part
Marking



Aerospace Marking
Standards



Automotive VIN
Marking



Hand Tools for Marking
and Identification



Serial Number
Marking



Logo Marking



Production Data
Monitoring

Our Solutions

- Traceability and Data Capture
- Automated Part Marking
- Aerospace Marking Standards
- Automotive VIN Marking
- Hand Tools for Marking and Identification
- Serial Number Marking
- Logo Marking
- Production Data Monitoring