

Vestjysk Orienteringsklub

invites to
**OPEN DANISH CHAMPIONSHIP,
WORLD CUP and DANISH CUP**
in
BIATHLON ORIENTEERING.

Mass Start

Saturday 31 October 2015

Classic distance

Sunday 1 November 2015

Competition area and competition center.

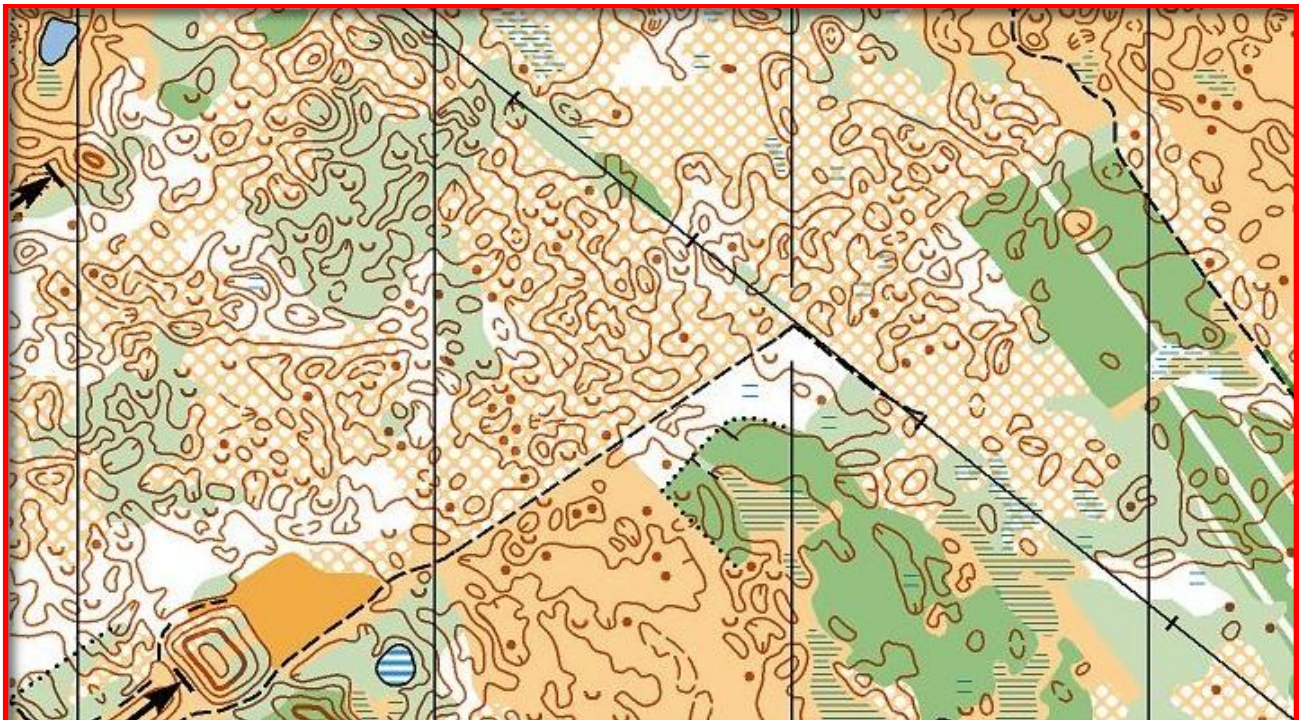
Ulfborg Plantage. Competition Center is Ulfborg Skyttecenter, Torstedvej 1, 6990 Ulfborg.

Map.

1 : 10.000 for all classes, rev. 2010, updated 2015. Equidistance 2,5 m.

Terrain.

The terrain consists of coniferous forest including some open moor land in between. Inland sand dunes form the contour lines of the terrain. Some vegetation is open, giving good visibility, with some scattered thicker parts with low visibility and slow runability



Classes.

M/W-20, M/W21, M/W40, M/W50, M/W60, Intro

If too few competitors are registered in a class, classes might be merged.

Intro class will complete medium difficult orienteering course and easy shooting element (all prone and big targets).

Expected timetable.

Saturday 31 Oct Mass Start.

9.30 AM	CC open
10.30 - 11.45 AM	Zeroing (adjustment shooting). Visiting targets not allowed.
12.00 PM	First class start.
15.00 PM	All finished.
18.30 PM	Dinner at Danhostel, Holstebro and prize giving for Mass Start.

Sunday 1 Nov Classic distance.

8.00 AM	CC open
8.15 - 9.30 AM	Zeroing (adjustment shooting). Visiting targets not allowed.
09.45 AM	First start
14.00 PM	All finished and prize giving.

Punching.

EMIT, please state number at entry form. EMIT card can be rented at a fee of 15 DKK per competition day. If a EMIT number is not specified at entry a rental EMIT card will be allocated. Competitors failing to return rented card will be charged a fee of 400 DKK .

Entry.

Entry must be received no later than Friday 16th of October by mail to vsv@webspeed.dk
Please use the enclosed entry form.

Fees.

DKK 100 per entry/competition.

Entry fee and dinner payment must be transferred at the date of entry to the following account at Vestjysk Bank, registration no. 7600, account no. 1079771 (VJOK).

Foreign participants can pay via IBAN-number: DK6276000001079771.

BICcode/SWIFT-address: VEHODK22.

Lodging and food.

Lodging is available at Danhostel Holstebro, Sysselting 2B, 7500 Holstebro, 25 km from CC.

2 nights in 4 bed room, 2 x breakfast and make your own lunch packet during breakfast between 500 and 600 DKK per person. Hire of bedlinen and towel is possible. Participant are requested to make reservation by mail directly to: BB@BBBB.dk. and note numbers of persons per room, breakfast, lunch packet and hire of bedlinen. Note also "Biathlon".

Next Danhostel will send you an exact price and a link for payment.

See more at www.danhostel-holstebro.dk

Dinner 31 Oct.

Dinner take place Saturday evening at Danhostel Holstebro at 18.30.

Fee DKK 150 (excl. drinks). Please enter at enclosed entry form.

Startlist, results and info.

<http://biathlon.dk/> and <http://www.vestjyskorientering.dk/>

Further info.

Varny Vestergaard. Mail: vsv@webspeed.dk. Mobil: +45 2142 6660