

# VISOR

<b>Description</b>	Hygiene protection visor
<b>Item number</b>	30006365
<b>Dimensions</b>	385 mm length, 220 mm height
<b>Weight Net</b>	60 g
<b>Gross</b>	65 g

<b>Material</b>	
<b>Visor and holding strip</b>	PET 0.4 mm
<b>Forehead support</b>	Rubber sponge, black
<b>Closure</b>	3M Velcro strip

## Materials and RAW materials

PET: between 0.3 to 0.5 mm

VELCRO: Technical properties tested by EN 12242 methods; ISO 13934-1; EN 13780; EN ISO 105 E01; ISO 105 E04 and ISO 105 X12.

COLORS: black or white

FOAM: Technical properties tested by NF T 56-112 and NF R 99-211

ELASTIC methods:

70 % Polyester;

30 % Elastane



## Cleaning conditions

### OPERATING LIFE

The useful life of the article depends on the cleaning cycles. It should be replaced as soon as it starts to show a whitish hue.

### MAINTENANCE AND CLEANING / HYGIENE CARE

It can be washed with warm water and soap or, preferably, disinfected with ethyl alcohol (minimum 70°).

## Use

Complementary accessory for direct protection against splashes and fluid droplets.

Compatible with goggles and surgical masks, FFP2, FFP3 and duckbill. It does not provide respiratory protection against biological agents. It is not a medical device and does not eliminate the need for a mask.

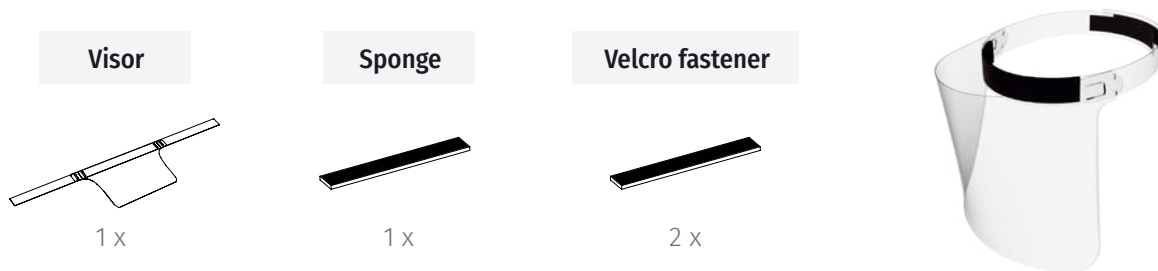
## Photo



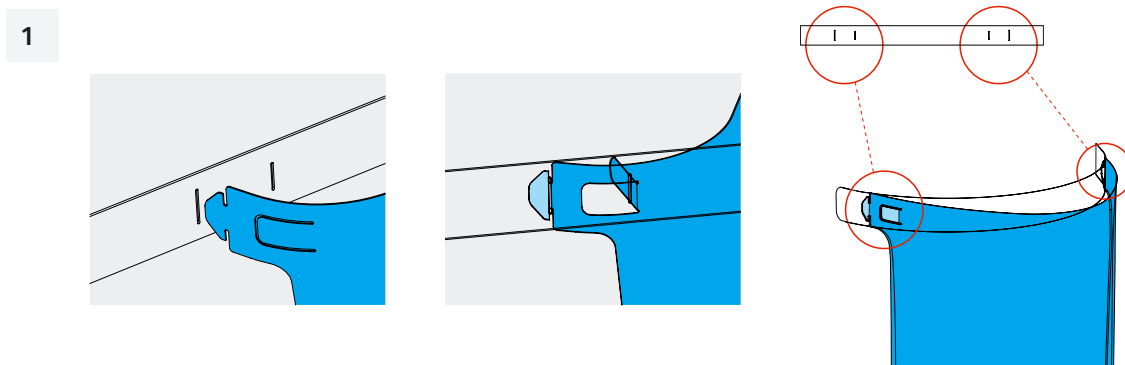
**Meto International GmbH**  
 Ersheimer Str. 69  
 69434 Hirschhorn, Germany  
 Tel.: +49 (0) 62 72-928 0  
 Fax: +49 (0) 62 72-928 204  
 info@meto.com  
 www.meto.com

# USER GUIDE

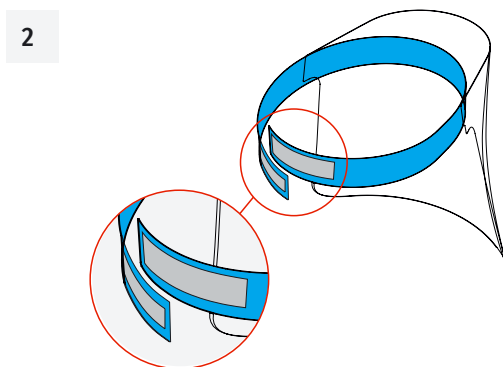
## Components



## Assembly instructions



To connect the visor to the fastening strip, insert the ends of the visor into the slits in the strip.



Adjust the visor to the required size.

## CE Conformity

Meto states that the product is produced in compliance with Norm EN 166 of CE Regulation (UE) 2016/425 of the European Parliament and of the Council of 9 March 2016 on personal protective equipment and repealing Council Directive 89/686/EEC.

Certified with the Norms: ISO 9001, ISO 14001

MA 0520 P2982 PRODUCT DATA SHEET VISOR