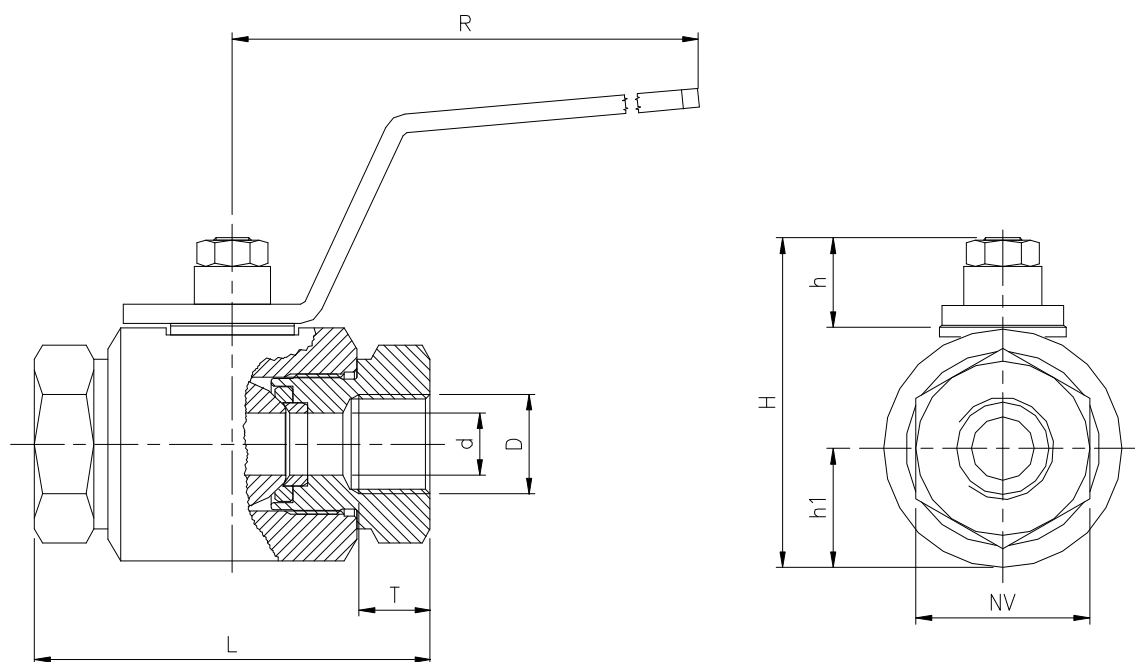




HYDRO-BALL® SERIE 65



Målskema

Med tilslutning IN, indvendigt NPT gevind, ANSI B1.20.1

D	Bar	DN	T	L	H	R	h1	h	NV	Kg/stk
1/4"NPT	500	6	15	83	69	200	24,5	18,5	36	1,09
3/8"NPT	500	10	15	83	69	200	24,5	18,5	36	1,08
1/2"NPT	500	15	15	83	69	200	24,5	18,5	36	1,07
3/4"NPT	315	20	18	105	99	200	37,5	20,5	55	2,88
1"NPT	315	25	20	105	99	200	37,5	20,5	55	2,80
1 1/4"NPT	250	32	22	130	126	250	49,0	26,5	75	6,00
1 1/2"NPT	250	40	24	130	126	250	49,0	26,5	75	5,86
2"NPT	250	40	26	130	126	250	49,0	26,5	75	6,60
2"NPT	150	50	26	145	150	250	60,0	28,5	95	9,00