

SHINE

80% polyester, 20% spandex

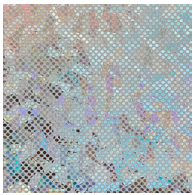
Used as effects on leotards, tights, leggings and gymdresses.

As the colours may vary, depending on screen resolution colour charts are only meant as a guideline.

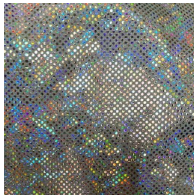
CHOPAR offers
no guarantee
of shine fabrics.

LIMITED! Limited amount on stock. Ask for more information

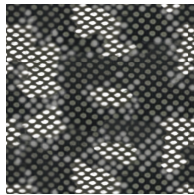
1138-1100



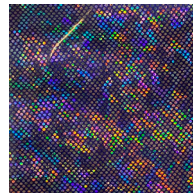
1138-1185



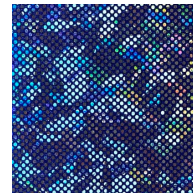
1138-1190



1138-6210



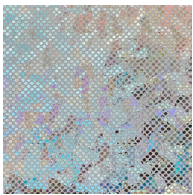
1138-7165



1138-9923



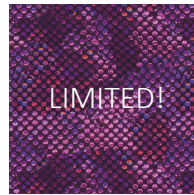
1050-1100



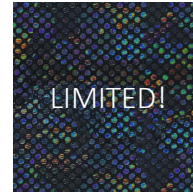
1050-5150



1050-6190



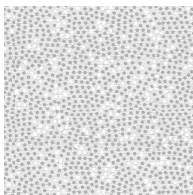
1050-9950



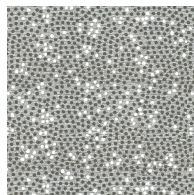
1051-9950



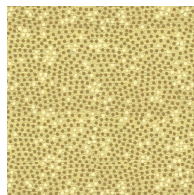
1099-1100



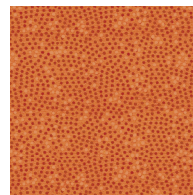
1099-1185



1099-2135



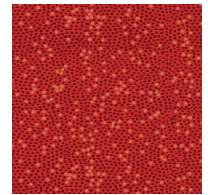
1099-3150



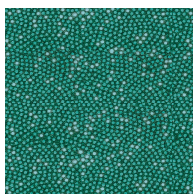
1099-4120



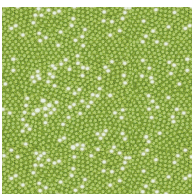
1099-4150



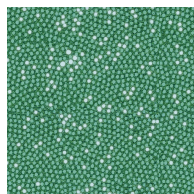
1099-5090



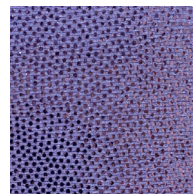
1099-5130



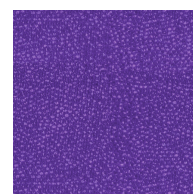
1099-5150



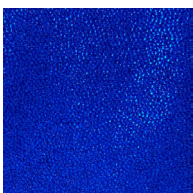
1099-6030



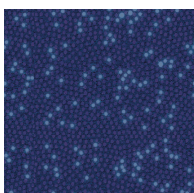
1099-6200



1099-7055



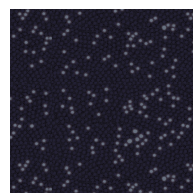
1099-7090



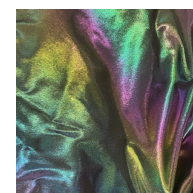
1099-7130



1099-9990



1176-9952

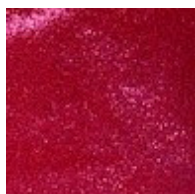


SHINE PRO

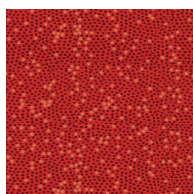
80% polyester, 20% spandex

High performance stretch material for leotards etc.

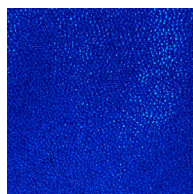
PINK
1164-4120



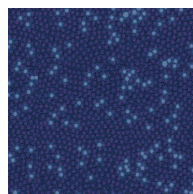
RED
1164-4150



BLUE
1164-7055



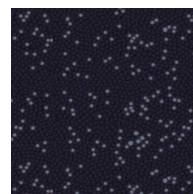
NAVY
1164-7090



TURQUOISE
1164-7130



BLACK
1164-9990



Notice regarding fragile fabrics and stones - Shine, Lace, Mesh and Nylon/Spandex with Foil, sequins and rhinestones.

Fabric softeners negatively affect the adhesives used in our products, causing the foil on our fabrics to discolor and the embellishments to fall off. Deodorants and perspiration may cause the special fabrics to color bleed, fade, or lose foil, especially when two colors meet under the arms. Alcohol in all aerosol products, such as deodorant or hairspray, affects fragile fabrics.

Please cover your garment before applying. Perfumes and body lotions can also affect these fabrics.

Shine, Lace or Mesh could potentially be damaged due to the rigors of certain routines, where person to person or person to surface contact can add stress to the fabric. CHOPAR will not guarantee the lifespan of these fabrics.

Color color bleed occurs when a white or light color fabric is combined with a bright or dark color fabric. This is a typical industry problem and occurs under certain conditions, especially when a light color design is worn under a dark color product (such as warm-up shorts).

Unfortunately, CHOPAR cannot guarantee that our fabrics will not bleed, even by following proper washing instructions due to the individual nature of each athlete's personal hygiene, wear or washing procedure. Repeated wear and washing may cause the fabrics to fade or lose foil.

CHOPAR will not guarantee any garment that is not washed and dried as directed. If you choose to combine sensitive fabrics and colors, it is at your own risk. CHOPAR offers no guarantee of special fabrics. CHOPAR may refuse returns or reclamations on special orders in those combinations.