

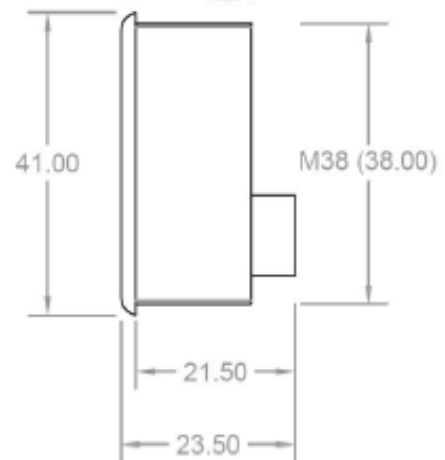
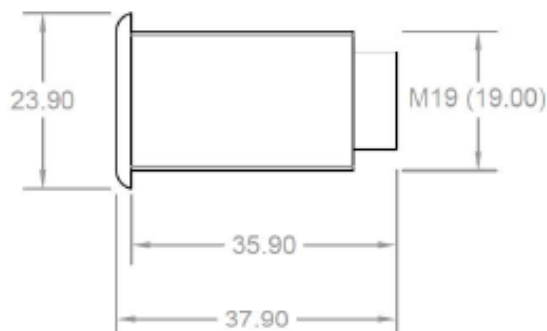
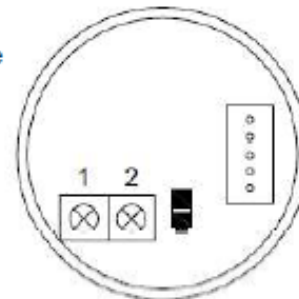
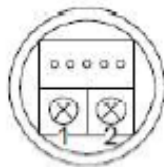
Infrared-button 1319-IR and 1339-IR



Programming of the switching distance and of the switching time

Potentiometer 1 VR1: Switching distance from 3 up to 12cm. Dipswitch (only at 1339-IR):
 Change colours¹

Potentiometer 2 VR2: Switching time from 0.5 up to 20sec.
 When VR2 is completely turned to the left, the relay is in toggle-mode
 (ON / OFF)



Characteristics

	1319-IR	1339-IR
Technology	Contactless infrared-button	
Power supply	12 / 24 VDC	
Current consumption	25mA	35mA
LED display bicolour ¹	LED blue / green	
Relay output	Relay with changeover contact CO / NO / NC	
Switching capacity max.	30VDC / 1A	
Adjustable switching distance	3 up to 12cm, adjustable with the potentiometer 1	
Adjustable switching time	0.5 up to 20 seconds or toggle-mode (ON/OFF), adjustable with the potentiometer 2	
IP-protection class	IP65	
Temperature range	-10°C up to +70°C	
Switching diameter	19mm	38mm
Wall thickness	1mm up to 22mm	1mm up to 9mm
Mounting depth	37.9mm	23.5mm
Dimensions	23.9mm x 19mm x 37.9mm	41mm x 38mm x 23.5mm
Weight	20g	80g