

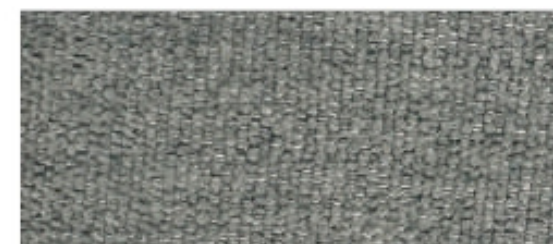
CAPRI 02 BEIGE



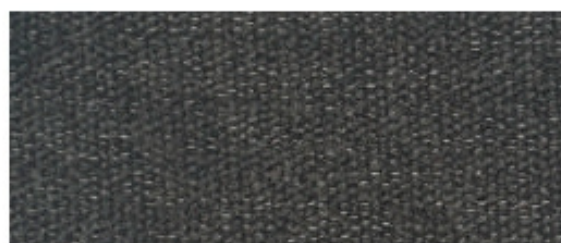
CAPRI 09 SAND



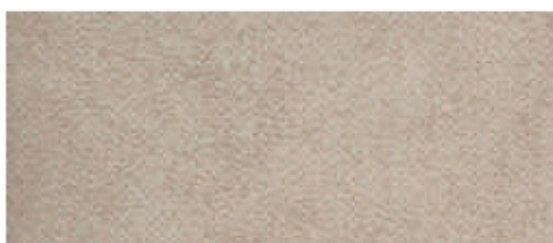
CAPRI 54 RUST



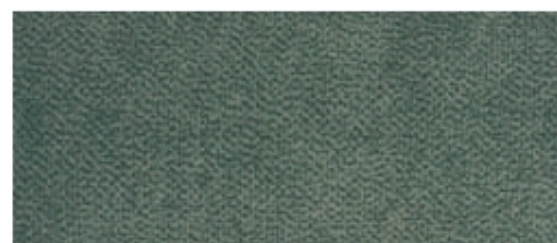
CAPRI 70 MINT



CAPRI 99 COAL



CORSICA 03 BEIGE



CORSICA 33 AQUA



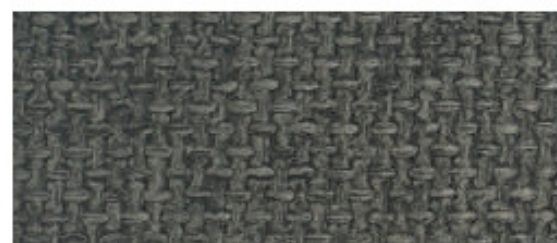
ELBA 01 NATURAL



ELBA 40 ASHGRAY



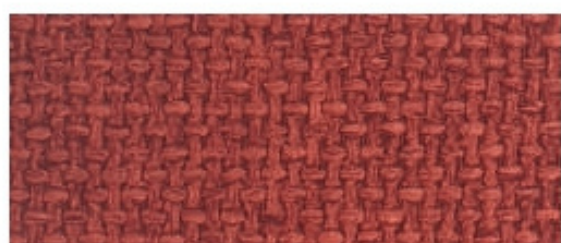
ELBA 116 BRONZE



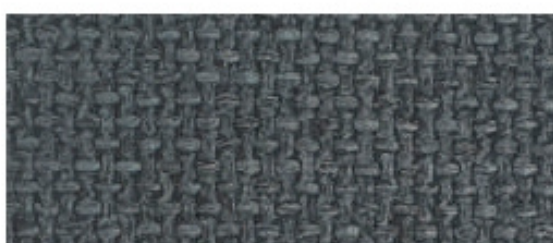
ELBA 156 HUNTER



ELBA 167 ZINC



ELBA 141 SCARLET



ELBA 153 DENIM



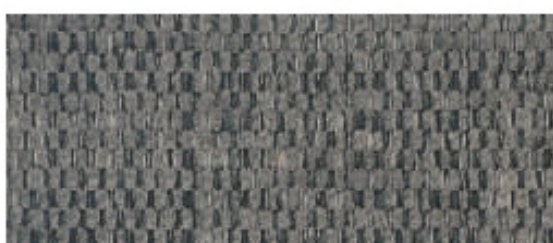
ELBA 206 THYME



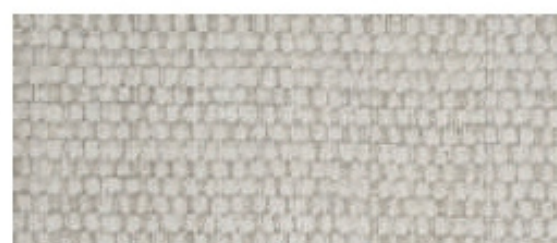
EMMA SYMFONI BEIGE



EMMA SYMFONI 25 LIGHT GRAY



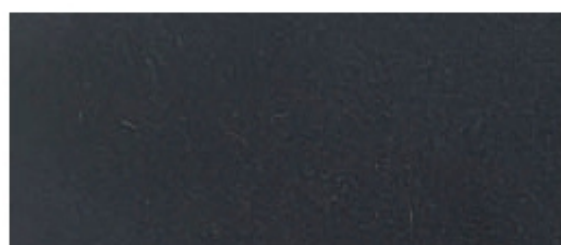
EMMA SYMFONI 04 STEEL GRAY



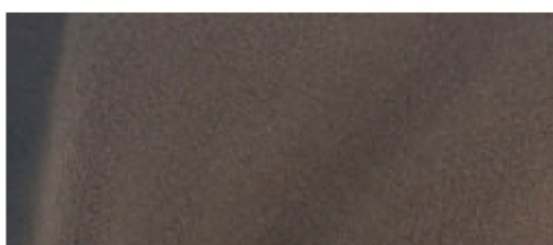
EMMA SYMFONI WHITE



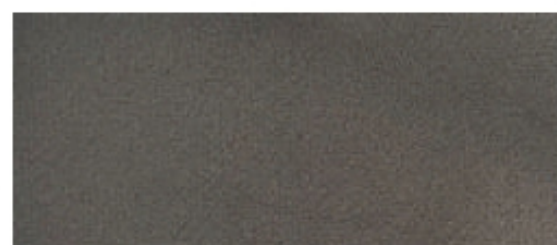
MENORCA 94 BLUE



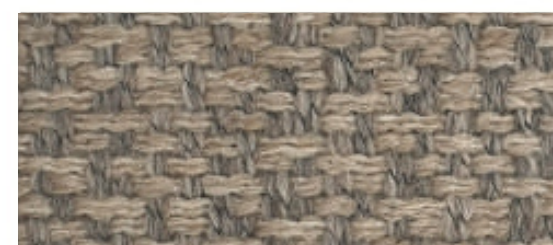
SEVEN 49 NAVY



SEVEN 10 LIVER



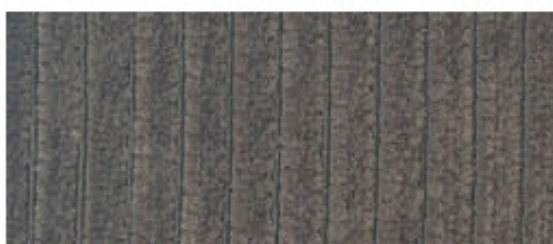
SEVEN 65 GRAY



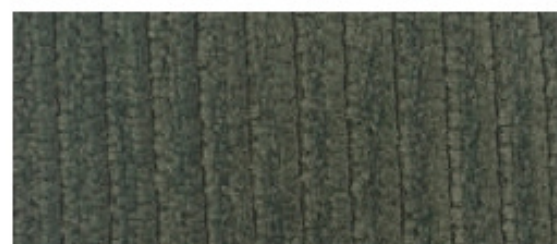
MENORCA 16 BEIGE



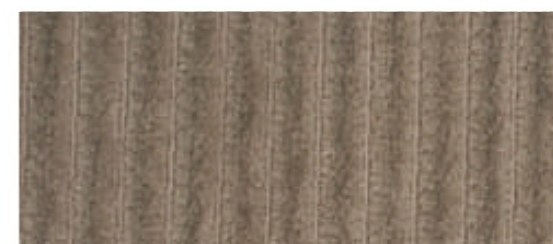
SICILY 316 CREME



SICILY 865 ANTRACITE



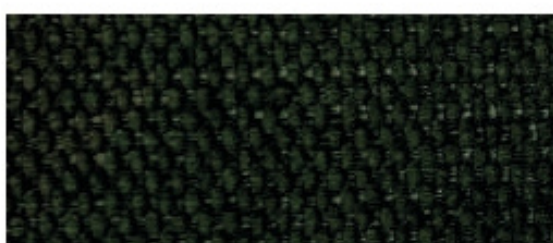
SICILY 907 FORREST



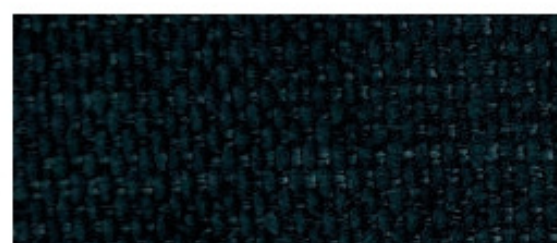
SICILY 298 LIND



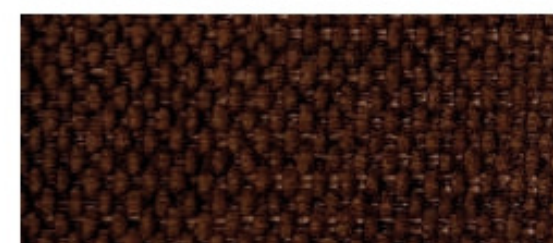
PONZA DARK BEIGE 24



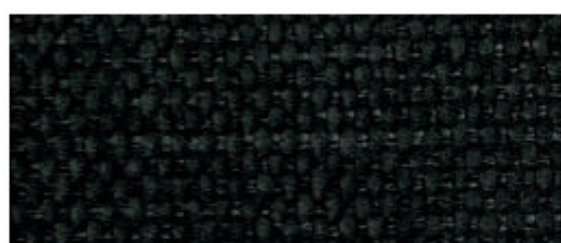
PONZA GREEN 17



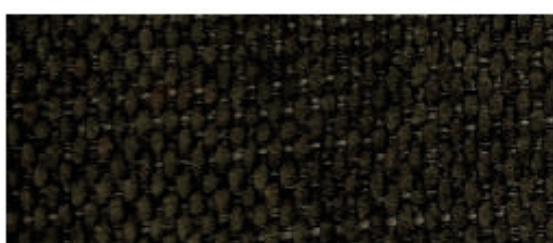
PONZA PETROL 14



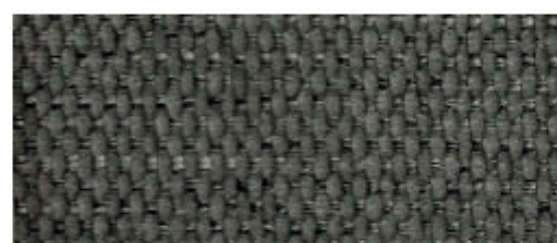
PONZA RUST 21



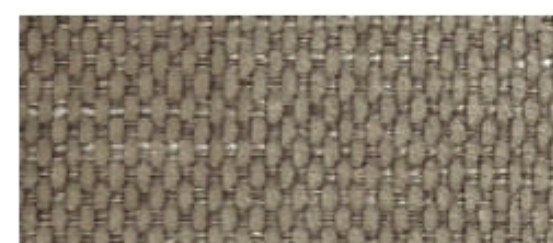
PONZA STONE 3



PONZATAUPE 23



PONZA ZINK 4



PONZA BEIGE 25

H O V D E N

OF NORWAY 1945

STOFF	FARGE	KOMPOSISJON	RENGJØRING	MARTINDALE
Emma/ Symfoni	Beige, White, Grey, Light grey	54% textured PES, 46% PES		27 000
Seven	Grey 65, Liver 10, Navy 49	100% PES		100 000
Sicily	Anthracite 865, Crème 316, Forest 907, Lind 298	100% PES		50 000
Capri	02 beige, 09 sand, 70 mint, 54 rust, 99 coal	100% PES		35 000
Elba	Natural 01, Ashgrey 40, Scarlet 141, Bronze 116, Hunter 156, Denim 153, Zinc 167, Thyme 206	100% PES		100 000
Corsica	Beige 03, Aqua 33	100% PES		35 000
Menorca	Beige 16, Blue 77	70% resirkulert PES, 30% PES		35 000
Ponza	Beige 25, Dark beige 24, Taupe 23, Rust 21, Green 17, Petrol 14, Zink 4, Stone 3	100% PES		80 000

Alle tekstiler er vaskbare på 30°C, må ikke i tørketrommel. Alle tekstiler samme pris.