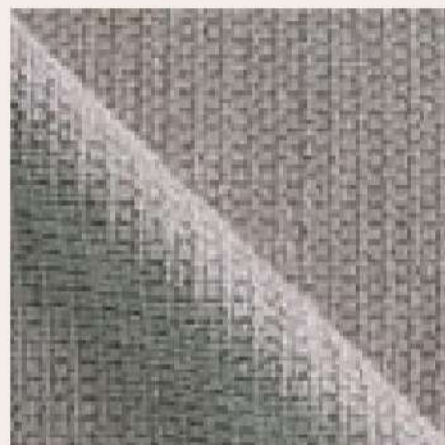




LIFESTYLE  
FURNITURE  
SINCE 1978

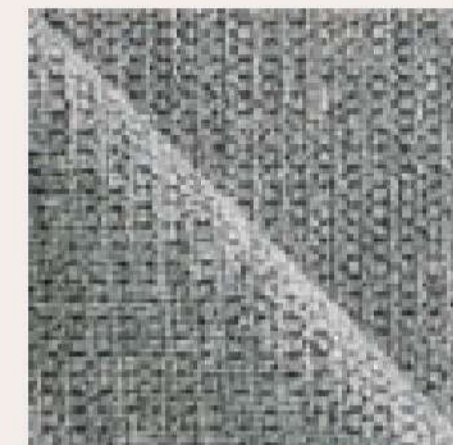
## Stofgruppe 1 - Mito



188 Naturel



096 Ashgrey



182 Steel



183 Dolphin



398 Slate



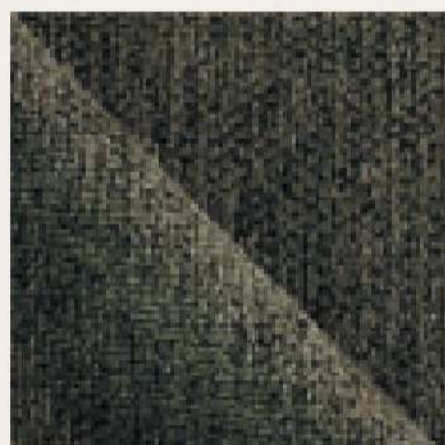
078 Dark Grey



702 Brass



382 Mustard



371 Hunter



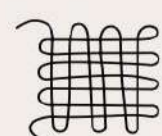
035 Blue



109 Cinammon



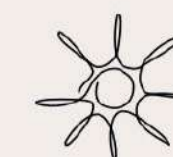
380 Burgundy



Frontside: 90% Polyester, 10% Nylon  
Backside: 100% Polyester



Martindale: 50.000



Lightfastness: 4/5



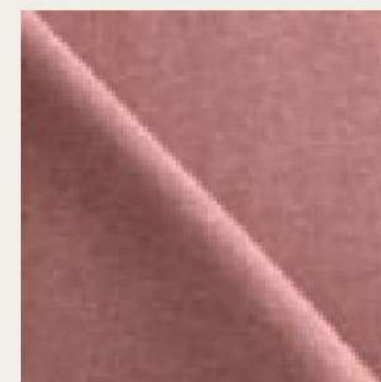


LIFESTYLE  
FURNITURE  
SINCE 1978

## Stofgruppe 1 - Soil



384 Lilac



409 Blush



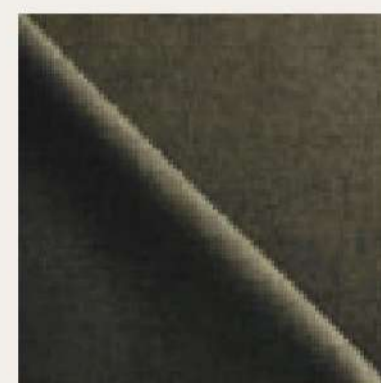
439 Carmine



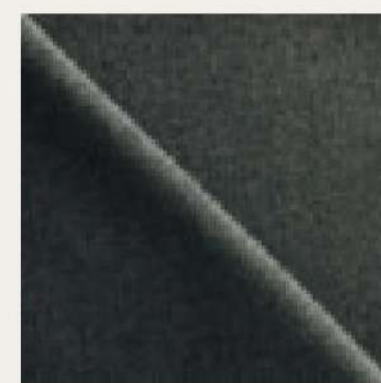
062 Hazel



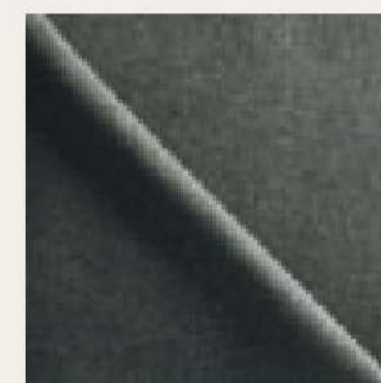
174 Ocre



028 Army



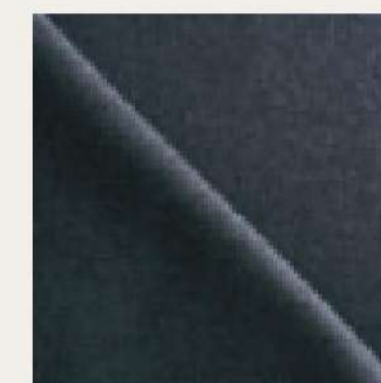
371 Hunter



099 Eucalyptus



029 Sage



193 Indigo



098 Turquoise



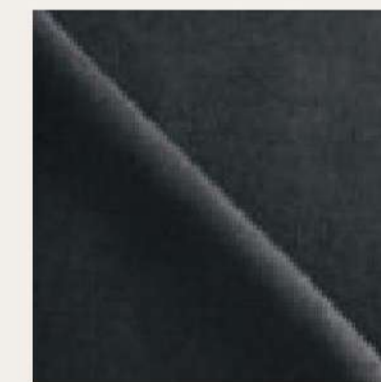
171 Niagara



182 Steel



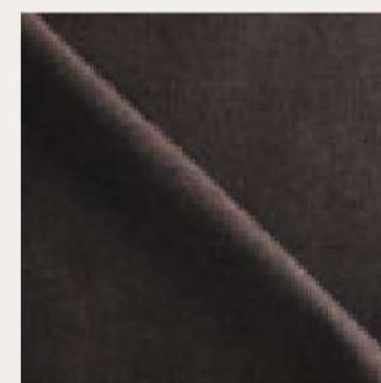
184 Zinc



079 Antrasit



078 Dark Grey



059 Coffee



227 Sepia



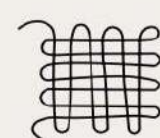
069 Taupe



180 Liver



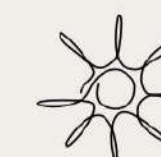
188 Natural



60% Recycled PET,  
40% Polyester



Martindale: >100.000



Lightfastness: 4-5





LIFESTYLE  
FURNITURE  
SINCE 1978



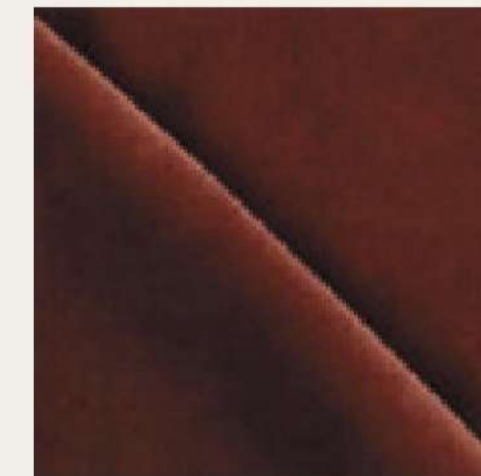
## Stofgruppe 2 - Adore



226 Blossom



409 Blush



434 Copper



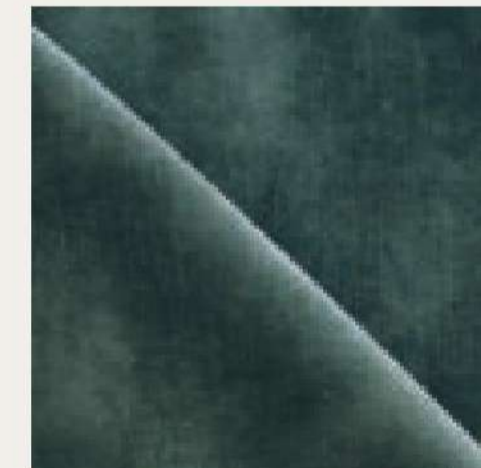
008 Gold



078 Dark Grey



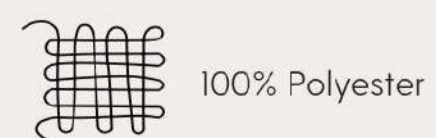
036 Petrol



171 Niagara



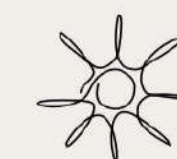
371 Hunter



100% Polyester



Martindale: 88.000



Lightfastness: 4-5





LIFESTYLE  
FURNITURE  
SINCE 1978



## Stofgruppe 2 - Air



079 Antracite



184 Zinc



182 Steel



096 Ash Grey



396 Pearl



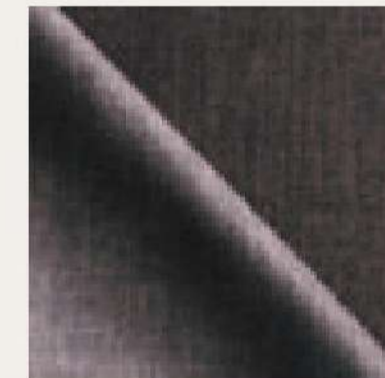
166 Ecrú



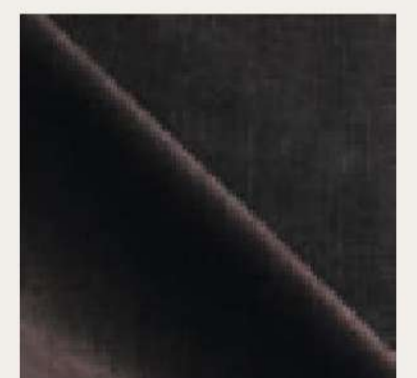
180 Liver



187 Clay



433 Cacao



368 Wenge



013 Blue



438 Forest



573 Thyme



008 Gold



174 Ocre



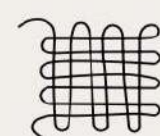
434 Copper



021 Wine Red



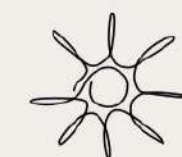
097 Magnolia



100% Polyester and  
recycled polyester



Martindale: 95.000



Lightfastness: 4-5





LIFESTYLE  
FURNITURE  
SINCE 1978



## Stofgruppe 2 - Alpine



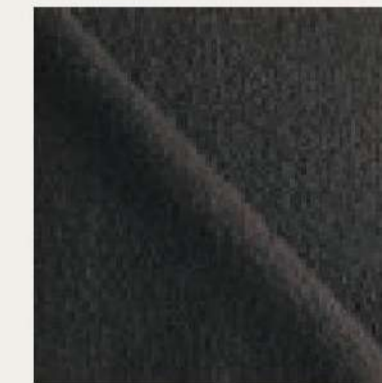
574 Bronze



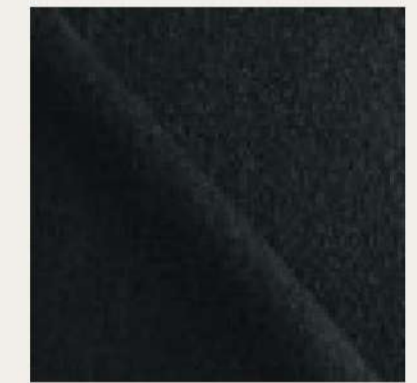
062 Hazel



045 Brown



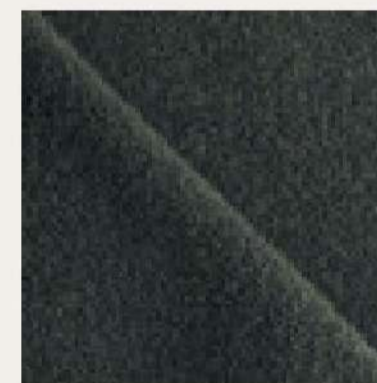
058 Dark Brown



104 Onyx



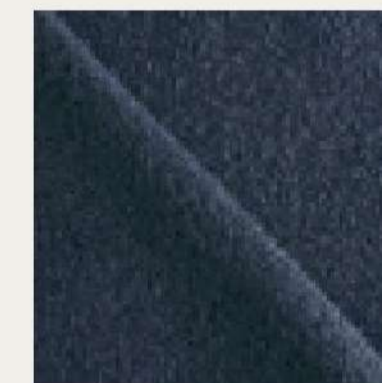
573 Thyme



438 Forest



283 Denim



193 Indigo



075 Grey



182 Steel



052 Beige



188 Natural



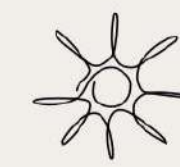
049 Ivory



96% Polyester,  
4% Polyacrylic



Martindale: >75 000



Lightfastness: 5



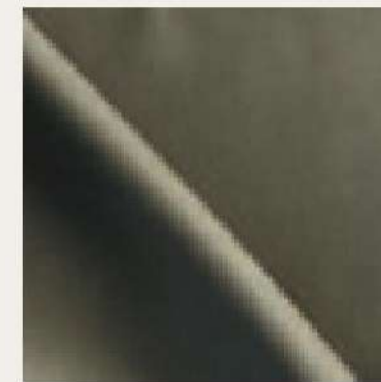


LIFESTYLE  
FURNITURE  
SINCE 1978

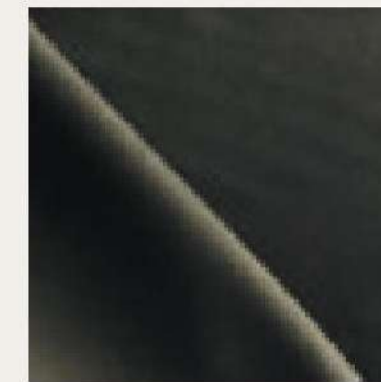
## Stofgruppe 2 - Challenger



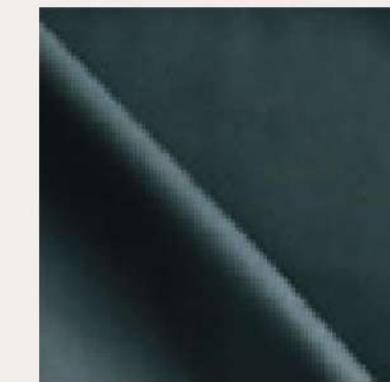
573 Thyme



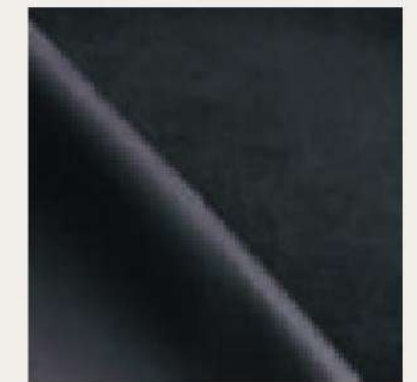
028 Army



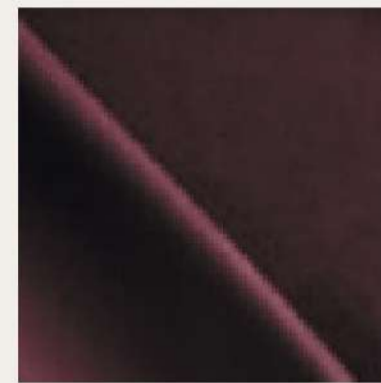
438 Forest



306 Teal



037 Dark Blue



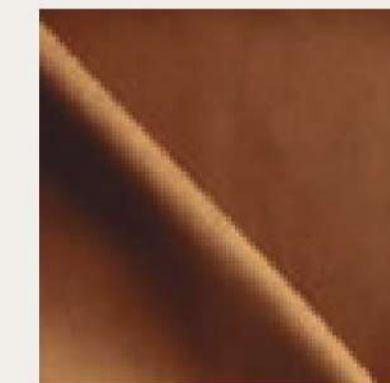
602 Cabernet



380 Burgundy



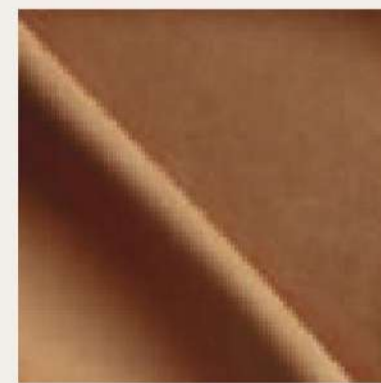
106 Scarlet



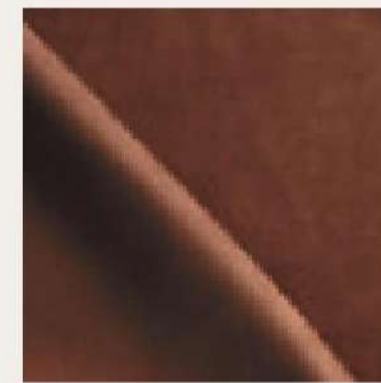
109 Cinnamon



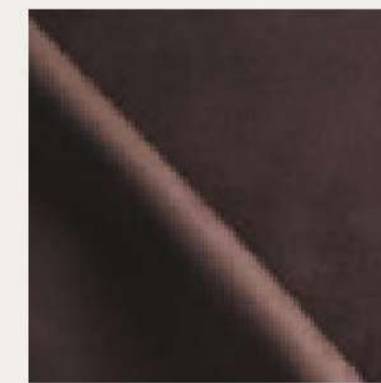
382 Mustard



574 Bronze



062 Hazel



059 Coffee



069 Taupe



180 Liver



190 Desert



047 Nature



429 Shell



072 Light Grey



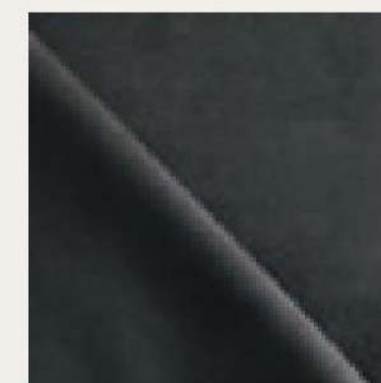
182 Steel



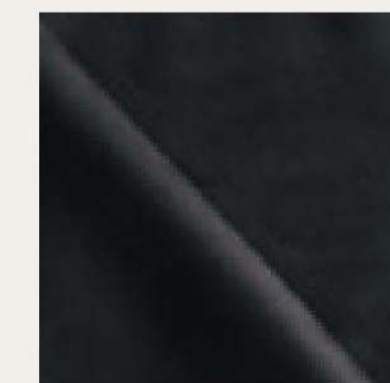
184 Zinc



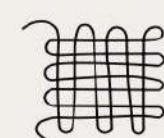
075 Grey



101 Graphite



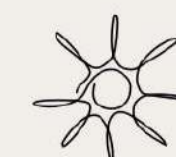
104 Onyx



100% Polyester



Martindale: 70.000



Lightfastness: 3-4





LIFESTYLE  
FURNITURE  
SINCE 1978

## Stofgruppe 2 - Earth



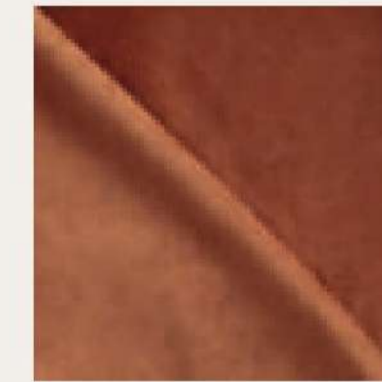
097 Magnolia



602 Cabernet



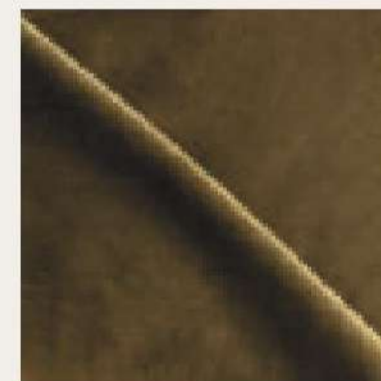
380 Burgundy



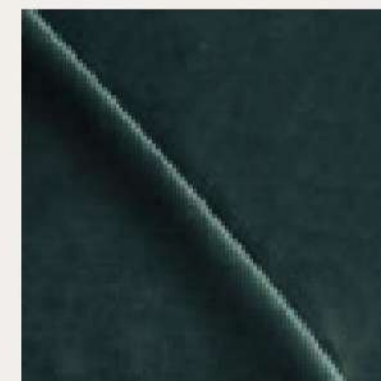
434 Copper



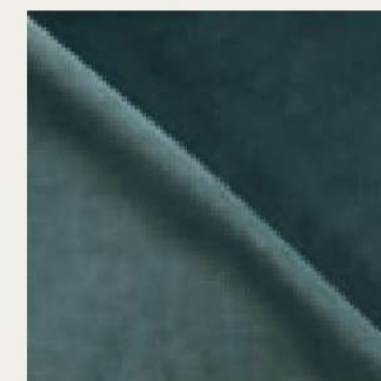
382 Mustard



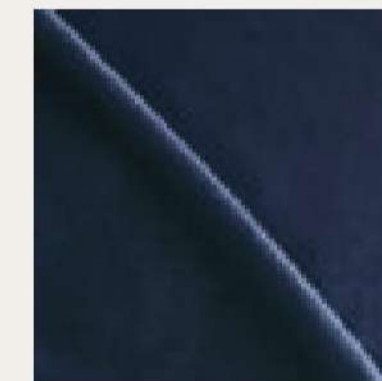
028 Army



438 Forest



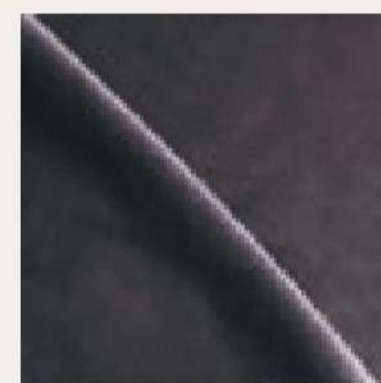
306 Teal



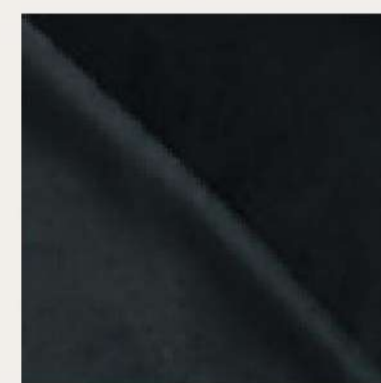
193 Indigo



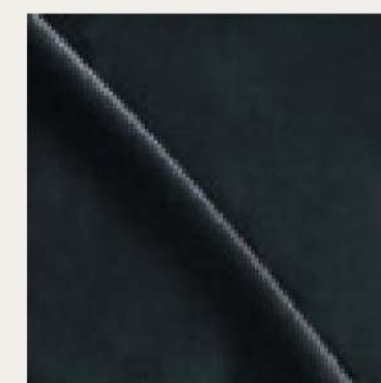
375 Plumb



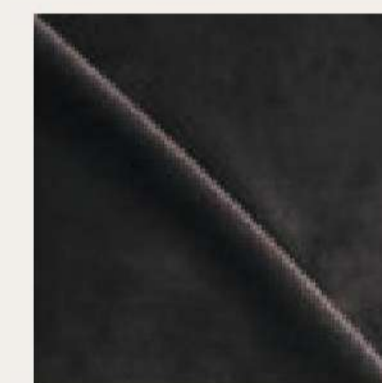
398 Slate



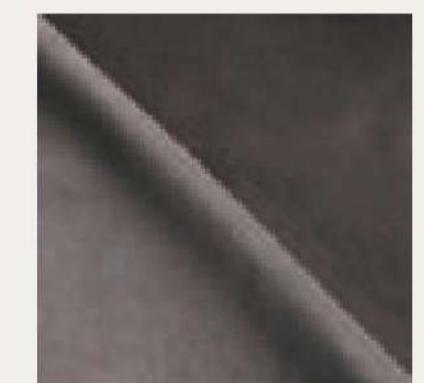
104 Onyx



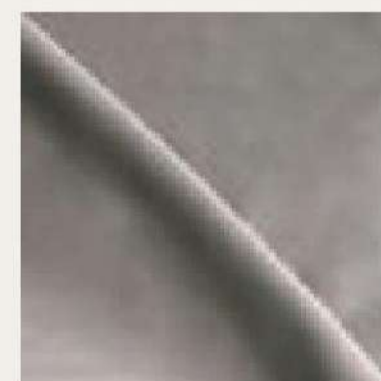
101 Graphite



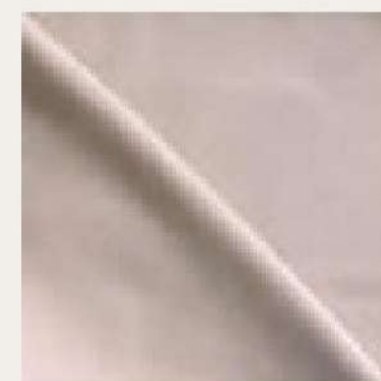
274 Wood



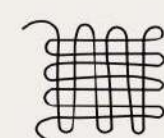
180 Liver



370 Shitake



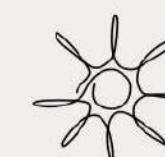
052 Beige



100% recycled PET



Martindale: >100.000



Lightfastness: 5





LIFESTYLE  
FURNITURE  
SINCE 1978

## Stofgruppe 2 - Fusion



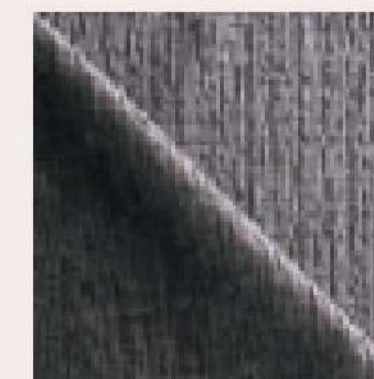
429 Shell



190 Desert



182 Steel



274 Wood



079 Anthracite



101 Graphite



573 Thyme



028 Army



382 Mustard



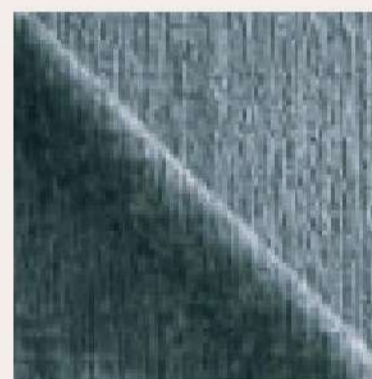
434 Copper



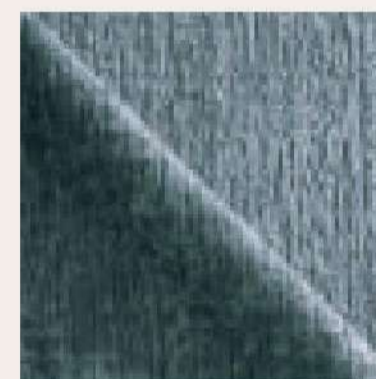
409 Blush



439 Carmine



171 Niagara



193 Indigo







LIFESTYLE  
FURNITURE  
SINCE 1978

## Stofgruppe 2 - Home



072 Light Grey



052 Beige



180 Liver



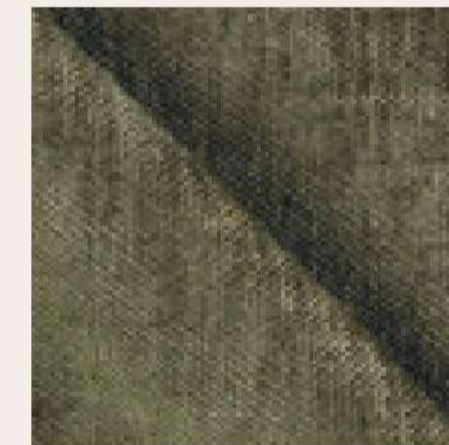
182 Steel



083 Curry



573 Thyme



028 Army



171 Niagara



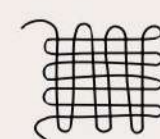
306 Teal



371 Hunter



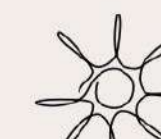
101 Graphite



100% Polyester



Martindale: >100.000



Lightfastness: 4/5





LIFESTYLE  
FURNITURE  
SINCE 1978

## Stofgruppe 2 - Lido



018 Purple



022 Signal Red



020 Tulip



023 Orange



015 Yellow



038 Light Green



031 Oliven



040 Light Blue



036 Petrol



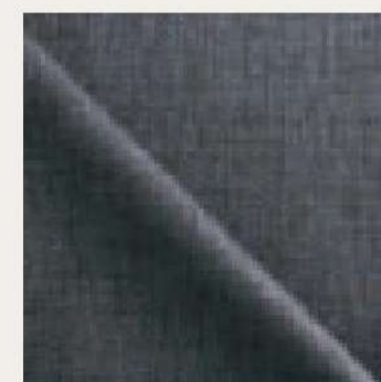
037 Dark Blue



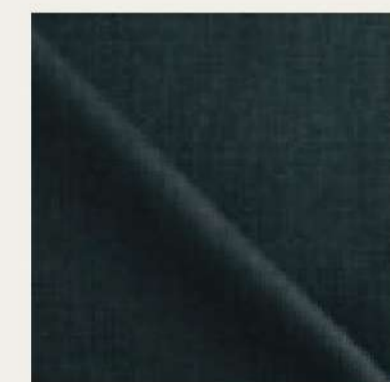
072 Light Grey



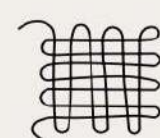
075 Grey



078 Dark Grey



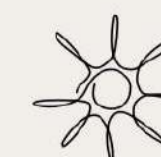
079 Anthracite



100% Polyester



Martindale: 105.000



Lightfastness: 6





LIFESTYLE  
FURNITURE  
SINCE 1978

## Stofgruppe 2 - Lido



009 Sand



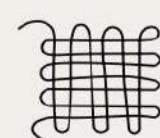
072 Light Grey



391 Moss Green



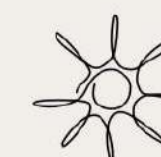
078 Dark Grey



100% Polyester



Martindale: 84.000



Lightfastness: 6+





LIFESTYLE  
FURNITURE  
SINCE 1978

## Stofgruppe 3 - Brema



409 Blush



382 Mustard



099 Eucalyptus



172 Turtle



096 Ashgrey



072 Light Grey



052 Beige



069 Taupe



171 Niagara



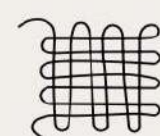
075 Grey



013 Blue



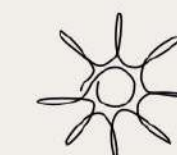
082 Char Coal



39% Polyester, 39% Polyacrylic,  
14% Cotton, 8% Wool



Martindale: 25.000



Lightfastness: 4-5





LIFESTYLE  
FURNITURE  
SINCE 1978



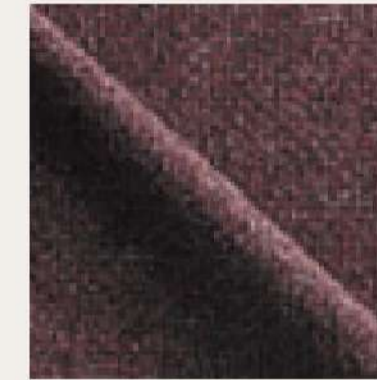
## Stofgruppe 3 - Society



382 Mustard



109 Cinnamon



106 Scarlet



283 Denim



036 Petrol



306 Teal



172 Turtle



399 Cream



370 Shitake



069 Taupe



274 Wood



011 Espresso



101 Graphite



075 Grey



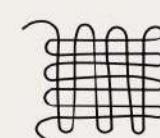
182 Steel



180 Liver



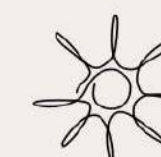
188 Natural



100% Recycled Polypropylene



Martindale: 45.000



Lightfastness: 5





LIFESTYLE  
FURNITURE  
SINCE 1978

## Stofgruppe 3 - Bull



075 Grey



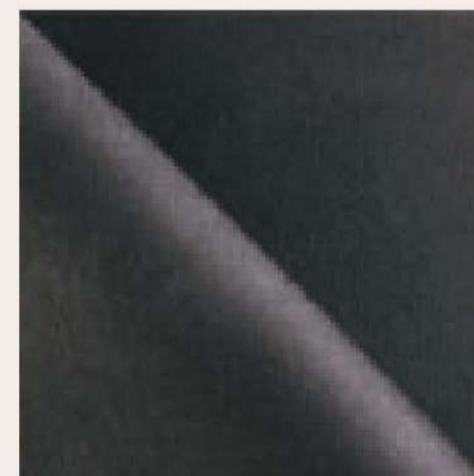
573 Thyme



438 Forest



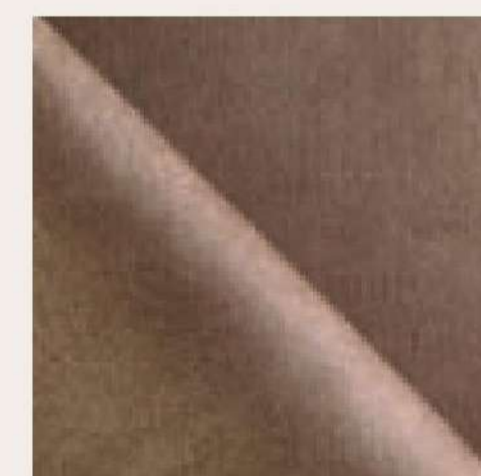
101 Graphite



079 Antracite



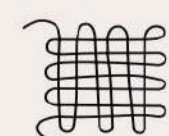
171 Niagara



179 Camel



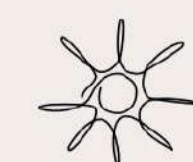
180 Liver



Frontside: 96% Polyester, 4% Polyurethane Fibre  
Backside: 100% Leather



Martindale: 32.000



Lightfastness: 4/5





LIFESTYLE  
FURNITURE  
SINCE 1978

## Lædergruppe 32 - Balder



001 White



072 Light Grey



071 Stone



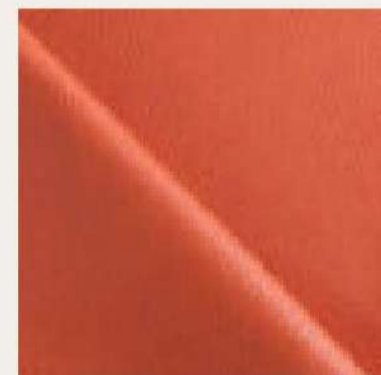
075 Grey



089 Black



015 Yellow



023 Orange



014 Red



021 Wine Red



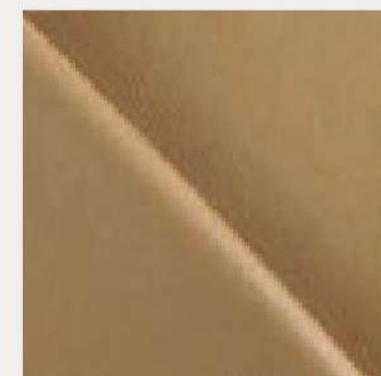
058 Dark Brown



002 Cognac



008 Gold



061 Nougat



050 Cream



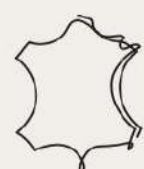
033 Dark Green



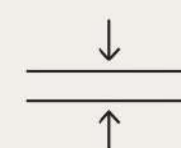
013 Blue



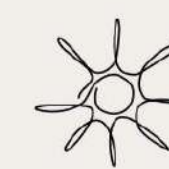
036 Petrol



Semi-aniline Balder is a slightly corrected semi-aniline leather with a soft touch. The hide is printed with a rustic structure which accentuates the character of the leather.



Thickness: 1,3 mm-1,5 mm



Lightfastness: 4-5





LIFESTYLE  
FURNITURE  
SINCE 1978

## Lædergruppe 33 - Club Royal



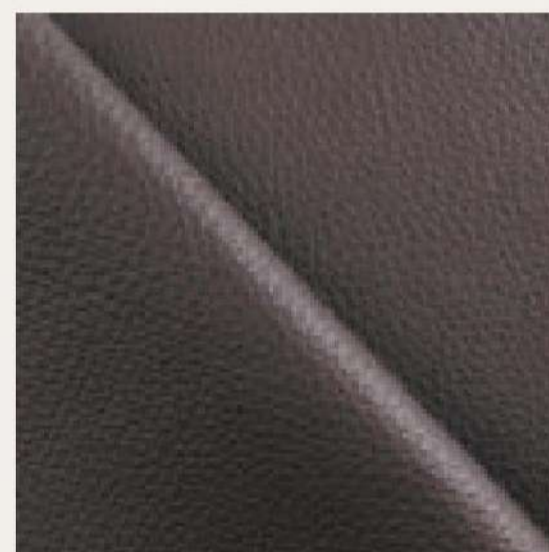
001 White



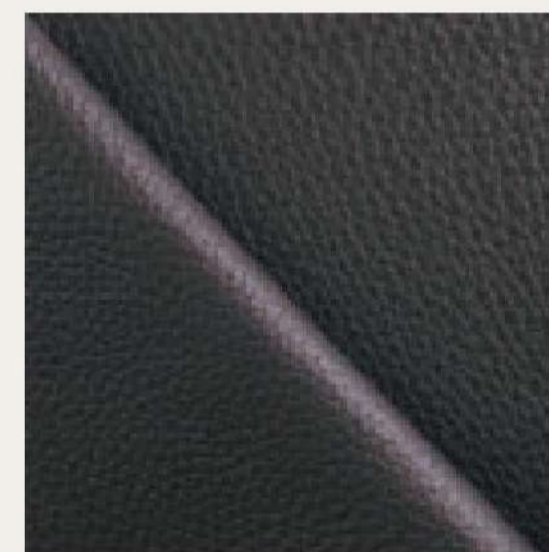
069 Taupe



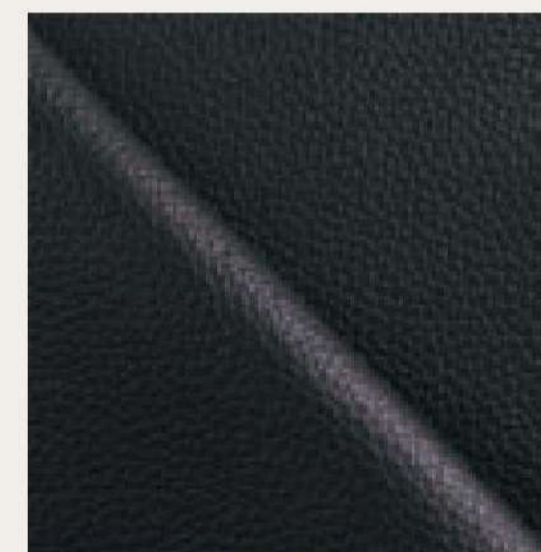
055 Light Brown



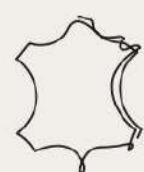
045 Brown



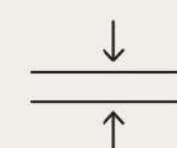
078 Dark Grey



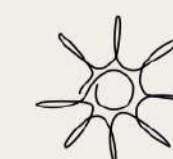
089 Black



Semi-aniline Club Royal is an aniline dyed leather coated with a thin finish in order to protect the colour. The leather is smooth and is able to "breathe" and absorb humidity. Being a full grain leather it has a natural surface.



Thickness: 1,6 mm-1.8 mm



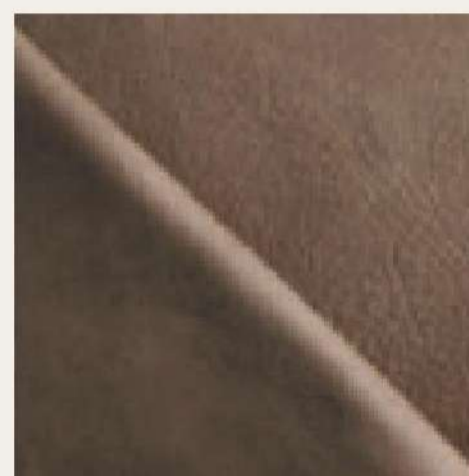
Lightfastness: 5



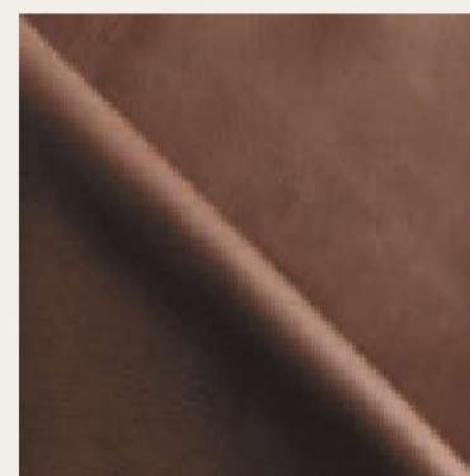


LIFESTYLE  
FURNITURE  
SINCE 1978

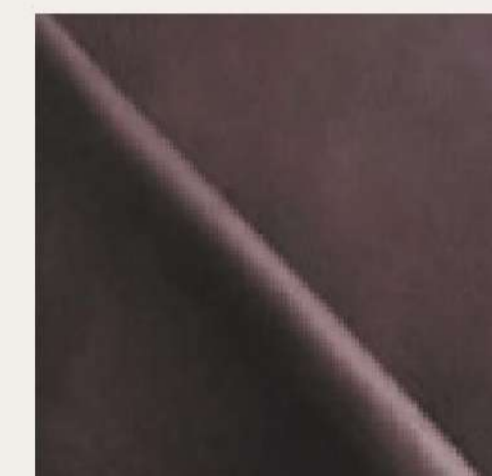
## Lædergruppe 33 - Reno



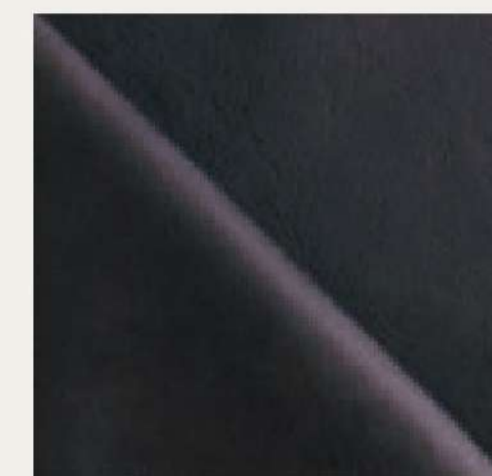
187 Clay



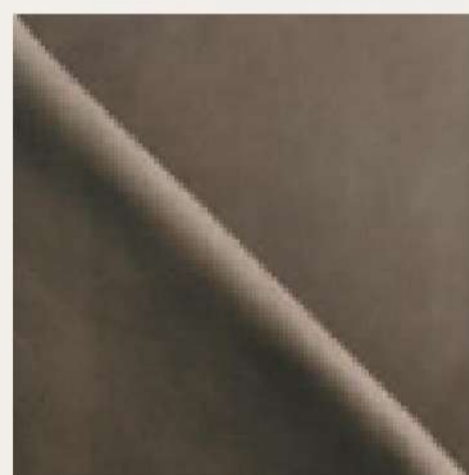
002 Cognac



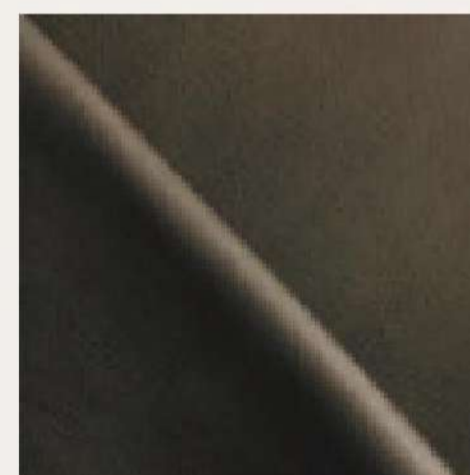
045 Brown



392 Moro



071 Stone



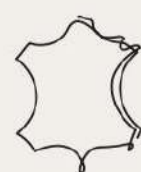
031 Olive



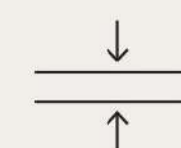
182 Steel



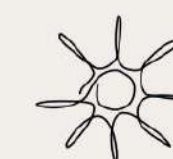
291 Nero



Reno is leather of exotic hides, chromium-tanned, lightly tanned with vegetable ingredients thereafter, dyed in barrel and polished. The specific effect is achieved by finishing the leather with paraffin, oil and aniline.



Thickness: 1,2 - 1,4 mm



Lightfastness: 3