

# METAL FARVER & FINISH

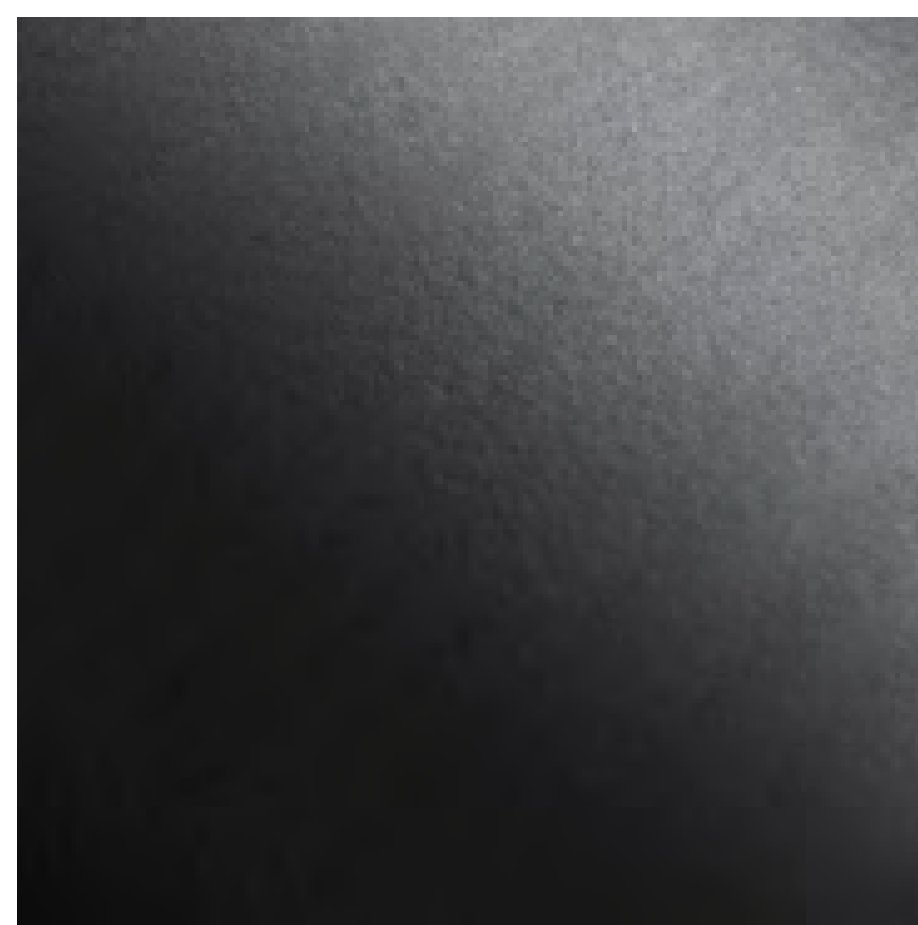
*Kun til SYDNEY (bolte/bøsninger er altid messing)*

---



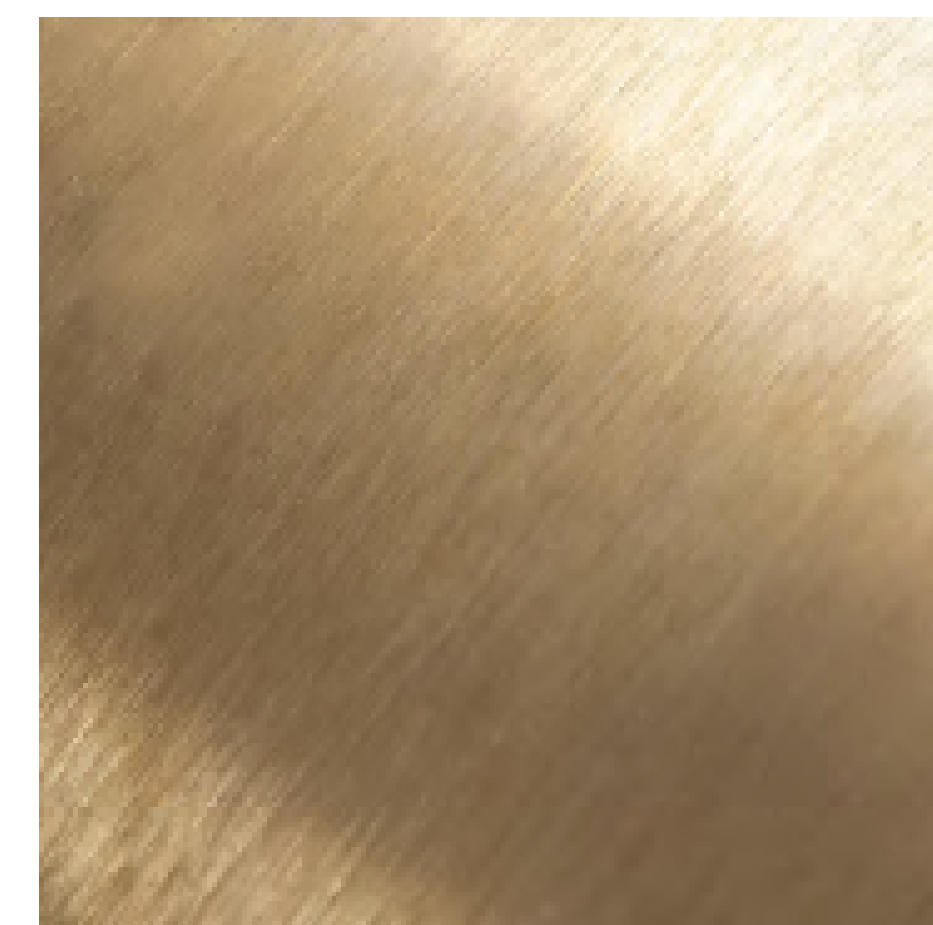
## **Vintage kobber**

Bendetalje med rustik "nubret"  
Vintage kobber look.



## **Sortmalet stål**

Bendetalje udført i  
glat matsort stål.



## **Messing**

Bendetalje i børstet  
messing.