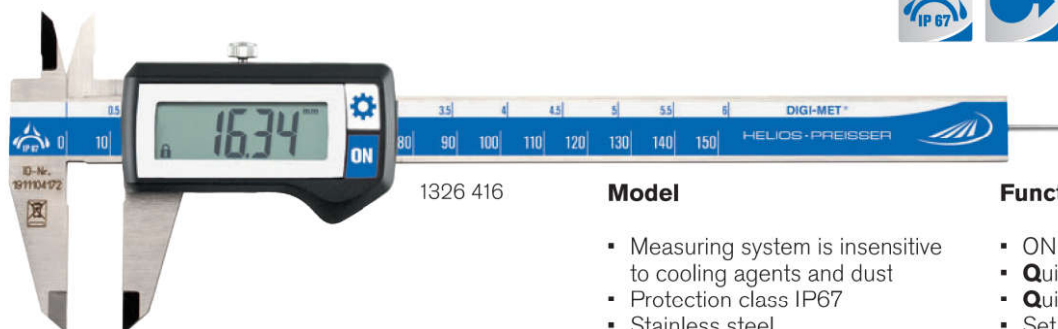




## 1326 DIGI-MET® Pocket calipers IP67



1326 416

### Model

- Measuring system is insensitive to cooling agents and dust
- Protection class IP67
- Stainless steel
- LCD display 11 mm
- DIN 862
- Housing and operating keys have an excellent chemical resistance
- Locking screw
- Inside cross points
- Four way measurement with measuring ranges 150 and 200 mm
- Three way measurement with measuring range 300 mm

### Functions

- ON / OFF
- Quick-Start**
- Quick-Lock** (key lock)
- Set to zero at any point
- mm / inch switching
- PRESET-Function (setting a numerical value)

### Delivery

- Plastic case



Video  
electronic

	Measuring range		Jaw length		Reading		Error limit	Depth gauge	Order no.
	mm	inch	mm	inch	mm	inch			
▪	0 - 150	0 - 6	40	1.6	0.01	.0005	0.03	round 1.5	1326 416
▪	0 - 150	0 - 6	40	1.6	0.01	.0005	0.03	rectangular	1326 417
▪	0 - 200	0 - 8	50	2.0	0.01	.0005	0.03	rectangular	1326 418
▪	0 - 300	0 - 12	65	2.5	0.01	.0005	0.03	none	1326 422
<b>With carbide-tipped measuring jaws</b>									
▪	0 - 150	0 - 6	40	1.6	0.01	.0005	0.03	round 1.5	1326 914

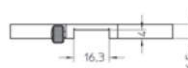
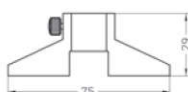
### Accessories

Battery, 3V-Lithium, CR 2032

### Order no.

0220 704

## 0220 Additional depth measuring base



### Model

- Stainless steel
- Bridge length: 75 mm
- Dimensions: 75 x 6.5 mm



Order no.

0220 705