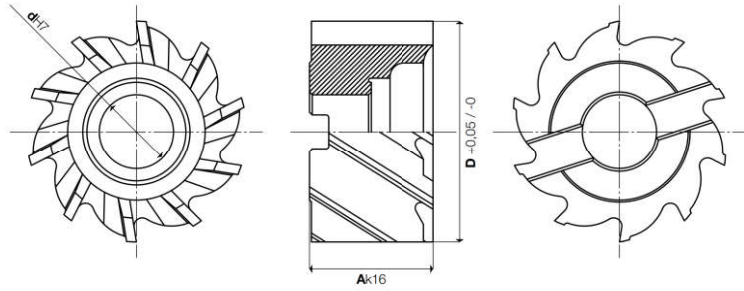
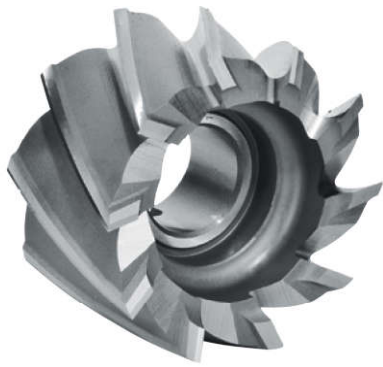


HSS-PM HSS-PM Line

Serie/Series

02105

Frese a **FINIRE** con cava di trascinamento trasversale
Finishing milling with transversal driving slot



COATING Skin	$\lambda^{\circ}S$ 32	N	UNI 3903 DIN 1880 ISO 2586	Z8÷16
------------------------	--------------------------	---	----------------------------------	--------------

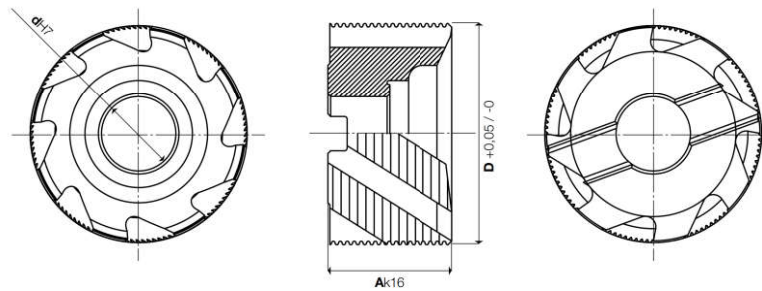
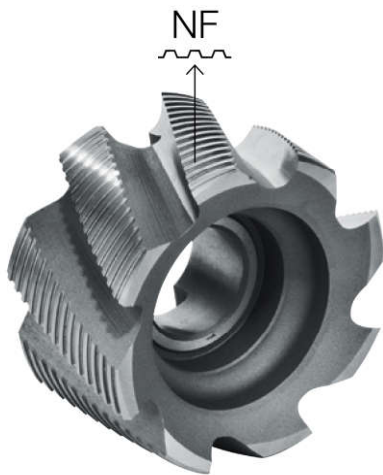
Cod. Art.	X-85 (PM Co. 8,5%)	COATED	D +0,05 -0	Ak16	dh7	Z
021050400	CM	CMX	40	32	16	8
021050500	CM	CMX	50	36	22	8
021050630	CM	CMX	63	40	27	8
021050800	CM	CMX	80	45	27	10
021051000	CM	CMX	100	50	32	12
021051250	CM	CMX	125	56	40	14
021051600	CM	CMX	160	63	50	16



Serie/Series

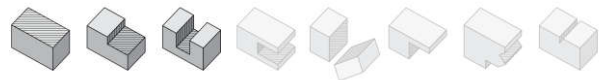
02110

Frese a **SEMIFINIRE** con cava di trascinamento trasversale
Semifinishing cutters end mills with transversal driving slot



COATING Skin	$\lambda^{\circ}S$ 28	NF	UNI 3903 DIN 1880 ISO 2586	Z6÷14
------------------------	--------------------------	----	----------------------------------	--------------

Cod. Art.	X-85 (PM Co. 8,5%)	COATED	D +0,05 -0	Ak16	dh7	Z
021100400	CM	CMX	40	32	16	6
021100500	CM	CMX	50	36	22	6
021100630	CM	CMX	63	40	27	8
021100800	CM	CMX	80	45	27	8
021101000	CM	CMX	100	50	32	10
021101250	CM	CMX	125	56	40	12
021101600	CM	CMX	160	63	50	14



MATERIALI LAVORABILI / WORKPIECE MATERIALS

serie	TITANIO TITANIUM	HRSA HRSA	ACCIAI INOSSIDABILI STAINLESS STEELS	MATERIALI NON FERROSI NON FERROUS MATERIALS	LEGHE LEGGERE LIGHT ALLOYS	ACCIAI STEELS	GHISE CAST IRON
02105	●	●	●	○	○	●	●
02110	●	●	●	○	○	●	●

● consigliata/recommended ○ accettabile/acceptable ○ non consigliata/not recommended