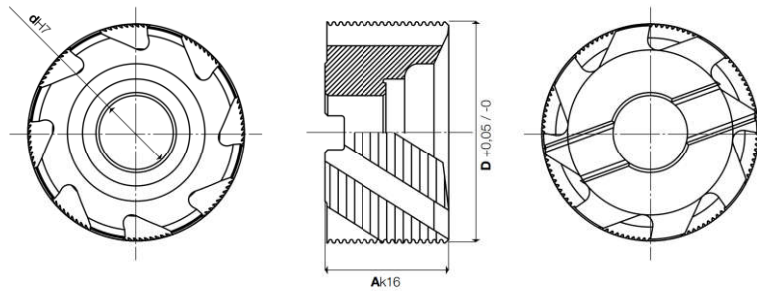


Serie/Series

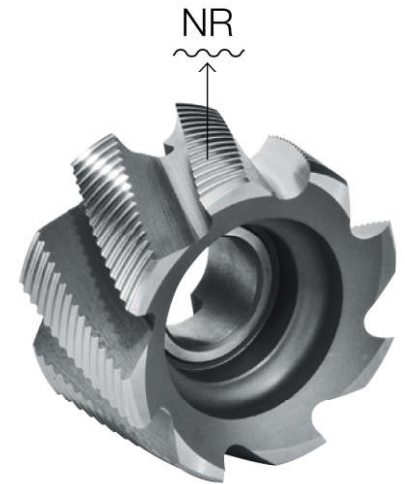
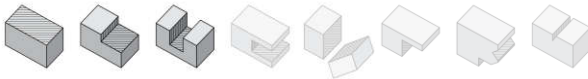
02110

Frese a **SGROSSARE**
con cava di trascinamento trasversale
Roughing cutters with transversal driving slot



COATING	λ° s	NR	UNI 3903 DIN 1880 ISO 2586	Z6÷14
Skin	28			

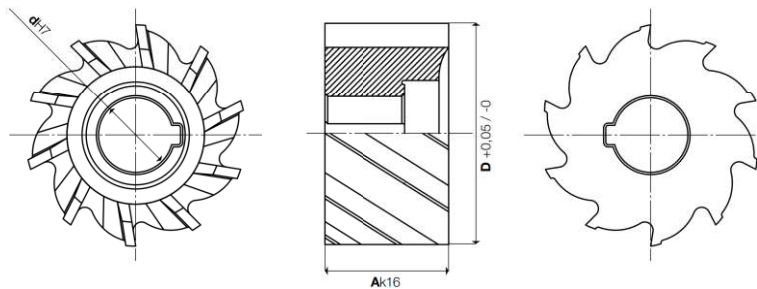
Cod. Art.	X-85 (PM Co 8,5%)	COATED	D +0,05 -0	Ak16	dH7	Z
021100401	CM	CMX	40	32	16	6
021100501	CM	CMX	50	36	22	6
021100631	CM	CMX	63	40	27	8
021100801	CM	CMX	80	45	27	8
021101001	CM	CMX	100	50	32	10
021101251	CM	CMX	125	56	40	12
021101601	CM	CMX	160	63	50	14



Serie/Series

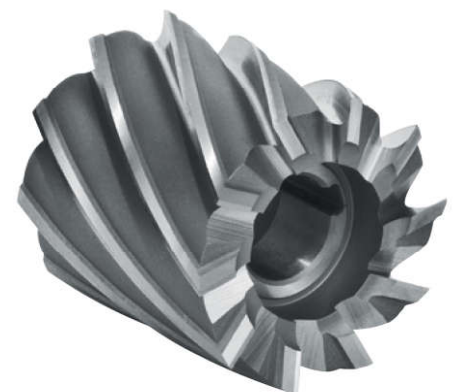
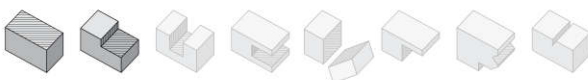
02115

Frese a **FINIRE** con spacco longitudinale
Finishing milling cutters with transversal driving slot



COATING	λ° s	N	DIN 841 ISO 2586	Z8÷16
Skin	32			

Cod. Art.	X-85 (PM Co 8,5%)	COATED	D +0,05 -0	Ak16	dH7	Z
021150300	CM	CMX	30	30	13	8
021150350	CM	CMX	35	35	16	8
021150400	CM	CMX	40	20	16	8
021150401	CM	CMX	40	40	16	8
021150500	CM	CMX	50	25	22	8
021150501	CM	CMX	50	50	22	8
021150600	CM	CMX	60	30	27	8
021150601	CM	CMX	60	60	27	8
021150750	CM	CMX	75	35	27	10
021150751	CM	CMX	75	75	27	10
021150900	CM	CMX	90	35	27	12
021151100	CM	CMX	110	35	32	14
021151300	CM	CMX	130	35	40	14
021151500	CM	CMX	150	40	40	16



MATERIALI LAVORABILI / WORKPIECE MATERIALS

serie	TITANIO TITANIUM	HRSA HRSA	ACCIAI INOSSIDABILI STAINLESS STEELS	MATERIALI NON FERROSI NON FERROUS MATERIALS	LEGHE LEGGERE LIGHT ALLOYS	ACCIAI STEELS	GHISE CAST IRON
02110	●	●	●	○	○	●	●
02115	●	●	●	○	○	●	●

● consigliata/recommended ● accettabile/acceptable ○ non consigliata/not recommended