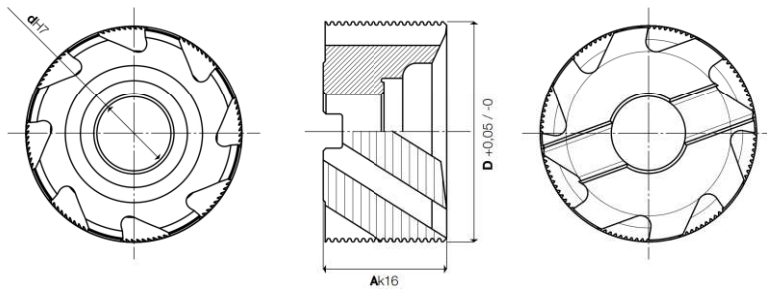


# HSS-PM HSS-PM Line

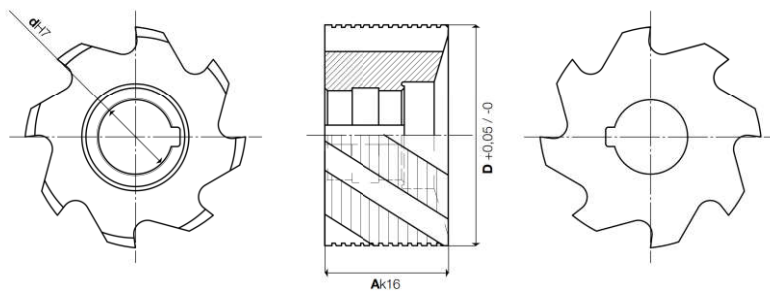
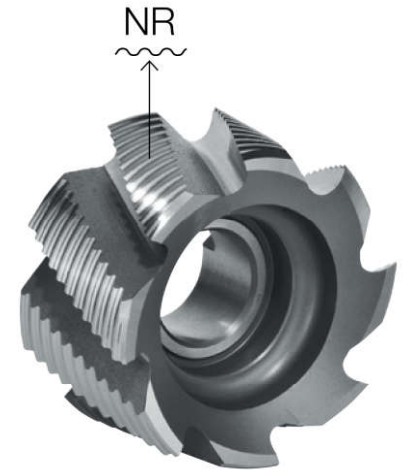
## Serie/Series 02125

Frese a **SGROSSARE** con cava di trascinamento trasversale  
Roughing cutters with transversal driving slot



COATING <b>Skin</b> Inox	$\lambda^{\circ}$ s 28	NR	UNI 3903 DIN 1880 ISO 2586	<b>Z6÷14</b>
--------------------------------	---------------------------	----	----------------------------------	--------------

Cod. Art.	X-85 (PM Co 8,5%)	COATED	D +0,05 -0	Ak16	dH7	Z
021250401	CM	CMX	40	32	16	6
021250501	CM	CMX	50	36	22	6
021250631	CM	CMX	63	40	27	8
021250801	CM	CMX	80	45	27	8
021251001	CM	CMX	100	50	32	10
021251251	CM	CMX	125	56	40	12
021251601	CM	CMX	160	63	50	14



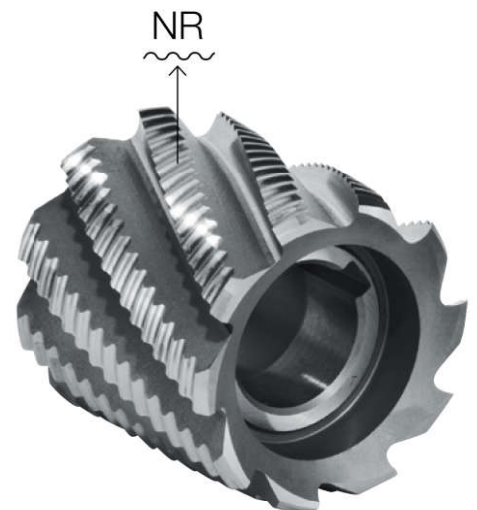
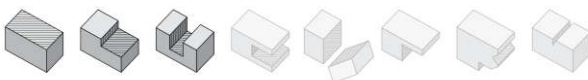
## Serie/Series

## 02130

Frese a **SGROSSARE** con spacco longitudinale  
Roughing cutters with longitudinal keyway

COATING <b>Skin</b> Inox	$\lambda^{\circ}$ s 28	NR	DIN 841 ISO 2586	<b>Z6÷10</b>
--------------------------------	---------------------------	----	---------------------	--------------

Cod. Art.	X-85 (PM Co 8,5%)	COATED	D +0,05 -0	Ak16	dH7	Z
021300401	CM	CMX	40	40	16	6
021300501	CM	CMX	50	50	22	8
021300601	CM	CMX	60	60	27	8
021300751	CM	CMX	75	75	27	10



### MATERIALI LAVORABILI / WORKPIECE MATERIALS

serie séries	TITANIO TITANIUM	HRSA HRSA	ACCIAI INOSSIDABILI STAINLESS STEELS	MATERIALI NON FERROSI NON FERROUS MATERIALS	LEGHE LEGGERE LIGHT ALLOYS	ACCIAI STEELS	GHISE CAST IRON
02125	●	●	●	○	○	●	●
02130	●	●	●	○	○	●	●

● consigliata/recommended    ● accettabile/acceptable    ○ non consigliata/not recommended