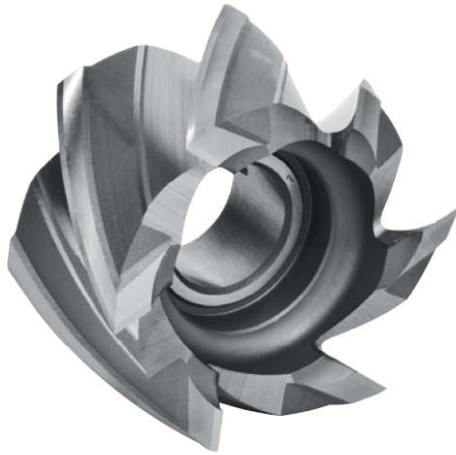
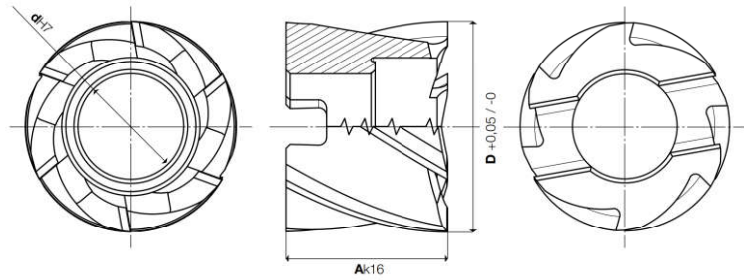


HSS-PM HSS-PM Line

Serie/Series

02135

Frese a **FINIRE** con cava di trascinamento trasversale
Finishing milling cutters with transversal driving slot



COATING Skin Alu	$\lambda^\circ \sigma$ 40	W	UNI 3903 DIN 1880 ISO 2586	Z4÷6
-------------------------------	------------------------------	---	----------------------------------	------

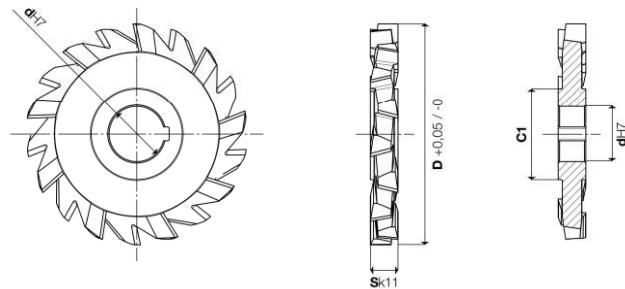
Cod. Art.	M-TK (HSS-E)	X-85 (PM Co 8,5%)	COATED	D +0,05 -0	Ak16	dH7	Z
021350400 AM	CM	CMX		40	32	16	4
021350500 AM	CM	CMX		50	36	22	4
021350630 AM	CM	CMX		63	40	27	4
021350800 AM	CM	CMX		80	45	27	6
021351000 AM	CM	CMX		100	50	32	6



Serie/Series

04105

Frese a disco a tre tagli elicoidali alternati
Side and face milling cutters **Staggered teeth**

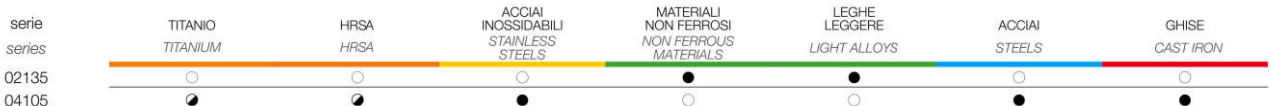


COATING Skin	H	UNI 3905A DIN 885A ISO 2587	Z16÷38
------------------------	---	-----------------------------------	--------

Cod. Art.	M-TK (HSS-E)	X-85 (PM Co 8,5%)	COATED	D +0,05 -0	Sk 11	C1	dH7	$\lambda^\circ s$	Z
041051040 AM	CM	CMX		50	4	26	16	20	16
041051050 AM	CM	CMX		50	5	26	16	20	16
041051060 AM	CM	CMX		50	6	26	16	20	16
041051070 AM	CM	CMX		50	7	26	16	15	16
041051080 AM	CM	CMX		50	8	26	16	15	16
041051090 AM	CM	CMX		50	9	26	16	15	16
041051100 AM	CM	CMX		50	10	26	16	15	16
041052040 AM	CM	CMX		63	4	33	22	20	18
041052050 AM	CM	CMX		63	5	33	22	15	18
041052060 AM	CM	CMX		63	6	33	22	15	18

→ continua alla pagina successiva / continued on next page

MATERIALI LAVORABILI / WORKPIECE MATERIALS



● consigliata/recommended ● accettabile/acceptable ○ non consigliata/not recommended