

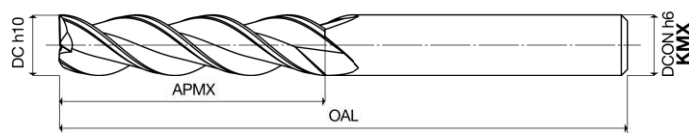
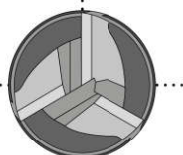
Series

40150

Frese a tre taglienti
Gole lappate
Three flute end mills
Polished flutes



Z3



✗
on request
Coating

✓
Quality UOP

W
Execution

$\lambda^{\circ}S$
45
Helix

W on request

Length

Cod. Art.	DC h10	APMX	OAL	DCON h6	Z
401500300 KM	3	7	57	6	3
401500400 KM	4	8	57	6	3
401500500 KM	5	10	57	6	3
401500600 KM	6	16	57	6	3
401500700 KM	7	16	63	8	3
401500800 KM	8	16	63	8	3
401500900 KM	9	19	72	10	3
401501000 KM	10	22	72	10	3
401501200 KM	12	26	83	12	3
401501400 KM	14	26	83	14	3
401501600 KM	16	32	92	16	3
401501800 KM	18	32	92	18	3
401502000 KM	20	38	104	20	3

parametri tecnici a pag. / for technical parameters see page 274



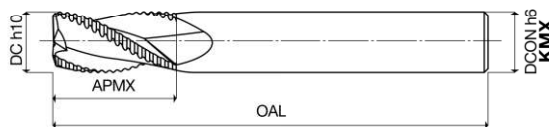
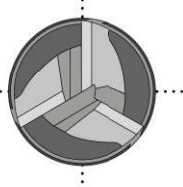
Series

40170

Frese a sgrassare
Gole lappate
Roughing end mills
Polished flutes



Z3



✗
on request
Coating

✓
Quality UOP

NRW
Execution

$\lambda^{\circ}S$
30
Helix

W on request

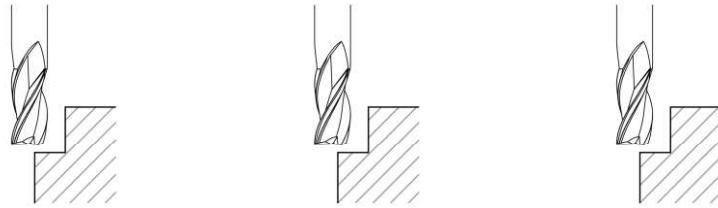
Length

Cod. Art.	DC h10	APMX	OAL	DCON h6	Z
401700600 KM	6	16	57	6	3
401700700 KM	7	16	63	8	3
401700800 KM	8	16	63	8	3
401700900 KM	9	19	72	10	3
401701000 KM	10	22	72	10	3
401701200 KM	12	26	83	12	3
401701400 KM	14	26	83	14	3
401701600 KM	16	32	92	16	3
401701800 KM	18	32	92	18	3
401702000 KM	20	38	104	20	3
401702500 KM	25	45	125	25	3

parametri tecnici a pag. / for technical parameters see page 274



Parametri di taglio / Cutting parameters



Materiali Materials		Contornatura Light Shouldering ap = 1,5ø ae = 0,15ø		Slottin Contornatura Light Shouldering ap = 1,5ø ae = 0,15ø		Contornatura Light Shouldering ap = 1,5ø ae = 0,5ø	
Serie Series		43105 - 43110* 43120** - 44105		40150 - 40170		43505	
Gruppo e descrizione Group and description		Vc (m/min.)		Vc (m/min.)		Vc (m/min.)	
		NON RIVESTITA UNCOATED	Skin^{up}	NON RIVESTITA UNCOATED	NON RIVESTITA UNCOATED	NON RIVESTITA UNCOATED	Skin^{up}
Ghisa Cast Iron	Grigia e sferoidale Grey and spheroidal	80 - 90	110 - 120	-	-	80 - 90	110 - 120
	Basso contenuto di C Low Carbon content	90 - 100	120 - 130	-	-	90 - 100	120 - 130
	Medio contenuto di C Medium Carbon content	90 - 100	120 - 130	-	-	90 - 100	120 - 130
Acciaio Steel	Basso legato Low alloy	80 - 90	110 - 120	-	-	80 - 90	110 - 120
	Alto legato High alloy	70 - 80	90 - 100	-	-	70 - 80	90 - 100
	Acciaio da stampi e utensili Tool and die Steel	50 - 60	70 - 80	-	-	50 - 60	70 - 80
	Alluminio non legato Unalloyed aluminium	-	-	90 - 100	-	-	-
Materiali non ferrosi - Leghe leggere Non ferrous materials - Light alloys	Alluminio Si < 6% si < 6% aluminium	-	-	90 - 100	-	-	-
	Materiali termoplastici Thermoplastic materials	-	-	120 - 130	-	-	-
Acciaio temprato Hardened Steel	Rame/Ottone Copper/Brass	90 - 100	120 - 130	-	-	90 - 100	120 - 130
	≤ 54 HRC	-	-	-	-	-	-

DC	Avanzamento fz mm/tagliante FEED mm/tooth	
2	0,005	0,005
2,5	0,007	0,007
3	0,010	0,010
3,5	0,012	0,012
4	0,015	0,015
4,5	0,016	0,016
5	0,020	0,020
5,5	0,022	0,022
6	0,025	0,023
8	0,035	0,026
10	0,045	0,030
12	0,056	0,040
16	0,080	0,060
20	0,100	0,080

*series 43110 fz consigliato | recommended -50%

**series 43120 fz consigliato | recommended -70%

40150	40170	43105	43110*	43120**	43505	44105
○	○	○	●	●	●	●
○	○	○	●	●	●	●
●	●	●	●	●	●	●
○	○	●	●	●	●	●

● consigliato/recommended

● accettabile/acceptable

○ non consigliato/not recommended