

Depth Calipers

BLUE-LINE Depth Caliper
DIN 862

- stainless steel, hardened, vernier and scale matt chrome finish
- surfaces finely ground, with fixing screw
- mono block vernier, reading 0.05 mm
- straight bar, series 221530, type "C"
- straight and 90°-hook bar, reversible, series 221630, type "A"
- straight and with 2-hook bar, reversible, series 221830, type "B"
- exchangeable tip, reversible, series 221730, type "G"
- fixed tip, series 221718, type "F"



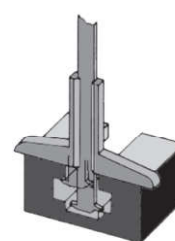
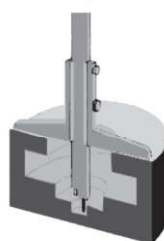
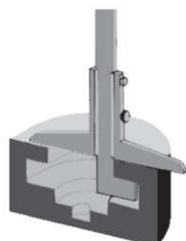
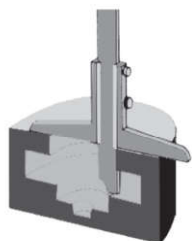
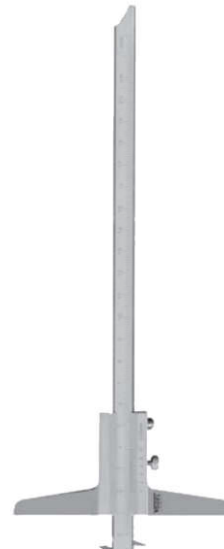
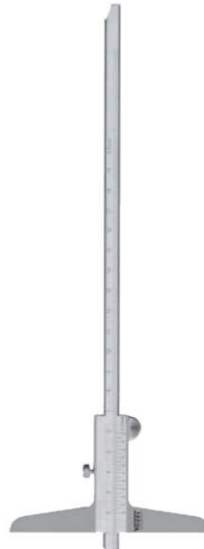
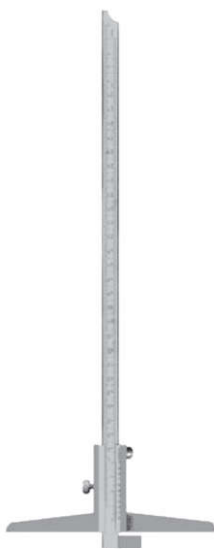
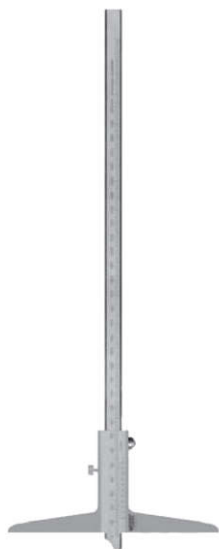
ART^N 221718 type F

ART^N 221532 type C

ART^N 221632 type A

ART^N 221732 type G

ART^N 221832 type B



ART ^N type C	ART ^N type A	ART ^N type B	ART ^N type G	ART ^N type F	mm	mm	mm	KG	ART ^N CC
-	-	-	-	221718	80	0.05	50	0.065	2294001
221530	221630	221830	221730	-	150	0.05	100	0.100	2294001
221531	221631	221831	221731	-	200	0.05	100	0.125	2294001
221535	221633	-	221733	-	250	0.05	125	0.185	2294001
221532	221632	221832	221732	-	300	0.05	150	0.250	2294001
221533	221634	-	-	-	400	0.05	150	0.300	2294001
221534	221635	-	221735	-	500	0.05	150	0.325	2294001
221536	221636	-	-	-	500	0.05	250	0.550	2294001
221537	-	-	-	-	800	0.05	250	0.780	2294002
221538	-	-	-	-	1000	0.05	250	0.830	2294002