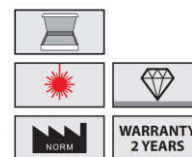


# Protractors

## BLACK-LINE® Protractor

- with fixing screw
- for standard mechanical engineering
- made of Dur-Aluminium, hardened with HRC63
- scratch-resistant, black anodized surface
- laser engraved, clear reading scale



ART NO	length of blades mm	arc-ø mm			ART NO CC
322511-2	120	80	0 - 180	0.045	3294511
322512-2	150	120	0 - 180	0.065	3294512
322513-2	200	150	0 - 180	0.100	3294513
322514-2	300	200	0 - 180	0.180	3294514
322515-2	500	300	0 - 180	0.410	3294515

## DIGI PLUS-LINE® Electr. Digital Bevel Protractor

- for high precision accuracy and safety reading
- LCD display with clear reading, digit height 10 mm
- stainless, hardened and fine ground
- On/Off button, with fixing screw
- zero setting at any position, with data hold function
- reading of values in display by 180° switchable
- incl. 1x 3 V battery (type CR2032, art. no.: 2002093), with operation manual



ART NO	length of blades mm	arc-ø mm					CC
320201	150	120	0 - 180	0.05	0.3	0.260	inclusive
320202	200	150	0 - 180	0.05	0.3	0.310	inclusive
320203	300	200	0 - 180	0.05	0.3	0.450	inclusive

## DIGI PLUS-LINE® Protractor (Skew Measure)

- for high precision accuracy and safety reading
- LCD display with clear reading, digit height 10 mm
- stainless, hardened and fine ground
- On/Off button, with fixing screw
- zero setting at any position, with data hold function
- reading of the values in the display from 10°-170°
- incl. 1x 3 V battery (type CR2032, art. no.: 2002093), with operation manual



Accessories can be found on page 205



ART NO	length of blades mm	arc-ø mm	angle graduation		ART NO CC
320581	150	100	10 - 170	0.235	3294511
320582	300	150	10 - 170	0.365	3294512
320583	400	200	10 - 170	0.660	3294513