



USER MANUAL



HG conveyor belt

Belt width: 50-60 cm

Length: 200-3000 cm

IMPROVING YOUR FUR BUSINESS

Model 2016

HG conveyor belt

	Topic	Page
1	Safety.....	3
2	Moving and lifting.....	5
3	Machine components	6
4	Setup and connection.....	9
5	Using the HG conveyor belt.....	11
6	Maintenance	12
7	FAQ.....	13
8	Technical data	14
9	Warranty conditions.....	15
10	EU Declaration of conformity	16

1 Safety

Please read the manual

Machine operators must read the manual thoroughly and receive training in the machine's functions before beginning to use it. If the operator is unaware of certain details, there is a risk of injury while operating the machine.

If any of the warning labels are peeling off, worn or damaged, making the symbol illegible, replace the label.

WARNING! High voltage



Before opening the electric panel, the power must be disconnected and locked to prevent accidental connection. The panel may only be opened by authorised personnel.

1.1 Application

- ◆ The machine may only be used industrially for transporting products such as animal skins and bodies.
- ◆ Operators must be over 18 years old and have normal mobility and physique.

1.2 Training

- ◆ Before commencing, operators must carefully read the instructions in this manual and have learned how to correctly operate the machine, possibly under the guidance of an experienced instructor.
- ◆ These instructions should focus on the following:
 - 1) The need to be careful and focused when working with the machine.
 - 2) The operator always being aware of what is happening around the machine.
- ◆ The operator being responsible for accidents or any dangerous situations that may arise in relation to other people.

- ◆ The key causes of accidents are:

- 1) Lack of concentration.
- 2) Inadequate knowledge of the machine on the part of the operator.

1.3 Position, space requirements etc.

- ◆ The machine must be placed indoors on a solid and level surface.
- ◆ When the machine is being operated there must be flicker-free and glare-free illumination of at least 300 lux.
- ◆ The area around the machine must be kept clear to avoid falls.
- ◆ Cables, pipes and hoses for the machine must be run in such a way that they do not represent a risk, e.g. outside passageways, above head height or in suitable cable trays on the floor.

1.4 Preparation

- ◆ When operating the machine, make sure you do not have loose clothing or dangling hair that could become entangled in the machine or its moving parts. You should also wear non-slip safety footwear to avoid the risk of slipping.
- ◆ Keep grease, oil and other consumables for machine maintenance in containers approved for the purpose, and out of reach of children and unauthorised persons.

1.5 Maintenance

The machine should be checked daily for visual faults, and cleaned around the rotating rollers.

Check the following by visual inspection:

- ◆ That all bolts, nuts etc. are securely tightened.
- ◆ That cables and wires are intact
- ◆ That the environment around the rollers is clean and the belt is running straight.

See section 7 for other machine maintenance instructions.

1.6 Disposal/dismantling

When disposing of the machine, you should contact the local product dealer to ensure the machine is dismantled and disposed of in the most environmentally friendly manner.

2 Moving and lifting

Use a pallet lifter or fork-lift to move/lift the machine.



Conveyor belts 4.5 metres or less in length can be lifted under the centre.

Belts from 4.5 to 6.0 metres in length must be supported at three points using suitable lifting equipment.

Conveyor belts over 6.0 metres in length are supplied in pieces and assembled on site.

Conveyor belts mounted using an inclined frame must be lifted under the frame.

If the conveyor belt is lifted using a crane, place the hoists where the legs are attached. Belts over 4.5 metres long must be lifted at three points.

During transportation, lashings must be placed where the legs attach to the frame. If the belt is lying over the side plates, edge protection must be used.

WARNING! Do not attempt to lift/move the machine manually or using equipment not suited to the task.

3 Machine components



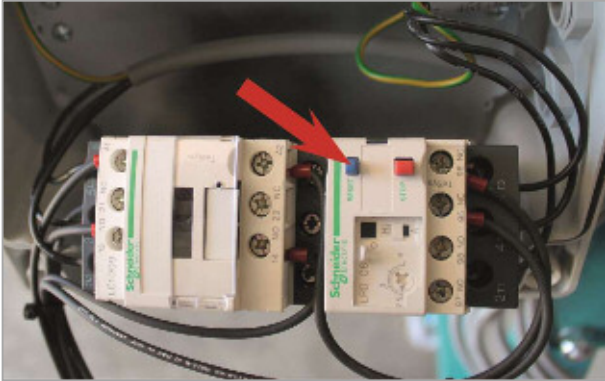
- 1 Control panel with motor protection
- 2 Emergency stop
- 3 Stop button
- 4 Start button
- 5 Power connector
- 6 Belt tightening and adjustment
- 7 Leg angle adjustment
- 8 Leg height adjustment
- 9 Belt adjustment



- 1 Control panel with motor protection
- 2 Emergency stop
- 3 Stop button
- 4 Start button
- 5 Power connector
- 6 Belt tightening and adjustment
- 7 Leg angle adjustment
- 8 Leg height adjustment
- 9 Belt adjustment

3.1 Control panel

All the machine's electrical functions are operated from the panel.



The panel contains the motor protection that protects the motor from overload. If the motor protection has tripped, open the panel via the four corner screws and reactivate by pressing the blue button.

If the motor protection repeatedly trips, the cause of the overload must be found and rectified. Contact Hedensted Group to request a service technician visit to find the cause.

WARNING! Before opening the electric panel, the power must be disconnected and locked to prevent accidental connection. The panel must not be opened by unauthorised personnel due to risk of injury or death.

3.2 Emergency stop

If the emergency stop is pressed in a danger situation, the belt stops immediately. Restart the machine by turning the button anticlockwise and pressing start.

WARNING! The emergency stop may only be used in danger situations.

3.3 Start button

Press the start button to start the belt.

If the belt is to be started by another machine, see under 'Setting up'.

3.4 Stop button

Press the stop button to stop the belt.

3.5 Power connection

The machine must be connected to a 16A CE connector with 3 x 400V + earth.

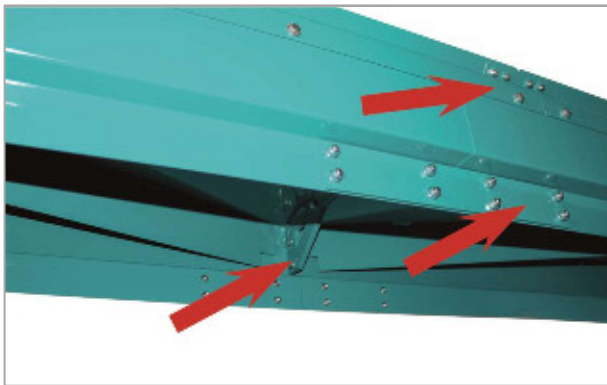
4 Setup and connection

Hedensted Group recommends that one of the company's trained technicians be used to set up the machine, to ensure optimum process conditions.

4.1 Setting up

The conveyor belt must be placed indoors on a solid, level floor. In accordance with EN 12465-1:2002, operating locations must have at least 300 lux illumination.

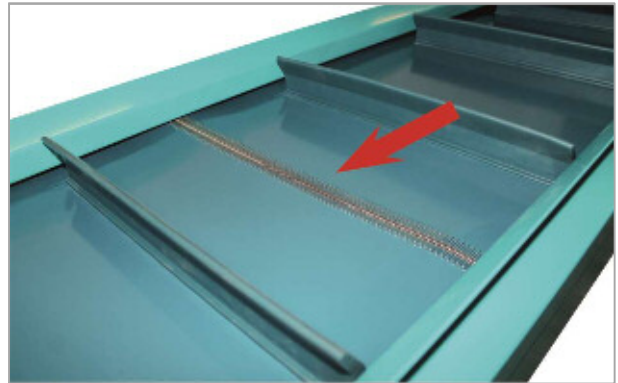
4.2 Assembly and installation



Conveyor belts over 6.0 metres in length are delivered in sections and assembled on site. Assemble the sections end-to-end and adjust such that the surfaces are level and in line. Attach six M8 bolts in the mounting plate inside the belt. Then attach the four reinforcement plates, two on each side. Repeat the above for each join between sections.



Conveyor belts over 6.0 meters long must be attached to the floor and adjusted so that each section above the legs is level and the entire length of the belt is in a straight line ± 2 mm. Conveyor belts less than 6.0 meters in length are not attached to the floor, but the sections must be adjusted so they are level.



Run the belt through the sections. Hold the joints together and insert the joint strip. Fold the strip in over the belt and cut 10mm from the fold.

Tighten and adjust the belt while it is running, so that it runs straight on the rollers.

Leg height and angle adjustment



Lift the conveyor belt off the ground using suitable lifting equipment. Or lay it on its side before adjusting the legs.

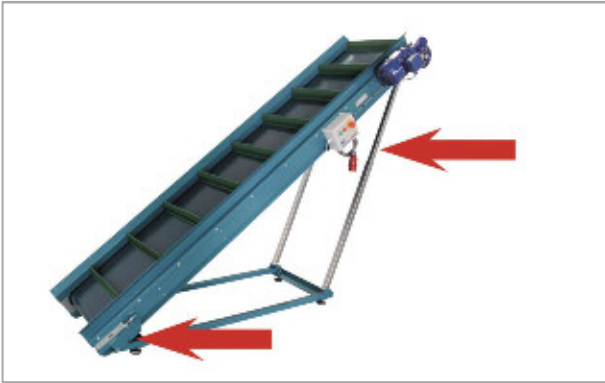
The angle and height of the conveyor belt can be adjusted at each set of legs. Adjust the angle at the top by moving the bottom bolt in the bracket to the hole that gives the leg the desired angle.

The height of the conveyor belt can also be adjusted at each set of legs. Adjust the height at the bottom of the leg by removing the bolt and moving the inner leg to the hole that gives the desired position.

If the belt has more than two sets of legs and has to ascend, it may be necessary to drill an extra hole in the middle legs.

BEFORE STARTING

Frame height and angle adjustment



Adjustment of the low end of the conveyor belt depends on whether it is fitted with feet or wheels underneath.

In the case of feet, attach the bottom frame in the first hole from the end on the belt unit.

In the case of wheels, attach the bottom frame in the third hole from the end on the belt unit.

The height of the conveyor belt, and hence the angle, can be adjusted via the telescopic legs. Support the high end using suitable lifting equipment. Remove the bolts at the middle of each leg. Lift the belt unit to the desired position and mount the bolts again.

4.3 Connection

Electricity:



The machine must be connected to 3 x 400 volts with earth (PE), with a 16A fuse. Connect using a CE connector or a power isolator for safe disconnection when the machine requires maintenance or repair.

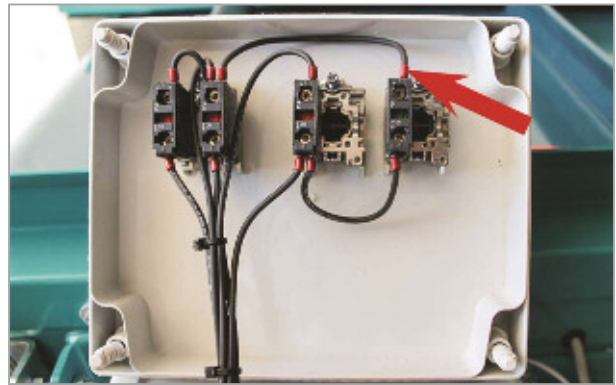
Check that the belt is running the right direction. The direction of the belt can be reversed by turning the phase-inverter in the plug using a screwdriver.

WARNING! Power cables must not lie loose on the floor, as this could pose a risk of injury.

4.4 Changing the start mode

WARNING! Before opening the electric panel, the power must be disconnected and locked to prevent accidental connection. The panel must not be opened by unauthorised personnel due to risk of injury or death.

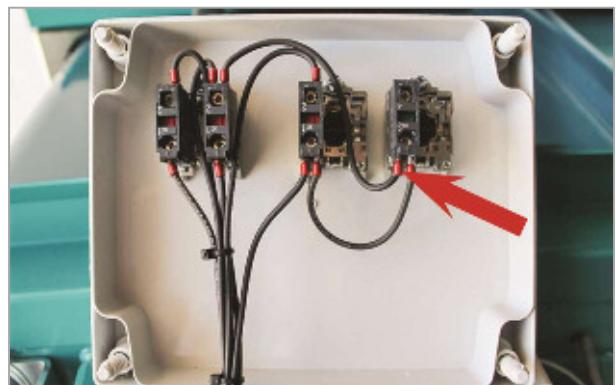
Manual start



The conveyor belt is to run as a standalone unit with manual start and stop using the control Panel. The control line and input power must be installed on opposite sides of the start switch.

Conveyor belts are supplied by Hedensted Group with this start mode.

Automatic start



The conveyor belt is to run as an automatic unit, with start and stop controlled from another machine. For example, controlled from a drum.

The control line and input power must be installed on the same side of the start switch.

5 Using the HG conveyor belt

Before beginning to use the HG conveyor belt, the points under setup and connection must be completed.

5.1 Starting the machine

1. The CE connector must be connected as described under setting up.
2. Turn the emergency stop anticlockwise to 'reset' the button.
3. Press start to start the belt.
4. The conveyor belt is now ready for operation

The belt will run until you press stop or emergency stop.

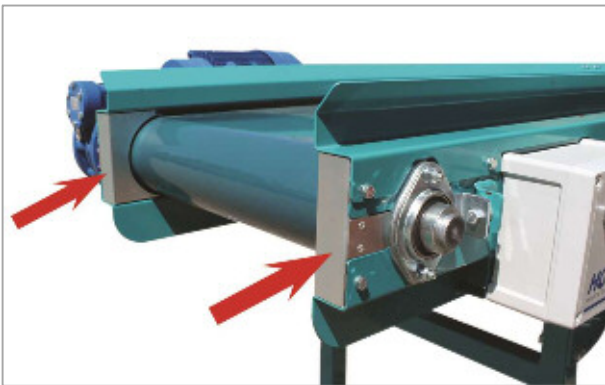
6 Maintenance and cleaning

WARNING! The power connector must be disconnected and locked before commencing maintenance work.

6.1. Normal cleaning

Use hand tools and a vacuum cleaner to remove dirt, blood, dust and wool on and around the machine.

If the dust layer on the engine cooling ribs is more than 0.5 mm thick, it must be removed.



Remove the protective caps on the rollers at least once a week and clean underneath.

Loosen the belt at least once a month so that the rollers can be cleaned. Accumulated dirt around the rollers will cause unstable operation and uneven belt movement, leading to a risk of belt damage from the protective screens.

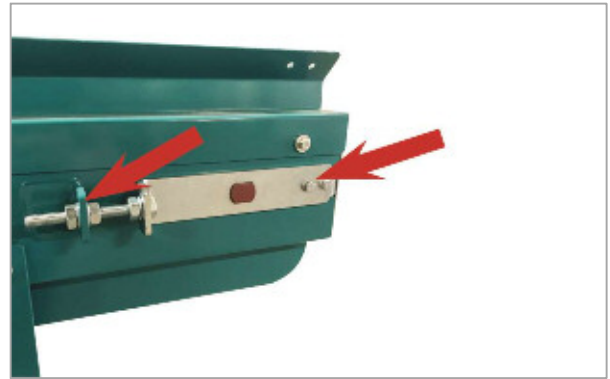
NB: A filter mask, protective goggles and hearing protection must be worn when blowing with compressed air.

6.2 Belt tightening and adjustment



In order for the belt to run straight during operation, it may be necessary to adjust the angle of the pull roller.

This can be done at the bearing on the opposite side of the gear motor. Loosen the two M8 nuts that hold the bearing plate. Adjust the angle and retighten the bearing.



In order for the belt to pull and run straight during operation, it may be necessary to adjust the position and angle of the turn roller.

This can be done at the opposite end of the gear motor on both sides. Loosen the two M6 bolts that hold the adjustment plate. Adjust the position and angle of the roller and retighten the plate.

6.3 Protective devices

Protective devices must not be removed except in connection with repair or service. This may only be done by a person with appropriate training.

Storage

Clean all dirt, blood, wool and hair from the machine, following the instructions for general maintenance before storage.

Store the machine in a clean, dry environment.

7 FAQ

Fault	Possible cause	Solution
Motor will not run.	The emergency stop has been pressed, no power connected.	<p>Check the power connection. Turn the emergency stop anticlockwise and press start.</p> <p>Activate the belt on the controlling machine and check that the belt is getting power. Turn the emergency stop anticlockwise if necessary.</p>
There is power at the plug but the motor will not operate.	The motor protection has tripped.	Open the control panel and reset the motor protection.
The RCCB trips when the machine is switched on.	There is a short circuit.	Contact your local electrician to have the motor checked.
The motor is running but the belt is motionless.	The load is too great for the given belt adjustment.	Tighten the belt.
The belt runs crooked during operation.	<p>The roller angles are incorrectly adjusted.</p> <p>The conveyor sections are not level and in a straight line.</p> <p>Dirt has accumulated around the rollers.</p>	<p>Adjust the angles of the pull and turn rollers.</p> <p>Adjust the legs and the sections as described under setting up.</p> <p>Loosen the belt and clean around the rollers and the inside of the belt.</p>

8 Technical data

Belt width: 500 mm

Dimensions and weight :	
Width:	78 cm
Length:	200-3000 cm
Height:	29-161 cm
Weight:	160-850 kg

Belt width: 600 mm

Dimensions and weight :	
Width:	88 cm
Length:	300 cm
Height:	157-240 cm
Weight:	180 kg

Electricity	
Voltage:	3 x 400V + PE
Fuse:	16 A
Connection:	16 A CEE

9 Warranty conditions

Warranty period

Hedensted Gruppen offers a 12-month warranty. The warranty period begins on the delivery date.

The warranty covers

- ◆ Components that have to be replaced or repaired due to material or manufacturing defects.
- ◆ The warranty does **not** cover wear parts and consumable parts such as:
 - Belt and bearings.

The following action voids the manufacturer's warranty

- ◆ Improper use of the machine.
- ◆ The machine is operated without following the user manual and the safety precautions.
- ◆ The machine is not maintained in accordance with the instructions, or obsolete spare parts are used.
- ◆ The machine is operated after a fault has been detected, making the fault costlier to repair than the original fault.

The owner's own insurance should cover

- ◆ Fire, burglary, theft and vandalism
- ◆ Water and frost damage.
- ◆ Damage caused by weather conditions.

Such damage is not covered by the manufacturer's warranty.

Approval of claims for compensation

The manufacturer's approval of a claim for compensation requires that the defective part is presented to the manufacturer or his authorised representative no later than two weeks after the damage occurred. Ownership of the damaged part(s) is transferred to the supplier of the new parts.

The guarantee only covers components. It does not cover

- ◆ Freight costs.
- ◆ Costs incurred in connection with waiting time, the machine owner's working hours and travel expenses.
- ◆ Operating losses and other subsequent costs.

Other

Prior to any repairs, the manufacturer must be contacted in order to agree on a procedure as per the warranty. If repairs have already begun or ended, it is too late to make a claim under the warranty.

These warranty provisions can be amended only by separate agreement.

10 EU Declaration of conformity

Hedensted Gruppen A/S
Vejlevej 15
DK-8722 Hedensted
Tel. (+45) 75 89 12 44
Mail: info@hedensted-gruppen.dk
www.hedensted-gruppen.dk

Hereby declares that:

HG conveyor belt
HG item no. 204308, 204310, 204311, 204312, 204314, 204318, M102265, M102267,
M102456, M102986, M103352, M103376, M103416, M103419

are in conformity with:

- Machinery Directive 2006/42/EC
- Low Voltage Directive 73/23/EEC
- ROHS Directive 2011/65/EU

using the following harmonised standards:

- DS/EN 12100-1:2005
- DS/EN 13857:2008
- DS/EN 60439-3

Hedensted, 16 August 2016



Jens Jørgen Madsen
Director



HG

IMPROVING YOUR FUR BUSINESS

Vejlevej 15, DK-8722 Hedensted

Tel. (+45) 75 89 12 44

Fax (+45) 75 89 11 80

www.hedensted-gruppen.dk

February 2017

HG - IMPROVING YOUR FUR BUSINESS