



USER MANUAL



HG FEEDER 65 M

HG
HEDENSTED
GRUPPEN

HG FEEDER 65 M

	Subject	Page
1	Safety regulations	3
2	Description of function	6
3	Precautions before starting	14
4	Driving / feeding	16
5	Maintenance	17
6	Troubleshooting	21
7	Hydraulic and electrical diagrams	22
8	Technical data	25
9	Warranty terms and certificate	26
10	Service documentation	28
11	Parts lists and appendices	30
12	Declaration of conformity	47

1 Safety regulations

Read the manual

Read the instruction manual carefully, and make sure that anyone else who may be required to operate the machine reads it as well. Dangerous situations may arise if an operator is unfamiliar with certain aspects of the machine and its use.

WARNING! Hot parts



Never touch the engine or the exhaust pipe while the machine is running, or when the engine has just been switched off.

Hot parts can cause severe burns.

WARNING! Noise



We recommend the use of ear protectors. Long-term exposure to noise will damage your hearing.

WARNING! Moving parts



Make sure to keep your hands, feet, hair and clothes away from all moving parts. Never use the machine without the protective screens, etc. supplied.

Moving parts can cause serious injuries.

WARNING! Danger

When parking and performing service on the machine, make sure to switch off the engine, remove the ignition key and apply the handbrake.

The word **WARNING!** next to a text in the manual indicates that failure to follow the instructions may result in personal injury.

1.1 Training

- ◆ Read these instructions carefully. You need to familiarise yourself with all operation levers, switches, etc. and with how to use the equipment correctly.
- ◆ Do not allow children or anyone who has not studied the instructions to use the feeder. National legislation may lay down a minimum age for persons permitted to use the feeder.
- ◆ Remember that the operator is responsible for any and all accidents or potentially dangerous situations that may arise involving other people and/or their property.
- ◆ Operators must be instructed thoroughly in the use of the feeder. The instructions should emphasise:
 - 1) The need to be careful, thorough and focused when working with automotive machines.
 - 2) That the operator must maintain a good overview of what is happening in front of and behind the vehicle – particularly during feeding, when there may be other people in the immediate area.

The most common causes of accidents are:

- 1) Driving too fast, particularly with a full feed container
- 2) Taking turns too quickly, particularly when there is feed in the container
- 3) Lack of overview
- 4) The operator lacking sufficient familiarity with the vehicle
- 5) Excessive incline of the terrain

1.2 Preparation

- ◆ When operating the machine, make sure not to wear loose-fitting clothing that could become caught on nesting boxes, doorways, etc. In addition, make sure to wear non-slip footwear so that you can operate the pedals safely.
- ◆ Store fuel in containers approved for the purpose. Make sure to keep the containers out of the reach of children and unauthorised persons.
- ◆ Always refuel the machine outdoors. It is forbidden to smoke while refuelling.
- ◆ Always refuel before starting the engine. Never remove the cap from the fuel tank or attempt to refuel while the engine is hot or running.
- ◆ If you spill fuel, do not attempt to start the engine. Move the machine away from the place where you spilled the fuel so as to avoid igniting the spillage. If you spill fuel on the exhaust pipe or over the engine, wait until it has evaporated before starting the engine; otherwise there is a major risk of fire.
- ◆ If you spill diesel or motor oil on your skin, wash the area thoroughly with soap and water.
- ◆ It is hazardous to breathe in fuel or oil fumes.
- ◆ It is potentially fatal to ingest fuel or oil.

1.3 Noise and vibration levels



According to test report DANAK 100/1721 of 26 July 2013, the machine's noise level is 85 dB(A). Even though this is below the legally stipulated level, HG still recommends the use of ear protectors.

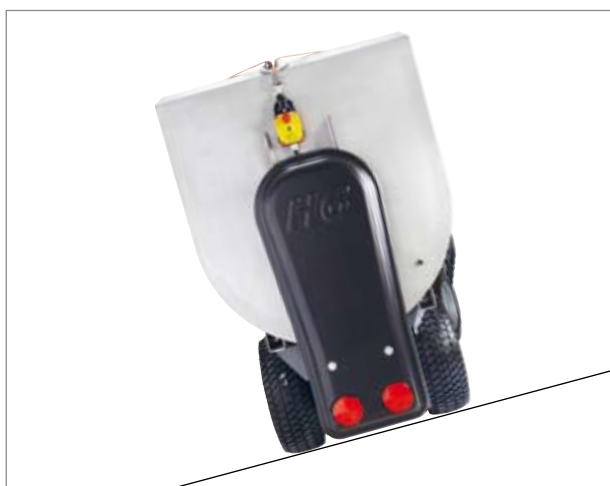
Hand/arm vibration level: 1.67 m/s²
Body vibration level: 0.34 m/s²

1.4 Operation

- ◆ The operator must wear a seatbelt while driving.
- ◆ If you use the machine indoors, you must make sure that the ventilation system is sufficient according to the regulations and recommendations that apply to the location.
- ◆ Do not let the engine run in small, enclosed rooms where there is a risk of hazardous carbon monoxide building up.
- ◆ **WARNING:** Breathing in carbon monoxide can cause poisoning and death.
- ◆ Never use the machine in locations where there is combustible dust or explosive gases, or where the exhaust pipe may come into contact with flammable material.
- ◆ Never place or store fuel or other flammable liquids close to the engine.
- ◆ As far as possible, only operate the feeder in daylight hours or use good artificial lighting.

- ◆ Do not rest your feet on the pedals when starting the engine – place them on the running board instead.
- ◆ Do not drive longitudinally along slopes, and never drive on slopes that exceed 15 degrees.

Machine incline: Max. 15°



- ◆ If the machine should tip over, hold on tightly to the steering wheel with both hands.
- ◆ Remember that the driving properties of the machine are very different with an empty and a full feed container. This is because the centre of gravity of the machine is much higher when the container is full.
- ◆ Never attempt to take sharp turns at high speed when there is feed in the container.
- ◆ For the best driving experience, operate the accelerator pedal with smooth movements of the foot. Remember that the speed of the machine increases proportionally with the movement of the accelerator pedal. This applies both when driving forwards and when reversing.
- ◆ When leaving the machine unattended, remember to apply the handbrake and remove the ignition key.
- ◆ Always stop the engine before carrying out any kind of service or repair work.
- ◆ Stop the engine and allow it to cool down before refuelling.
- ◆ Never touch the engine or the exhaust pipe while the engine is running.
- ◆ The machine is intended exclusively for feeding mink.

1.5 Maintenance

Wash the machine once a week. Make sure not to spray water directly onto electrical components or into the engine compartment.

Every time you refuel the machine, perform a visual check to ensure:

- ◆ That there are no leaks in the hydraulic system (hoses, tank, etc.).
- ◆ That there are no leaks in the fuel system (hoses, filters, tank, etc.).
- ◆ That all bolts, nuts, etc. are securely tightened.
- ◆ That the silencer is tight.
- ◆ That the radiator grille at the back and by the rotating flywheel is free from wool, etc.
- ◆ That no motor oil has been spilled around the motor oil filling aperture.
- ◆ That the accelerator pedal is not activated, and that the machine remains completely still when the pedal is released.

Check the air pressure in the tyres once a week and check the motor oil once a day.

1.6 Dismantling / Disposal

When, many years from now, the machine is worn out and has to be disposed of, HG will carry out the dismantling work by arrangement, as this work must be done in an environmentally friendly manner. During the dismantling process, the parts are sorted according to type of material. This means that steel parts are classed as steel, rubber seals as rubber, and so on. The various materials are then disposed of according to the regulations in effect at that time.

2 Description of function

Operator's panel



- | | |
|--|--|
| 1 Hand-held terminal for individual feeding (optional extra) | 10 Ignition switch |
| 2 Work light | 11 Throttle lever |
| 3 Mixer speed | 12 Hour counter |
| 4 Mixer rotation (forward / reverse) | 13 Indicator light – preheater |
| 5 Water dosage | 14 Indicator light – oil pressure |
| 6 Feed pump control (manual / automatic) | 15 Indicator light – water temperature |
| 7 Feed pump rotation (forward / reverse) | 16 Indicator light – battery charging |
| 8 Light switch | 17 Hand brake |
| 9 Feed computer (optional extra) | 18 Adjustment of water dosage |

The machine's functional units



- 19 Feed pedal
- 20 Operating pedal
- 21 Setting the operator's seat
- 22 Filling – diesel
- 23 Filling – hydraulic oil
- 24 Filling – water
- 25 Draining – water
- 26 Adjustment of feed pump speed
- 27 Main switch

- 28 Seat belt
- 29 Emergency stop
- 30 Battery
- 31 Fuse box
- 32 Filling – cooling water
- 33 Filling – motor oil
- 34 Oil filter
- 35 Air filter
- 36 Combi-cooler filter

FUNCTION

2.1 Hand-held terminal for individual feeding (optional extra)



See the section about extra equipment on page 16.

2.2 Work light



Make sure that you always have plenty of light to work by.

2.3 – 2.4 Mixer control



Use the switch on the left to select the rotation speed (high or low) for the mixer. Use the switch on the right to choose whether the mixer direction is to be forward (FWD) or reverse (REV). Turn the switches to their centre position to deactivate the mixer.

2.5 Water dosage



Use this switch to turn the water dosage on or off.

2.6 – 2.7 Feed pump control



Use the upper switch on the right to set feed pump control to manual (MAN) or automatic (AUTO). Use the lower switch on the left to choose whether the feed pump is to run forward (FWD) or reverse (REV).

2.8 Light switch



The light switch is positioned to the left of the hour counter.

2.9 Feed computer (optional extra)



You can use a feed computer to ensure a uniform volume of feed. See the section about extra equipment on page 16.

2.10 Ignition switch



The ignition switch features four positions:

0. Stop
1. Ignition
2. Preheat
3. Start

2.11 Throttle level



The throttle lever is positioned on the left-hand side of the operator's panel.

2.12 Hour counter



The hour counter indicates how many hours the machine has run. Please note that it will continue to count as long as the machine is switched on. Therefore, remember to switch off the ignition and remove the key when you leave the machine.

If the hour counter breaks, make sure to have it repaired immediately. Otherwise, it will be impossible to keep track of when to change the oil, etc.

2.13 - 2.16 Indicator lights



To the far right on the operator's panel, there are four indicator lights with the following functions:

- 1) **Preheater light** – must switch off before you start the engine.
- 2) **Oil indicator light** – must switch off approx. 2 seconds after you start the engine. If it does not, turn the engine off immediately.
- 3) **Temperature warning light** – lights up if the engine overheats. If this indicator light illuminates, turn the engine off immediately.
- 4) **Charging indicator** – lights up during operation if the battery is not charging.

2.17 Hand brake



Always apply the handbrake before leaving the machine.

2.18 Adjustment of water dosage



You can adjust the volume of water that is mixed with the feed when the feed pump is activated. Turn the tap to regulate the water volume. Clockwise: less water; anti-clockwise: more water.

2.19 Feed pedal



The feed pedal is located on the right-hand side of the machine. Activate the pedal every time you want to pump feed out.

2.20 Operating pedal



The operating pedal is located on the left-hand side of the machine. NB Activate this pedal carefully, as the speed of the machine increases proportionally to the degree the pedal is depressed. This means that the further you press the pedal down, the faster the machine will move. For the best driving experience, operate the pedal with smooth movements.

2.21 Setting the operator's seat



- 1) Indication of correct setting
When the yellow mark is in the green area, the seat has been adjusted correctly in relation to the operator's weight.
- 2) Hardness setting
- 3) Seat cushion setting
- 4) Backrest setting

2.22 Filling – diesel



The fuel cap is positioned to the left of the operating pedal. Always check the tank to make sure there is sufficient diesel in it.

2.23 Filling – hydraulic oil



The hydraulic oil tank is positioned to the right of the feed pedal. Use the dipstick to check the oil level.

2.24–25 Filling / Draining water



To fill water into the machine, pour it into the top of the water tank in front of the feed container. The drain valve is located in front of the front wheels. Please note that the container volume indication is approximate.

2.26 Adjustment of feed pump speed



You can regulate the circulation speed of the feed pump so that more or less feed is supplied during a given period. The regulator is positioned in front of the hand brake.

2.27 Main switch



The main switch is located below the hand brake.

2.29 Emergency stop



An emergency stop button is fitted to the left-hand side of the operating panel. To reset the system, pull the red button out. Then check that the bottom indicator is green and that the top line is between the arrows.

2.30 Battery



The battery is located behind the footboard. Always keep the top of the battery clean, otherwise there is a risk that it will discharge.

2.31 Fuse box



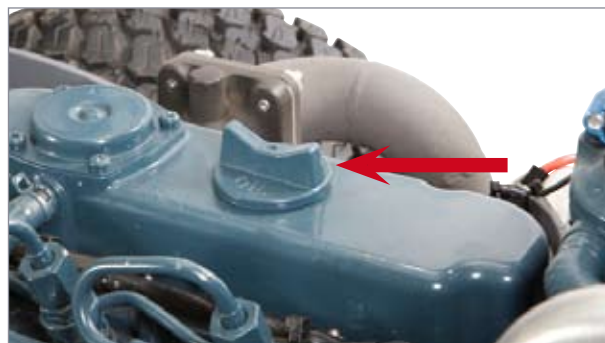
The fuse box is located under the operating panel. Never use fuses larger than those originally fitted in the machine. When replacing fuses, see the electrical diagrams on pages 23–24.

2.32 Filling – cooling water



The radiator is located under the operator's seat. Please note that the engine must be cold before you remove the radiator cap to refill with coolant. If the engine is hot, there is a risk of scalding.

2.33 Filling – motor oil



Check the motor oil level daily. To do this, use the dipstick located on the left side of the engine.

2.34 Air filter



The air filter is located under the operator's seat. To replace the filter, remove the end cap and pull the insert out.

2.35 Combi-cooler filter



The particle filter for the combi-cooler is located on the back of the machine. Tip the seat and remove the filter when it is time to blow it clean.

3 Precautions

3.1 Oil level, engine



Every time you use the machine, check the oil level in the engine before starting it. Make sure the machine is standing on a level surface when you check the oil level. Pull the dipstick out and wipe it clean with a cloth. Replace it, remove it again and read the level. If the oil level is below or just over the minimum line, refill with oil up to the maximum line.

3.2 Oil level, hydraulic



Use the dipstick to check the level of hydraulic oil.

3.3 Fuel, filling



Use standard diesel oil for Feeder 65 M. Look in the tank to check the volume of fuel it contains. Diesel oil is normally frost proof to temperatures as low as -21°C . In sharp frosts, however, paraffin may form in diesel oil. To prevent this happening, you can add petroleum according to the following table:

In temperatures below	Add
$\div 10^{\circ}\text{C}$	10% petroleum
$\div 20^{\circ}\text{C}$	25% petroleum
$\div 30^{\circ}\text{C}$	40% petroleum
$\div 40^{\circ}\text{C}$	55% petroleum

To be absolutely sure of the antifreeze level, we recommend that you ask your supplier for specifications for precisely the type of diesel you use.

WARNING

- Fuel is highly flammable. Be very careful, and always refuel outdoors.
- Newer smoke while refuelling.
- Newer refuel a hot engine. Wait at least 10 minutes for the engine to cool down.
- Do not overfill the tank as fuel can expand and spill over. Make sure that the cap is securely tightened after refuelling.
- Store fuel in a cool place, using containers designed for the purpose.
- Regularly check the fuel tank and hoses for leaks.

BEFORE STARTING

3.4 Air filter



Make sure to keep the air filter clean. A dirty or clogged air filter will reduce the output of the engine, increase fuel consumption and cause more wear and tear to the engine.

3.5 Radiator grille/combi-cooler



NB! You must keep the radiator clean because it functions as the air intake for cooling the engine. A fully or partially clogged grille will cause the engine temperature to rise, increasing the risk of engine problems/breakdown.



You can remove the particle filter in the radiator grille. Tip the operator's seat and remove the filter when it is time to blow it clean.

3.6 Tyre pressure



Check that the tyre pressure is correct. Incorrect tyre pressure can make the machine unstable and have an unpredictable effect on its manoeuvrability.

Lawn tyres (standard) no. 474746

Max.	65 PSI
Pressure	4.48 bar



Tractor tyres are available as an optional extra.

Tractor tyres no. 474760

Max.	67 PSI
Pressure	4.6 bar

4 Driving/feeding

4.1 Starting



Move the throttle lever to its top position. Turn the ignition key until the control lights illuminate. Check that they all light up. Now turn the key to the next position and hold it there until the preheater indicator light goes out. Then turn the key all the way to the final position and the engine will start.

WARNING

- The preheating should take no more than 10 seconds. If it takes longer than this, the preheater and the adjoining components may be damaged.
- Do not repeat preheating if the engine does not start first time.

4.2 Driving

Place both hands on the wheel and position your feet as far to the sides as possible. Open the throttle until you reach the desired number of revolutions. Then carefully press the accelerator pedal on the far left. The smoother the movements of your foot, the smoother the drive. We recommend that you do not drive the machine on soft land or on terrain approaching an incline of 15°.

WARNING

- Make sure that your feet and legs do not stick out so far from the machine that you risk bumping them against – or getting them caught on – cages, doorways, etc.
- You must only activate the pedals with your feet when sitting in the operator's seat – never activate them with your hands or while standing up.

Make sure not to take corners quickly, especially with a full feed container. If you do so, the machine can easily tip over as its centre of gravity is very high when the feed container is full.

We also recommend that you avoid driving the machine on terrain approaching an incline of 15°. Here, too, the machine will tip over very easily.

4.3 Feeding

Start by setting the feed pump speed and the water dosage (see pages 10-11). You will normally only need to do this more than once if the consistency/water content of the feed varies.

Press the feed pedal on the far right once for each portion of feed you are to distribute.

When distributing feed, make sure to concentrate on the task at hand and maintain a good overview. Take care not to come too close to the fittings and furnishings. A lapse of concentration can easily result in the machine damaging cages, nesting boxes, etc.

4.4 Stop

Throttle back to neutral and let the machine run for a few minutes to allow the engine temperature to fall to normal operating temperature before you stop it. This will help extend the service life of the engine.

4.5 Parking



Always park on level ground and remember to activate the handbrake and remove the ignition key.

4.6 Feed computer for individual feeding (optional extra)



If you fit a feed computer you can, for example, set the machine to distribute 200 g of feed in each portion. The computer can do much more besides.

For instance, it can take the strain off your ankle as you only need to keep the feed pedal depressed rather than having to activate it for each portion of feed.



If you have a hand-held terminal for individual feeding, you can use it to read a barcode placed on each cage to define how much feed each animal is to receive.

This helps ensure that the animals receive the maximum amount of feed every day so you can make full use of their growth potential. It will also help you save around 2 hours a day during the growth period if you have a stock of 3,000 females.

5 Maintenance

5.1 Maintenance schedule

Activity		For every xx hours of operation						
		5	25	100	200	500	2500	5000
Check	Hydraulic oil level and leaks	●						
	Motor oil level	●						
	Water pump			●				
	Oil indicator light			●				
	Acid level in accumulator			●				
	Fan belt tightness			●				
	Engine rack			●				
	Coolant		●					
	Exhaust	●						
	Pre-filter in air filter box (sponge)	●						
	Air filter	●						
	Air intake and radiator grille	●						
Adjust	Neutral position			●				
	Brake cable			●				
	Throttle cable			●				
Lubricate	Feed pump		●					
	Mixer screw			●				
	Brake axles			●				
	Cables			●				
	Steering gear			●				
Tighten	Various bolts			●				
	Wheel hubs			●				
	Engine rack			●				
Clean	Air filter			●				
	Fuel tank			●				
	Radiator fins and air intake			●				
	Filter on front of radiator		●					
Replace	Motor oil *)		First		●			
	Hydraulic oil *)		First			●		
	Air filter				●			
	Hydraulic oil filter		First			●		
	Fuel filter				●			
	Motor oil filter		First		●			
Engine overhaul	Belts					●		
	Partial						●	
	Complete							●

First

= Replace when the machine hour counter has reached 25 hours.

*)

= Replace at least once a year

Check components according to the supplier's recommendations. Hedensted Gruppen stipulates that an authorised service technician must perform a major service on the machine after every 500 hours of operation or at least once a year. All maintenance must be performed by a trained mechanic, farmer or similar.

5.2 Changing the motor oil and oil filter

We recommend that HG performs this task.

Motor oil



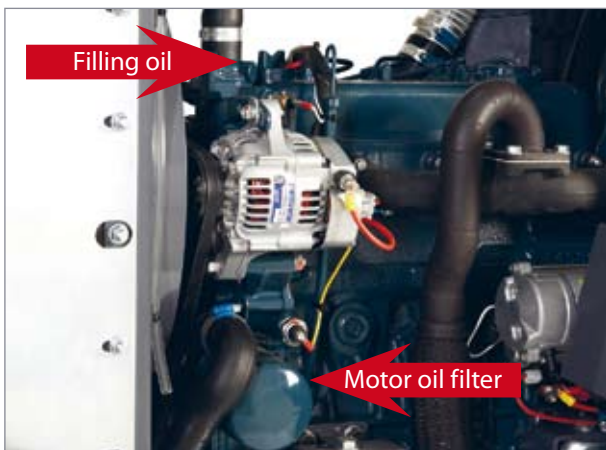
Place a suitable container under the engine with sufficient capacity to hold the 4.5 litres or so of oil you drain from the engine. Remove the drain plug. Once the oil has drained, replace the drain plug and refill with clean oil.

- ◆ Every time you unscrew the drain plug, you will need to replace the drain plug seal.

WARNING

- The motor oil can be very hot, so take care!

Oil filter



Remove the old oil filter and replace it with a new one. Make sure that the area around the oil cap is clean before you remove it.

5.3 Changing the hydraulic oil and the hydraulic oil filter

We recommend that HG performs this task.

Hydraulic oil

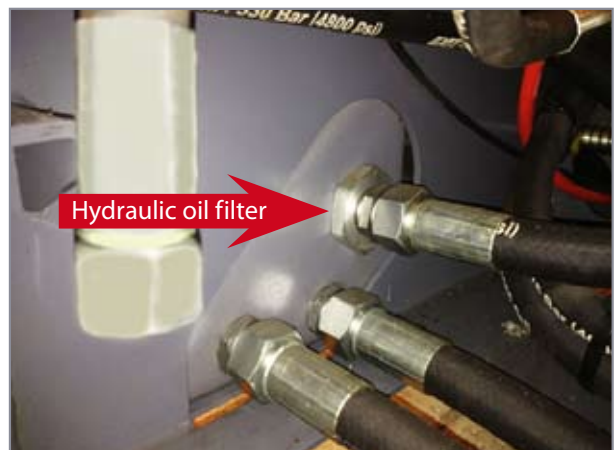


Place a suitable container under the hydraulic oil tank and remove the drain plug. Please note that a large volume of oil will be released. Replace the drain plug once all the oil has drained out. Refill with clean hydraulic oil (volume: see the specifications on page 25).

WARNING

- The hydraulic oil can be very hot, so take care!

Hydraulic oil filter



For replacement of the hydraulic oil filter, see the parts list page 30. Make sure that the nut and the surrounding area are clean before you remove it.

5.4 Replacing/cleaning the air filter



When it is time to clean or replace the air filter, open the filter housing and then pull the filter out. Tap it gently on the floor to remove the loose dirt.

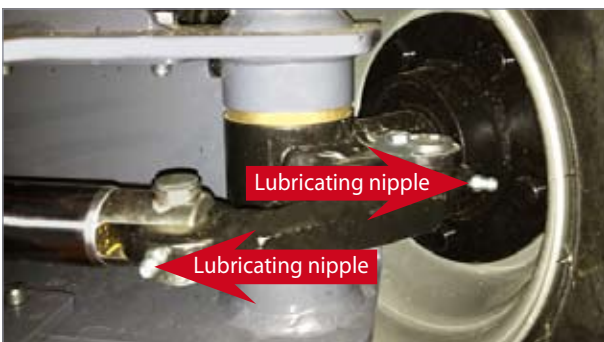


5.5 Lubrication

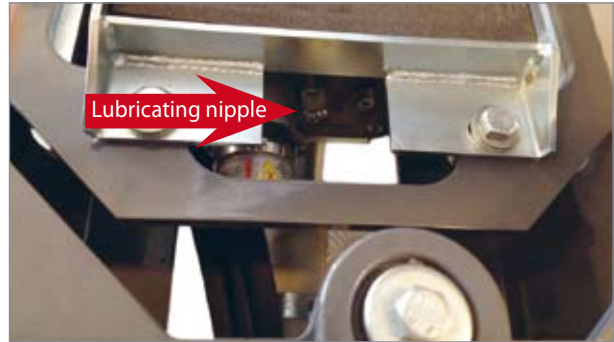
You can use standard high pressure grease for lubrication. Lubricating nipples are located:

- ◆ On the joints at each side of the steering cylinder
- ◆ In the feed pump
- ◆ At both ends of the mixer
- ◆ On the brake axle behind the rear wheels

Steering cylinder



Feed pump



Mixer



Mixer chain



Use chain oil or grease to lubricate the chain that powers the mixer. Here, too, you will find a lubricating nipple.

Brake axle



5.6 Cleaning the combi-cooler



The radiator grille on the back of the machine must be kept clean of wool and dirt. Lift the filter up and clean it. Remove any dirt from the water and oil cooler.

DO NOT clean with a water hose or compressed air as this may damage the engine.

WARNING

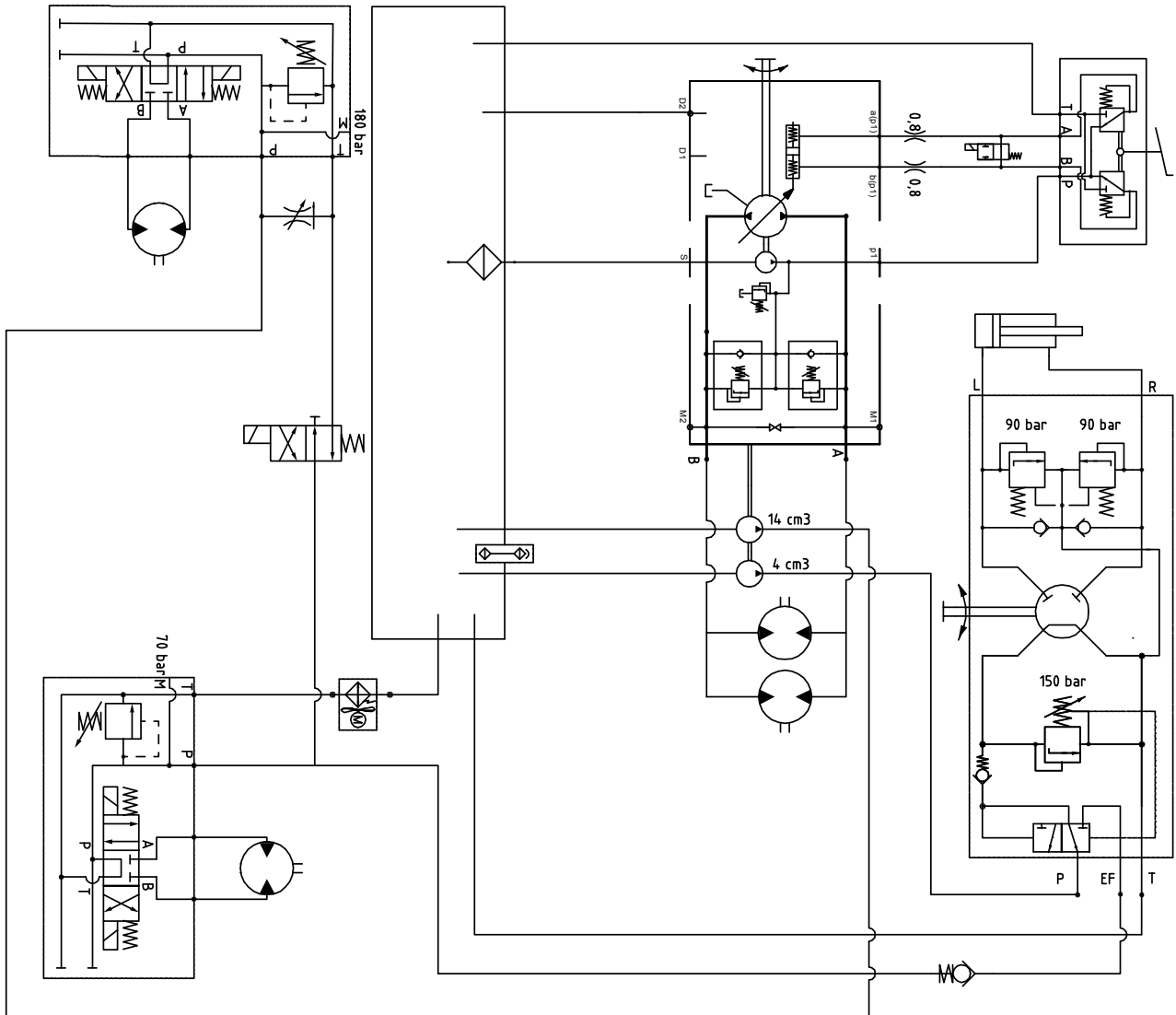
- Turn off the engine and remove the ignition key before starting the cleaning work.

5.7 Protectors

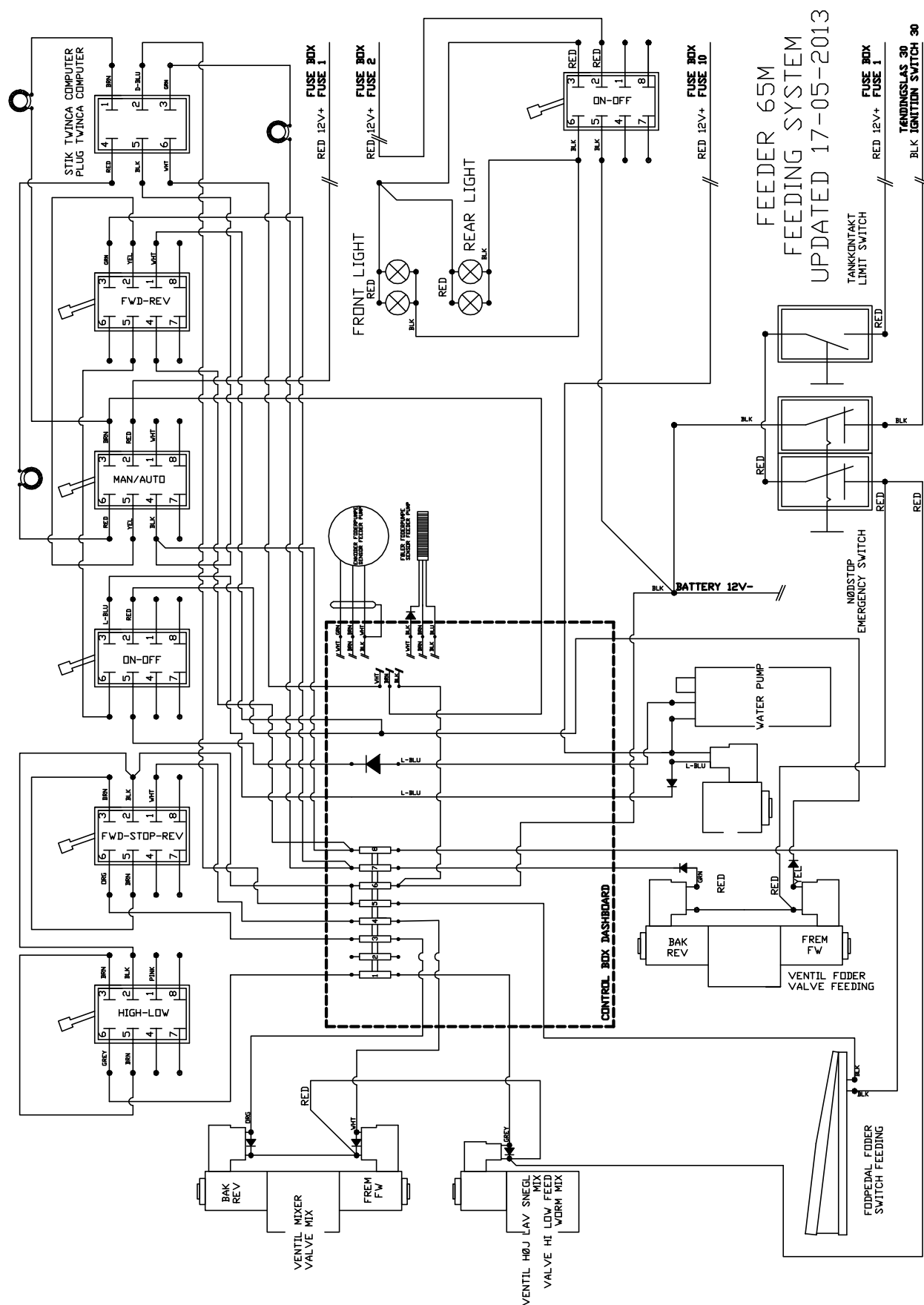
It is only permitted to remove any of the protectors on the machine in connection with repairs or service procedures.

6 FAQ

Problem	Possible cause	
The engine does not start	<ul style="list-style-type: none"> Incorrect fuel Air in the fuel pump 	<ul style="list-style-type: none"> Empty fuel tank Excessive piston clearance Blocked ventilation in filler cap
The engine starts but then stops	<ul style="list-style-type: none"> Blocked air filter Air in the fuel pump Blocked fuel filter 	<ul style="list-style-type: none"> Defective or blocked fuel supply Blocked valve in fuel tank Burned out exhaust valve
No power from the engine	<ul style="list-style-type: none"> Blocked air filter Blocked fuel filter Worn cylinder 	<ul style="list-style-type: none"> Worn piston rings Defective or blocked fuel supply Burned out exhaust valve
Low oil pressure in the engine	<ul style="list-style-type: none"> Blocked lubrication circuit Worn oil pump 	<ul style="list-style-type: none"> Defective oil pressure valve Defective main bearing
Engine blocked	<ul style="list-style-type: none"> Main bearing burned out or defective 	<ul style="list-style-type: none"> Pistons burned out Hydraulic pump blocked
Engine produces blue exhaust (diesel)	<ul style="list-style-type: none"> Worn valve guide Worn cylinder 	<ul style="list-style-type: none"> Too much oil in crankcase Worn piston rings
Engine produces white exhaust (diesel)	<ul style="list-style-type: none"> Excessive piston clearance 	<ul style="list-style-type: none"> Incorrect injection timing
Engine produces black exhaust (diesel)	<ul style="list-style-type: none"> Overload 	<ul style="list-style-type: none"> Injection error
Engine knock in the crankcase	<ul style="list-style-type: none"> Small or big end bearings burned out or defective 	
Engine knock in the tappet	<ul style="list-style-type: none"> Incorrect fuel Insufficient piston clearance 	<ul style="list-style-type: none"> Incorrect injection timing Worn piston rings
Engine consumes a lot of oil	<ul style="list-style-type: none"> Worn valves Worn cylinder Leaky oil seals 	<ul style="list-style-type: none"> Too much oil in crankcase Worn piston rings
Motor oil level rises	<ul style="list-style-type: none"> Excessive piston clearance 	<ul style="list-style-type: none"> Defective injection system
Engine losing oil	<ul style="list-style-type: none"> Blocked breather pipe 	<ul style="list-style-type: none"> Defective injection system
Engine overheats	<ul style="list-style-type: none"> Insufficient piston clearance Blocked radiator fins Incorrect injection timing 	<ul style="list-style-type: none"> Defective injection system Overloaded engine
Engine misfires	<ul style="list-style-type: none"> Incorrect fuel Cold engine Blocked radiator fins 	<ul style="list-style-type: none"> False air via the injection pump Defective injection system
Poor acceleration	<ul style="list-style-type: none"> Incorrect fuel 	<ul style="list-style-type: none"> False air via the injection pump



7 Electric circuit diagram



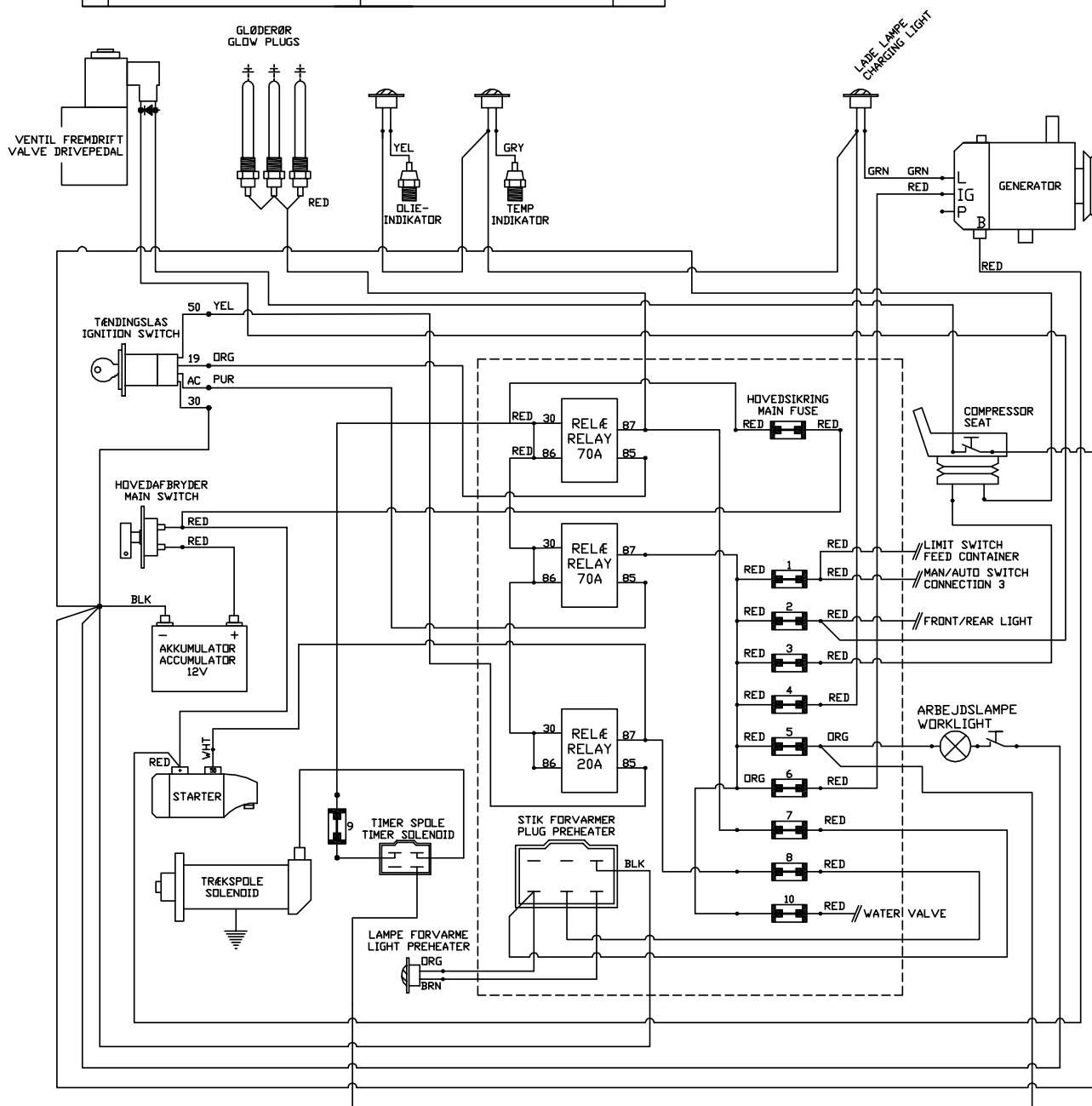
7 Electric circuit diagram

SIKRINGER / FUSES			
NR	BESKRIVELSE	DISCRIPTION	A
	HOVEDSIKRING	MAIN FUSE	80A
1	FODERSYSTEM	FEEDING SYSTEM	15A
2	LYS FOR/BAG	LIGHT FRONT/REAR	7,5A
3	KOMPRESSOR SÆDE	COMPRESSOR SEAT	15A
4	KONTROLLAMPER	KONTROLLAMPER	7,5A
5	ARBEJDSLAMPE	WORKLIGHT	15A
6	TRÆKSPØLE-GENERATOR	SOLENOID - GENERATOR	7,5A
7	FORVARME	PREHEATER	7,5A
8	FORVARME	PREHEATER	7,5A

FARVEKODER - COLORCODES.

BLK - SORT / BLACK
 BLU - BLÅ / BLUE
 BRN - BRUN / BROWN
 GRN - GRØN / GREEN
 GRY - GRÅ / GRAY
 ORG - ORANGE
 PNK - LYSERØD / PINK
 PPL - LILLA / PURPLE
 RED - RØD / RED
 WHT - HVID / WHITE
 YEL - GUL / YELLOW

FEEDER 65M
 UPDATED 17-05-2013



8 Technical data

8.1 HG Feeder 65 M

Dimensions and weight	
Width	90 cm
Length	237 cm
Height	151 cm
Net weight	850 kg

Engine	
Kubota V1305	25 hp (18,5 kW)
Capacity	898 cm ³
Bore x stroke	72 x 73.6 mm

Misc. fluids	
Motor oil	Q8 7520 15W-40 (or better)
Hydraulic oil	Q8 Handel 46
Fuel	Diesel

Tanks and containers	
Feed tank	650 litres
Water tank	55 litres
Diesel tank	35 litres
Hydraulic tank	40 litres

Wheel dim./tyre pressure	
Wheel dimensions	23 x 8.50-12
Tyre pressure	65 PSI

Steering gear	
Steering	Servo
Turn diameter (circumscribed circle)	4.2 meter

9 Warranty conditions

Warranty period

Hedensted Gruppen provides a 12-month warranty (max. 1,000 operating hours) as from the date of delivery.

The warranty covers

- ◆ Components that have to be repaired or replaced on account of material defect or manufacturing error.

The warranty does not cover wearing parts and consumables such as:

- ◆ Feed pumps, tyres, light bulbs, filters, oil and so on.

The manufacturer's warranty shall be terminated in the event that

- ◆ The machine is used incorrectly.
- ◆ The machine is used without the operator complying with the information in the instruction manual and safety regulations.
- ◆ The timings in the service schedule are not observed, or if obsolete parts such as filters are used.
- ◆ The machine is used after a fault or defect has been identified, and the resulting repair is more expensive than the cost of repairing the original fault.

The owner's own insurance should cover:

- ◆ Fire, break-in, theft and vandalism
- ◆ Water and frost damage
- ◆ Corrosion damage caused by battery acid
- ◆ Damage caused by the weather

These are not covered by the manufacturer's warranty.

Approval of claims for compensation

Approval from the manufacturer of claims for compensation is conditional upon the defective part(s) being presented to the manufacturer or the manufacturer's representative within two (2) weeks of the damage being identified. The right of ownership to the damaged part(s) shall be transferred to the supplier of the new part(s).

Only components can be replaced under the warranty, which therefore does not cover

- ◆ Freight costs.
- ◆ Costs in connection with waiting time, the machine owner's working hours and travel expenses.
- ◆ Loss of earnings and other consequential expenses.

Other information

Before repairs under warranty, the manufacturer must be contacted to agree on the procedure. If the repair work has been initiated or completed, the cost of same cannot be claimed against the warranty.

The present warranty conditions can only be amended through a separate agreement.

WARRANTY CERTIFICATE

Version _____

Type/Chassis no. _____

Model/year _____

Delivery date _____

Seller/fitter _____

Company _____

Address _____

Signature _____

First owner _____

Address _____

Telephone no. _____

Second owner _____

Address _____

Telephone no. _____

Special conditions _____

The warranty certificate is to be filled in by an HG fitter no later than in connection with the first service (50 hours).

10 Service documentation

Service no. 1

Service completed

Number of hours _____

Date _____

Work order no. _____

SIGNATURE

Service no. 4

Service completed

Number of hours _____

Date _____

Work order no. _____

SIGNATURE

Service no. 2

Service completed

Number of hours _____

Date _____

Work order no. _____

SIGNATURE

Service no. 5

Service completed

Number of hours _____

Date _____

Work order no. _____

SIGNATURE

Service no. 3

Service completed

Number of hours _____

Date _____

Work order no. _____

SIGNATURE

Service no. 6

Service completed

Number of hours _____

Date _____

Work order no. _____

SIGNATURE

10 Service dokumentation

Service no. 7**Service completed**

Number of hours _____

Date _____

Work order no. _____

SIGNATURE

Service no. 10**Service completed**

Number of hours _____

Date _____

Work order no. _____

SIGNATURE

Service no. 8**Service completed**

Number of hours _____

Date _____

Work order no. _____

SIGNATURE

Service no. 11**Service completed**

Number of hours _____

Date _____

Work order no. _____

SIGNATURE

Service no. 9**Service completed**

Number of hours _____

Date _____

Work order no. _____

SIGNATURE

Service no. 12**Service completed**

Number of hours _____

Date _____

Work order no. _____

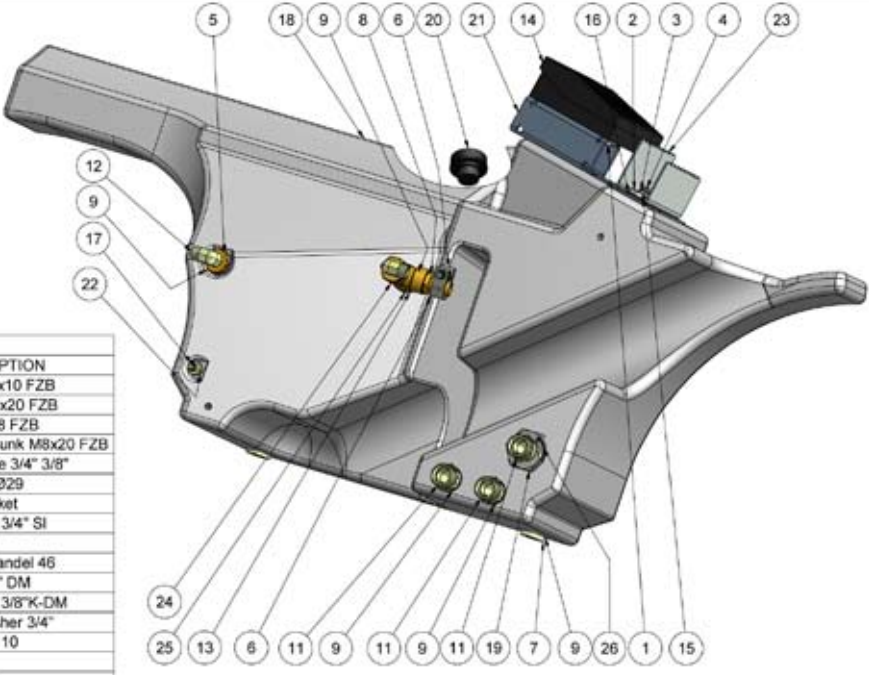
SIGNATURE

11 Spare parts list and appendice

11.1 Commonly used parts

Item no.	Feeder 65 M
474760	Tractor tyres
474746	Lawn tyres
476710	Motor oil, 20 litre container
476722	Hydraulic oil, 20 litre container
M100304	Inline filter
467040	Air filter insert
467010	Motor oil filter
467015	Fuel filter
467025	Fan belt
475507	Work light
M100202	Hydraulic oil filter

11.2 Spare parts appendice



PARTS LIST

ITEM	QTY	PART NUMBER	DESCRIPTION
1	3	10204010	Bolt unbraco cyl 4x10 FZB
2	2	11410020	Hexagon bolt M10x20 FZB
3	2	17908000	Self-locking nut M8 FZB
4	2	20408020	Hexagon countersunk M8x20 FZB
5	2	216736	Nipple male female 3/4" 3/8"
6	1	422650	Hose clamp Ø27-Ø29
7	2	424035	Plug 3/4" with gasket
8	1	424080	3/4" Male mess. f. 3/4" SI
9	6	473812	O-ring 25.8x3.53
10	35.0 l	476721	Hydraulic oil Q8 handel 46
11	3	477126	Male stud 22L 3/4" DM
12	2	477139	Elbow stud Ø12-L 3/8"K-DM
13	2	477164	Bopnded seal washer 3/4"
14	1	489105	Foot pedal XPEA110
15	2	82108000	Washer M8 FZB
16	2	82110000	Washer M10 FZB
17	1	M100071	Male stud 6L 1/4"
18	1	M100166	Hydraulicoil tank
19	1	M100202	Suction filter 60my
20	1	M100203	Breather with filter 3/4"
21	1	M100211	Mounting plate for pedal
22	1	M100295	O-Ring Ø11.5x3
23	1	M100319	Heel support
24	1	M100450	Tee 3-4 female brass
25	1	M100451	Male stud 3/4"x3/4" male
26	1	M100452	O-ring Ø38x5

REVISION HISTORY

REV	DESCRIPTION	DATE	APPROVED
A	Made	13-12-2012	KC
B	Part List updated	26-03-2013	KC
C	Part List updated	03-09-2013	KC

Hydraulic tank assembly

1/4 DS150 2768-m A3
No 1/1

M100294

Hydraulic tank assembly

PARTS LIST			
ITEM	QTY	PART NUMBER	DESCRIPTION
1	8	11412070	Hexagon bolt M12x70 FZB
2	2	250081	Brace for brake
3	2	250090	Brake shaft assembly
4	2	250093	Compression spring Di 20,5 Lo 76
5	2	250133	Spacer for brake
6	2	250143	Wheel hub with brake
7	8	4212000	Washer type TBR5B 13x36x6 FZB
8	2	423068	Grease fitting M8 straight
9	2	423519	Hydraulic wheel motor
10	2	424048	Adjustable elbow 15L DM
11	1	470502	Nipple for throttle cable
12	2	477072	Adjustable tee SL15 L
13	1	M100047	Extension spring
14	1	M100178	Frame feeder 65M
15	2	M100391	Wheel motor hose

Alle kanten reifen
Breite all edges

1:6		DS/ISO 2768-m	A3
No		No	1/1
M100304			
1Th Base assembly 65M			

A	Made	13-12-2012	KC
B	Part list updated	10-04-2013	KC
REV	DESCRIPTION	DATE	APPROVED
REVISION HISTORY			

PARTS LIST			
ITEM	QTY	PART NUMBER	DESCRIPTION
1	2	11408020	Hexagon bolt M8x20 FZB
2	2	11410020	Hexagon bolt M10x20 FZB
3	2	11410065	Hexagon bolt M10x65 FZB
4	2	1510000	Nut M10 FZB
5	2	250137	Tension plate for battery
6	1	421419	Negative terminal
7	1	423068	Grease fitting M8 straight
8	1	423498	Cover for positive terminal
9	1	423497	Cover for ground terminal
10	1	423529	Positive terminal
11	1	476002	Battery for feeder
12	2	82108000	Washer M8 FZB
13	2	82110000	Washer M10 FZB
14	1	82116000	Washer M16 FZB
15	1	M100160	Steering assembly complete
16	1	M100179	End plate
17	1	M100180	Lubricate bolt
18	1	M100304	1Th Base assembly 65M

Alle kanten reifen
Breite all edges

1:6		DS/ISO 2768-m	A3
No		No	1/1
M100305			
2Th Base assembly 65M			

A	Made	13-12-2012	KC
B	Part list updated	10-04-2013	KC
REV	DESCRIPTION	DATE	APPROVED
REVISION HISTORY			

SPARE PARTS

PARTS LIST			
ITEM	QTY	PART NUMBER	DESCRIPTION
1	4	10208012	Bolt unbraco cyl 8x12 FZB
2	1	M100259	Valve assembly for mixer
3	1	M100305	2Th Base assembly 65M
4	1	M100363	Hose 1 mixer motor
5	1	M100364	Hose 2 mixer motor
6	1	M100365	Hose 1 mixer valve
7	1	M100366	Hose 2 mixer valve
8	1	M100367	Hose 1 for steering
9	1	M100368	Hose 2 for steering

REV	DESCRIPTION	DATE	APPROVED
A	Made	13-12-2012	KC
B	Part List updated	19-03-2013	KC

REVISION HISTORY			
A	Made	13-12-2012	KC
B	Part List updated	19-03-2013	KC

HGS			
1	6	DS/ISO 2768-m	A3
HGS		No	1 / 1
M100305			
3Th Base assembly 65M			

PARTS LIST			
ITEM	QTY	PART NUMBER	DESCRIPTION
1	10	11408016	Hexagon bolt M8x16 FZB
2	1	11408035	Hexagon bolt M8x35 FZB
3	2	11410020	Hexagon bolt M10x20 FZB
4	1	17908000	Self-locking nut M8 FZB
5	12	82108000	Washer M8 FZB
6	2	82110000	Washer M10 FZB
7	1	M100298	Engine assembly
8	1	M100301	Exhaust system for 65M
9	1	M100303	Cooler assembly
10	1	M100306	3Th Base assembly 65M
11	1	M100416	Stiffening for exhaust

REV	DESCRIPTION	DATE	APPROVED
A	Made	13-12-2012	KC
B	Part List updated	03-07-2013	KC

REVISION HISTORY			
A	Made	13-12-2012	KC
B	Part List updated	03-07-2013	KC

HGS			
1	6	DS/ISO 2768-m	A3
HGS		No	1 / 1
M100307			
4Th Base assembly 65M			

PARTS LIST			
ITEM	QTY	PART NUMBER	DESCRIPTION
1	2	11408016	Hexagon bolt M8x16 FZB
2	2	11410020	Hexagon bolt M10x20 FZB
3	2	82108000	Washer M8 FZB
4	1	82110000	Washer M10 FZB
5	1	M100212	Step for feeder
6	1	M100296	Fuel tank assembly
7	1	M100307	4Th Base assembly 65M
8	2	M100369	Hose for wheel motor
9	2	M100370	Suction hose for Pump
10	1	M100371	Suction hose for Hydrostate

Alle kanten rufen
Breite all edges

1:8		DS/ISO 2768-m	A3
No		No	1/1
M100308			
5Th Base assembly 65M			

A	Made	13-12-2012	KC
B	Part list updated	25-03-2013	KC
REV	DESCRIPTION	DATE	APPROVED
REVISION HISTORY			

PARTS LIST			
ITEM	QTY	PART NUMBER	DESCRIPTION
1	2	11408020	Hexagon bolt M8x20 FZB
2	2	11410020	Hexagon bolt M10x20 FZB
3	2,800 m	472533	45 mm Blue Feed hose Kleber
4	1	472560	Feedingbeak short 45mm
5	2	474215	Hose clamp ø55mm Goliath
6	2	82108000	Washer M8 FZB
7	2	82110000	Washer M10 FZB
8	1	M100294	Hydraulicoil tank assembly
9	1	M100308	5Th Base assembly 65M
10	1	M100318	Hose brace
11	1	M100372	Radiator return hose
12	1	M100373	Return hose for hydrostate

Alle kanten rufen
Breite all edges

1:8		DS/ISO 2768-m	A3
No		No	1/1
M100308			
6Th Base assembly 65M			

A	Made	13-12-2012	KC
B	Part list updated	25-03-2013	KC
REV	DESCRIPTION	DATE	APPROVED
REVISION HISTORY			

SPARE PARTS

PARTS LIST			
ITEM	QTY	PART NUMBER	DESCRIPTION
1	2	11405012	Hexagon bolt M5x12 FZB
2	1	11408012	Hexagon bolt M8x12 FZB
3	1	11408012	Hexagon bolt M8x12 FZB
4	4	11410020	Hexagon bolt M10x20 FZB
5	2	423808	Relay high power 12V 70A
6	1	477950	Relay DC 12V 30A
7	4	82110000	Washer M10 FZB
8	1	M100198	Steering column
9	1	M100309	6Th Base assembly 65M

468110 Lid for watercooler ø45

467028 Preheat relay Kubota 722 & 902

467805 Start/stop relay Kubota 902

REV	DESCRIPTION	DATE	APPROVED
A	Made	13-12-2012	KC
B	Part List updated	27-03-2013	KC

REVISION HISTORY

Scale	DS/ISO 2768-m	Sheet
1:6	No	1/1

Alle kanten reffen
Breaks all edges

M100310
7Th Base assembly

PARTS LIST				PARTS LIST			
ITEM	QTY	PART NUMBER	DESCRIPTION	ITEM	QTY	PART NUMBER	DESCRIPTION
1	2	10204030	Bolt unbraco cyl 4x30 FZB	16	1	M100261	Brace for handle
2	1	10205010	Bolt unbraco cyl 5x10 FZB	17	1	M100262	Handle for clamp
3	1	11408016	Hexagon bolt M8x16 FZB	18	1	M100263	Snap lock GN 617
4	4	11408025	Hexagon bolt M8x25 FZB	19	1	M100264	String for clamp
5	4	11412035	Hexagon bolt M12x35 FZB	20	1	M100310	7Th Base assembly
6	5	17908000	Self-locking nut M8 FZB	21	1	M100387	Switch holder
7	1	600972	Limit switch	22	4	M10357	Pipe 1 for hinge
8	2	76008016	Bolt buttonhead 8x16 FZB	23	1	M10406	Curve for switch
9	1	82105900	Washer M5 FZB	24	1	M10407	Arm for switch
10	3	82108000	Washer M8 FZB				
11	2	M100191	lock plate				
12	1	M100192	Clamp				
13	1	M100195	Main container assembly 65M				
14	4	M100196	Spacer for bearing				
15	2	M100197	Lock plate for container				

A (1:4)

REV	DESCRIPTION	DATE	APPROVED
A	Made	13-12-2012	KC
B	Part List updated	08-04-2013	KC

REVISION HISTORY

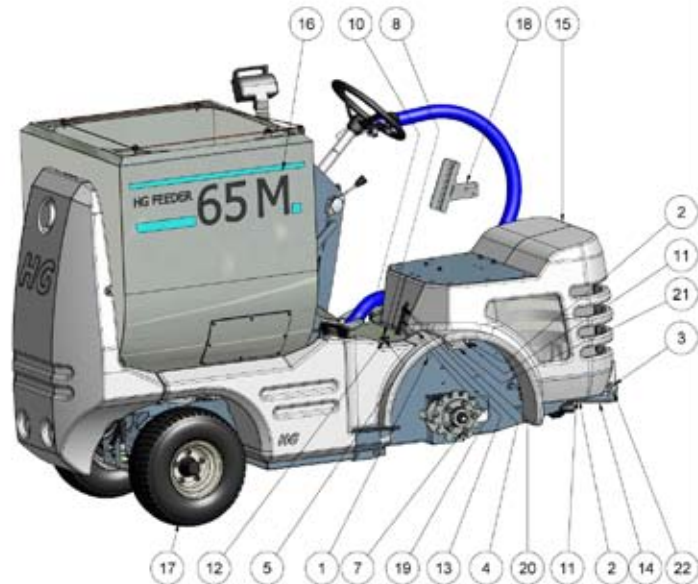
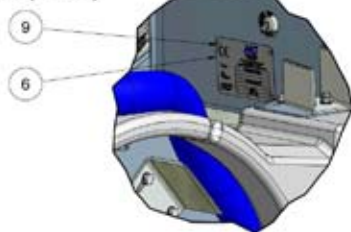
Scale	DS/ISO 2768-m	Sheet
1:12	No	1/2

Alle kanten reffen
Breaks all edges


M100317
8Th Baseassembly 65M

PARTS LIST			
ITEM	QTY	PART NUMBER	DESCRIPTION
1	4	11408020	Hexagon bolt M8x20 FZB
2	8	11410020	Hexagon bolt M10x20 FZB
3	2	11412035	Hexagon bolt M12x35 FZB
4	1	140875	Countersunk wood screw 5x20 FZB PZ2
5	1	17905000	Self-locking nut M5 FZB
6	1	30052	ID plate Feeder 65M
7	10	479910	Wheel nut M12x1.5 NV22 60° FZB
8	1	64405025	Cup head square neck bolt M5x25 FZB
9	4	7003208	Pop rivet ø3 2x8mm
10	3	76008016	Bolt buttonhead 8x16 FZB
11	8	82110000	Washer M10 FZB
12	1	M100172	Foot plate
13	2	M100210	Stop for motor cover
14	1	M100228	Hinge for engine cover
15	1	M100239	Motorcover assembly
16	2	M100286	HG Feeder 65M
17	1	M100317	8Th Baseassembly 65M
18	1	M100322	Hose support
19	1	M100333	Rubber strap
20	1	M100336	Knop
21	1	M10353	Plate stiffening for seat
22	2	M10357	Pipe 1 for hinge

A (1:4)

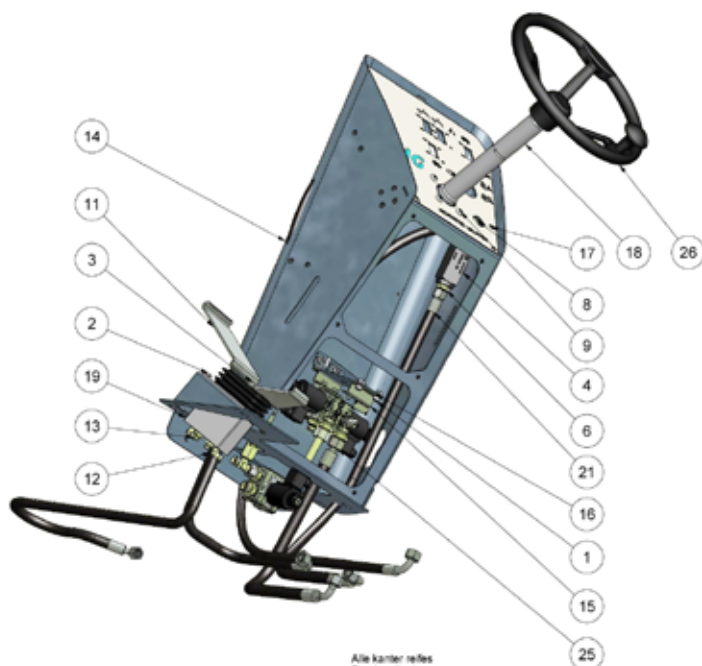
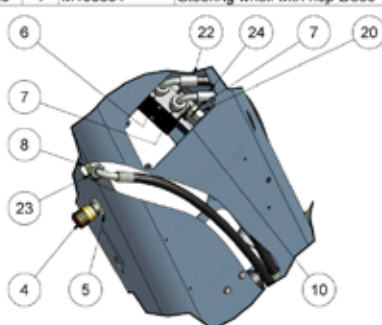


Alle kanten reflex
Brechen alle Ecken





Release all edges 		Last 1/12	Drawn according to DS/ISO 2768-m	Sheet no. A3
Modeller G. S. G				

A	Made	13-12-2012	KC
B	View's updated	08-04-2013	KC
REV	DESCRIPTION	DATE	APPROVED
REVISION HISTORY			

PARTS LIST			
ITEM	QTY	PART NUMBER	DESCRIPTION
1	2	10208012	Bolt unbraco cyl 8x12 FZB
2	6	11408016	Hexagon bolt M8x16 FZB
3	2	20408012	Hexagon countersunk 6x12 FZB
4	1	423707	Flow control valve 3-8
5	1	423708	Union nut
6	4	477118	Male stud 12L 3/8"
7	2	477128	Male stud 12L 1/2"
8	1	477139	Elbow stud Ø12-L 3/8" K-DM
9	4	76010020	Bolt buttonhead 10x20 FZB
10	1	M100068	Orbitrol 50ccm w priority valve
11	1	M100068	Foot pedal
12	2	M100070	Elbow stud 6L 1-4 K-DM
13	2	M100071	Male stud 6L 1/4"
14	1	M100165	Steering column
15	1	M100256	Valve assembly for feeding pump
16	1	M100257	Valve brace
17	1	M100311	Label for dashboard 65M
18	1	M100334	Steering column 249
19	1	M100340	Hydraulic pedal
20	1	M100374	Orbitrol EF connection
21	1	M100375	Hose 1 for flow adjustment
22	1	M100376	Return hose for orbitrol
23	1	M100377	Hose 2 for flow adjustment
24	1	M100378	Hose Orbitrol to pump
25	1	M100380	Pump to Valve for feed pump
26	1	M100381	Steering wheel with nop Ø300



Alle kanten reflex
Brechen alle Ecken

Break at all edges				1:6 		No 		A3 	
M100312 Steering assembly 1									

A	Made	13-12-2012	KC
B	Partist updated	26-03-2013	KC
REV	DESCRIPTION	DATE	APPROVED
REVISION HISTORY			

SPARE PARTS

PARTS LIST			
ITEM	QTY	PART NUMBER	DESCRIPTION
1	2	11406020	Hexagon bolt M5x20 FZB
2	4	17905000	Self-locking nut M5 FZB
3	2	17906000	Self-locking nut M6 FZB
4	8	20408016	Hexagon countersunk 8x16 FZB
5	4	76005016	Bolt buttonhead 5x15 FZB
6	1	M100016	Throtel lever
7	1	M100134	Main switch - 100 A
8	1	M100242	Electric box 235x188x85
9	1	M100287	Throttle lever left
10	1	M100312	Steering assembly 1
11	1	M100382	Pedal hose 1
12	1	M100383	Pedal hose 2
13	1	M100384	Pedal hose 3
14	1	M100385	Pedal hose 4
15	1	M100386	Radiator hose 3

Alle kanten reifen
Break all edges

H&G		1:5	DS/ISO 2768-m	A3
Hedensted Gruppen			No	1/1
M100313				
Steering assembly 2				

REV	DESCRIPTION	DATE	APPROVED
A	Made	13-12-2012	KC
B	Part List updated	27-03-2013	KC

REVISION HISTORY

PARTS LIST			
ITEM	QTY	PART NUMBER	DESCRIPTION
1	1	11408016	Hexagon bolt M8x16 FZB
2	3,000 m	250192	Outer cable Ø1,9 Ø6
3	4,000 m	250193	Inner cable Ø1,9mm
4	4	250194	Cab for cable
5	1	475507	Work lamp With switch
6	1	475525	Light bulb H3 12V 55W
7	1	477980	Rocker switch ON-OFF
8	3	477981	Aktuator for 477980 and 477982
9	2	477982	Rocker switch ON-ON
10	1	477983	Aktuator for 477985
11	1	477985	Rocker switch OFF/ON/ON
12	1	82108000	Washer M8 FZB
13	1	M100063	AMA Inition lock
14	3	M100247	Indicator red
15	1	M100248	Indicator Green
16	1	M100249	Hour meter
17	1	M100313	Steering assembly 2
18	4	M100341	Light bulb 12v
19	1	M100342	Plate for light

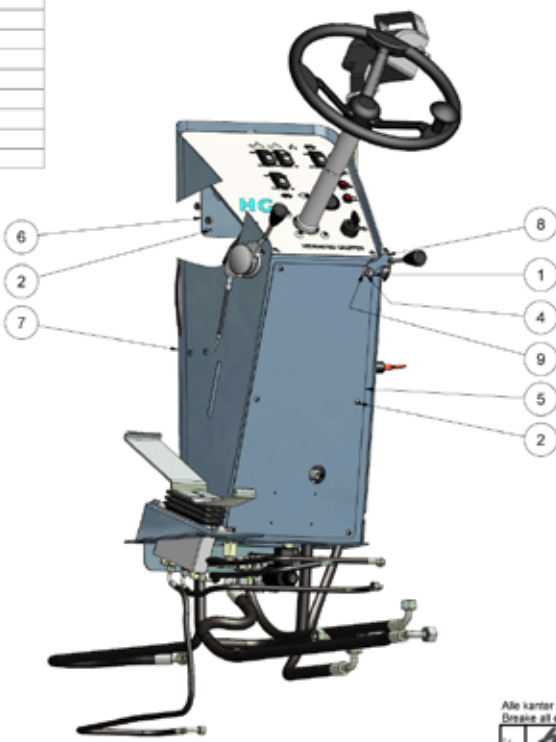
Alle kanten reifen
Break all edges

H&G		1:5	DS/ISO 2768-m	A3
Hedensted Gruppen			No	1/1
M100314				
Steering assembly 3				

REV	DESCRIPTION	DATE	APPROVED
A	Made	13-12-2012	KC
B	Part List updated	27-03-2013	KC

REVISION HISTORY

PARTS LIST			
ITEM	QTY	PART NUMBER	DESCRIPTION
1	1	11406025	Hexagon bolt M6x25 FZB
2	9	78006012	Bolt buttonhead 6x12 FZB
3	2	82106000	Washer M6 FZB
4	1	87606000	Washer ø6,5x16,5x3 FZB
5	1	M100206	Plate for column
6	1	M100258	Cover plate for column
7	1	M100314	Steering assembly 3
8	1	M100315	Brake lock
9	1	M100316	Bushing for lock

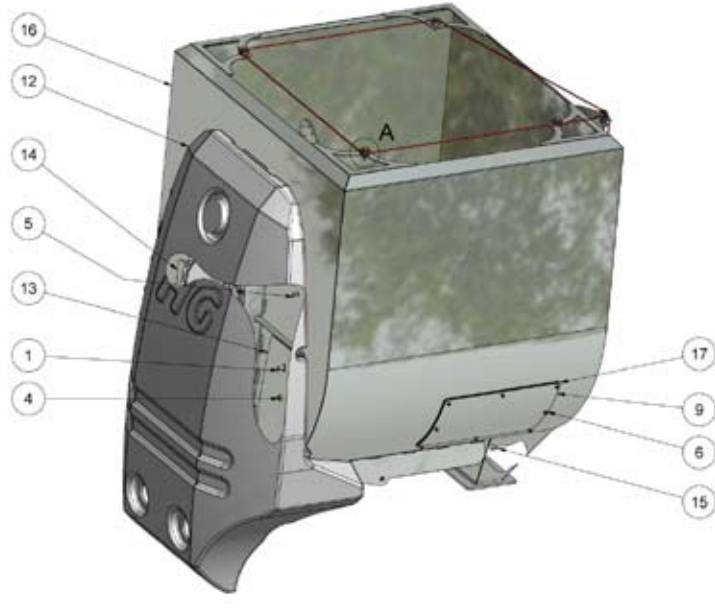


Alle kanten reifen
Breaks all edges

H&G		1 : 6	DS/ISO 2768-m	A3
Hedensted Gruppen		No		1 / 1
M100198				
Steering column				

A	Made	13-12-2012	KC
B	Part List updated	27-03-2013	KC
REV	DESCRIPTION	DATE	APPROVED
REVISION HISTORY			

PARTS LIST			
ITEM	QTY	PART NUMBER	DESCRIPTION
1	4	11410020	Hexagon bolt M10x20 FZB
2	6	12606000	Nut M6 A2
3	6	12906030	Hexagon bolt m6x30 A2
4	2	12908016	Hexagon bolt 8x16 A2
5	2	12910016	Hexagon bolt M10x16 A2
6	9	19905000	Self-locking nut M5 inox A2
7	6	430465	Wheel for wire emergency stop
8	6	82106000	Washer M6 FZB
9	1	M100027	Hatch for feed container
10	6	M100038	Bushing for wire
11	3,000 m	M100039	Inox wire 7x7 Ø3
12	1	M100200	Front cover 65M
13	1	M100213	Left brace for water tank
14	1	M100214	Right brace for water tank
15	1	M100297	Plug 1/4" with gasket
16	1	M100324	65M Container assembly 2
17	1	M10135	Gasket for hatch



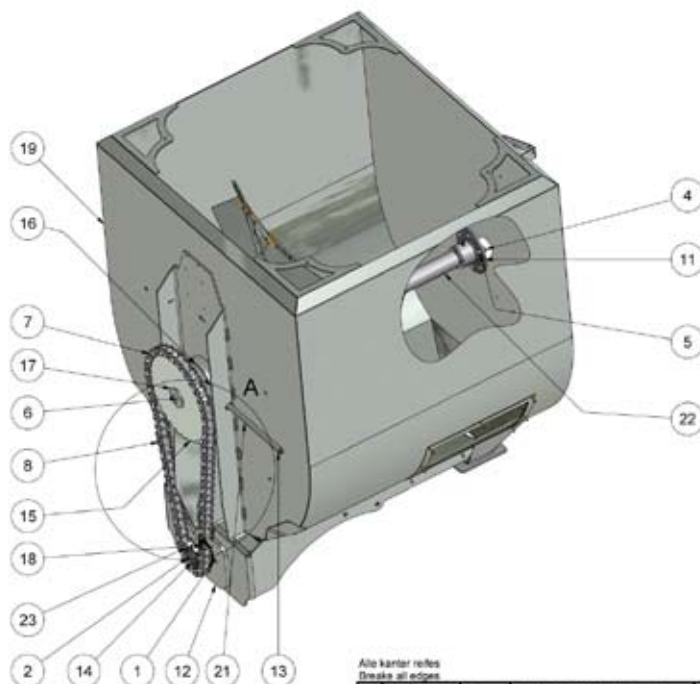
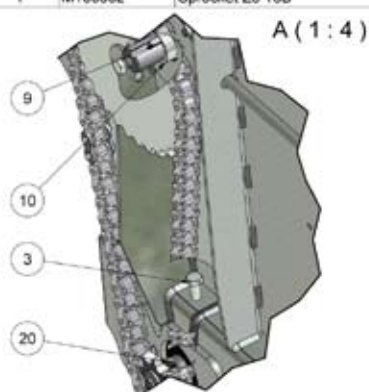
Alle kanten reifen
Breaks all edges

H&G		1 : 8	DS/ISO 2768-m	A3
Hedensted Gruppen		No		1 / 1
M100195				
Main container assembly 65M				

A	Made	13-12-2012	KC
REV	DESCRIPTION	DATE	APPROVED
REVISION HISTORY			

SPARE PARTS

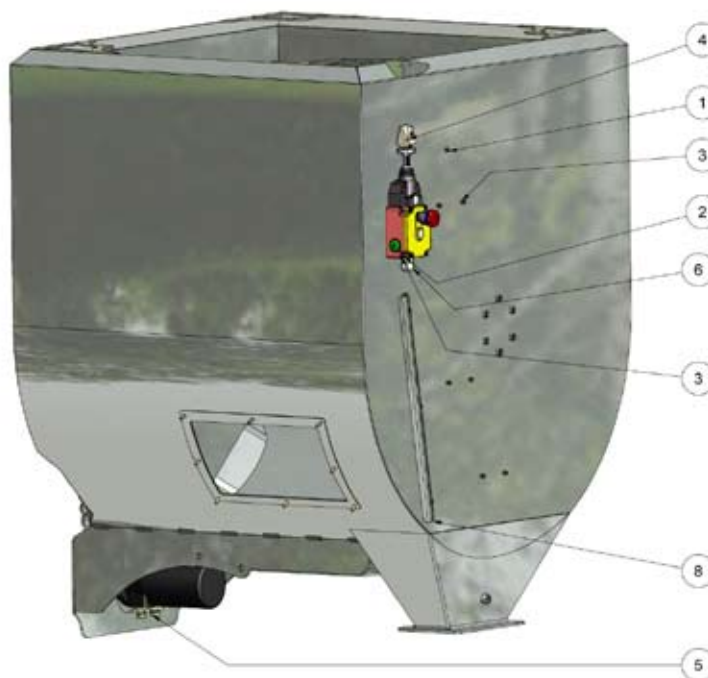
PARTS LIST			
ITEM	QTY	PART NUMBER	DESCRIPTION
1	2	10212035	Bolt unbraco cyl 12x35 FZB
2	1	11408016	Hexagon bolt M8x16 FZB
3	1	11412080	Hexagon bolt 12x80 FZB
4	6	12608000	Nut M8 stainless A2
5	6	12908016	Hexagon bolt 8x16 A2
6	5	12912035	Hexagon bolt M12x35 A2
7	1,700 m	190580	Rollerchain 16B L=1625,6
8	1	190582	Chain connection link 16B 25.4
9	1	197044	Key 10x8x30
10	1	250088	Bushing for worm
11	1	250172	Hub assembly 2 for worm
12	1	25416	Container sheet 11
13	1	426384	Grease fitting M10x1 straight
14	1	4809335	Washer type SRKB ø9x35x3
15	1	M100036	Sprocket Z-32 1inch Ø35
16	1	M100044	Hub complete for mixer
17	1	M100096	Washer for sprocket
18	3	M100099	Spacer for sprocket
19	1	M100156	65M Container
20	1	M100194	T-Motor 400ccm
21	1	M100292	Thread pipe 65M
22	1	M100320	Mixer for 65M
23	1	M100352	Sprocket Z8 16B



A	Made	13-12-2012	KC
B	Part List updated	08-04-2013	KC
REV	DESCRIPTION	DATE	APPROVED

Alle kanten reffen Breaks all edges			
HG Hedensted Gruppen	1:8	DS/ISO 2768-m	A3
		No	1/1
M100321			
65M Container assembly 1			

PARTS LIST			
ITEM	QTY	PART NUMBER	DESCRIPTION
1	10	12905012	Hexagon bolt m5x12 Inox
2	4	12905040	Hexagon bolt M5x40 A2 Din 933
3	14	19905000	Self-locking nut M5 Inox A2
4	1	425934	Wire emergency stop switch
5	2	477128	Male stud 12L 1/2"
6	1	600455	Cabel gland M20 Ø5-12
7	1	M100321	65M Container assembly 1
8	1	M100323	Cable canal



A	Made	13-12-2012	KC
B	Part List updated	08-04-2013	KC
REV	DESCRIPTION	DATE	APPROVED

Alle kanten reffen Breaks all edges			
HG Hedensted Gruppen	1:8	DS/ISO 2768-m	A3
		No	1/1
M100324			
65M Container assembly 2			

PARTS LIST			
ITEM	QTY	PART NUMBER	DESCRIPTION
1	1	10205016	Bolt unbrako cyl 5x16 FZB
2	8	11408016	Hexagon bolt M8x16 FZB
3	14	11408030	Hexagon bolt M8x30 FZB
4	1	11408060	Hexagon bolt M8x60 FZB
5	4	11410025	Hexagon bolt M10x25 FZB
6	2	11412035	Hexagon bolt M12x35 FZB
7	1	17905000	Self-locking nut M5 FZB
8	4	17908000	Self-locking nut M8 FZB
9	8	21010525	Hexagon bolt m10x1.25x25 FZB
10	4	42100000	Washer type TBRSB 10.5x28x6 FZB
11	2	42120000	Washer type TBRSB 13x36x6 FZB
12	1	423419	Cable clamp
13	1	424505	Clutch housing for kubota
14	1	425014	Kobling centaCFKE081-16/32-Z13
15	4	430051	Vibration absorber
16	1	468302	Kubota ingine D 902
17	1	468310	Airfilter kit 469
18	1	468312	Fuelot 378
19	4	474010	Hose clamp 25-35
20	5.0 l	476505	Engine oil Q8 T520 15W-40
21	1	M100189	Upper hose F 65M
22	1	M100190	Lower hose F 65M
23	2	M100207	Rear motor brace
24	1	M100208	Left motorbrace
25	1	M100209	Right motor brace
26	1	M100238	Hydrostate assembly
27	1	M100241	Plate for throttle cable
28	1	M100246	Fuel filter brace
29	1	M100299	Plate for airfilter

REV	DESCRIPTION	DATE	APPROVED
A	Made	13-12-2012	KC
B	Partlist updated	16-03-2013	KC

REVISION HISTORY

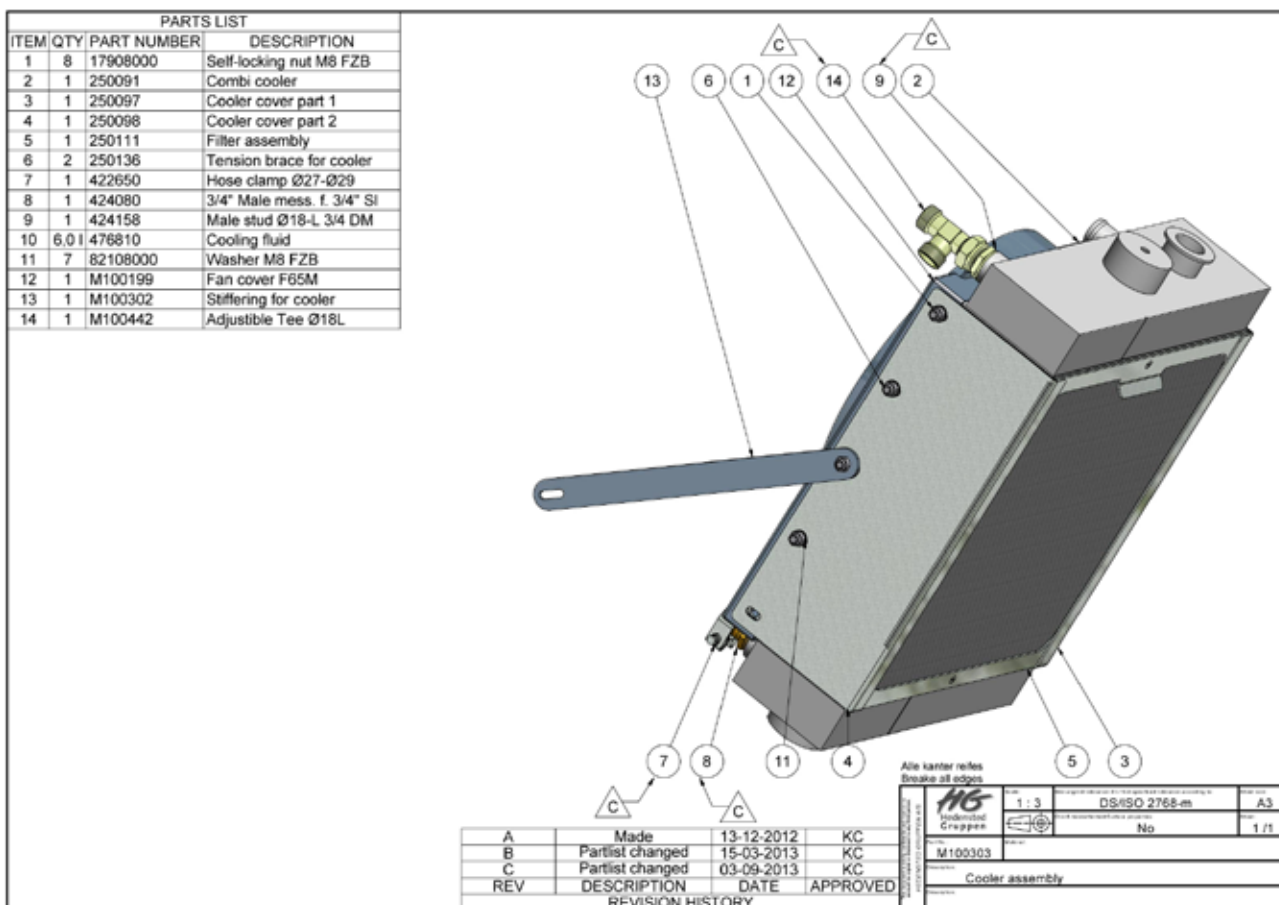
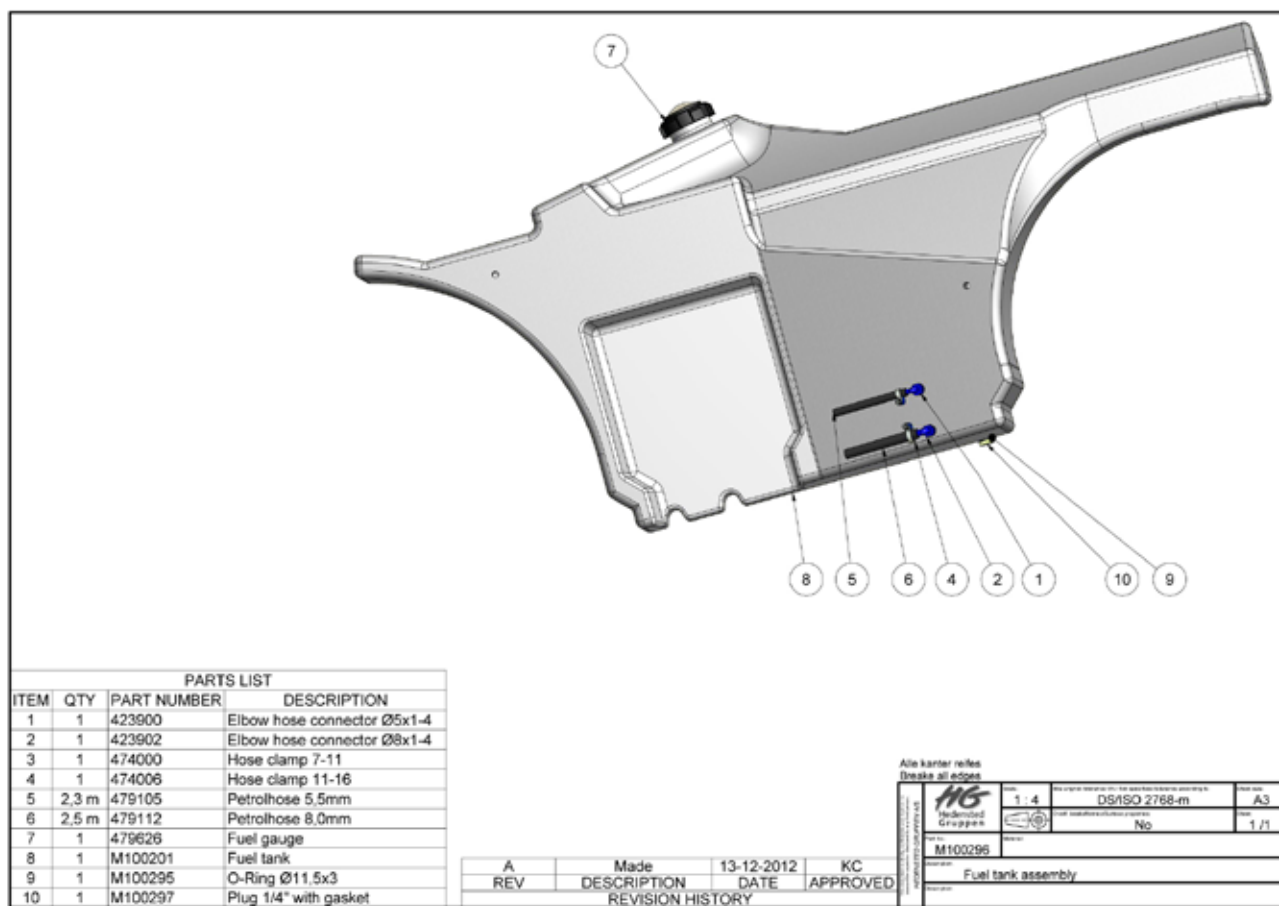
Alle kanten reffen Breaks all edges			
1:4	DS/ISO 2768-m	A3	1/1
M100298			
Engine assembly			

PARTS LIST			
ITEM	QTY	PART NUMBER	DESCRIPTION
1	4	10208020	Bolt unbrako cyl 8x20 FZB
2	10	11410020	Hexagon bolt M10x20 FZB
3	12	17905000	Self-locking nut M5 FZB
4	4	17908000	Self-locking nut M8 FZB
5	2	20405030	Hexagon countersunk M5x30 FZB
6	10	64405040	Cup head square neck bolt M5x40
7	5	82110000	Washer M10 FZB
8	1	M100221	Engine cover left
9	1	M100222	Engine cover right
10	5	M100240	Assembly plate
11	1	M100388	Top plate for motor cover
12	1	M100389	Bottom plate for motor cover
13	12	M100390	Bushing for stiffening
14	1	M10401	Expanded metal part 1
15	1	M10402	Expanded metal part 2
16	1	M10403	Expanded metal part 3
17	1	M10404	Expanded metal part 4

REV	DESCRIPTION	DATE	APPROVED
A	Made	13-12-2012	KC
B	Part List updated	08-04-2013	KC

REVISION HISTORY

Alle kanten reffen Breaks all edges			
1:6	DS/ISO 2768-m	A3	1/1
M100239			
Motorcover assembly			



PARTS LIST			
ITEM	QTY	PART NUMBER	DESCRIPTION
1	1	250117	Hub for mixer worm
2	1	250134	Spherical roller bearings 30-72-23
3	1	250146	Wiper 55x45x7

Alle kanten reifen
Breaks all edges

Hedensted Gruppen

1:1

DS:ISO 2768-m

No

A3

1/1

250115

Hub assembly 1 for worm

A	Made	12-12-2011	KC
REV	DESCRIPTION	DATE	APPROVED

REVISION HISTORY

PARTS LIST			
ITEM	QTY	PART NUMBER	DESCRIPTION
1	1	250118	Hub for sealings
2	1	250129	O-ring 92x2.5
3	2	250146	Wiper 55x45x7

Alle kanten reifen
Breaks all edges

Hedensted Gruppen

2:1

DS:ISO 2768-m

No

A3

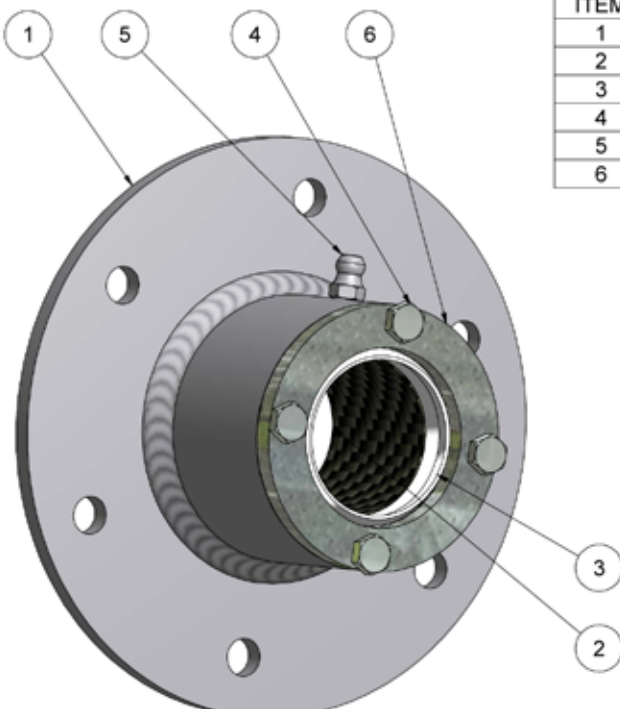
1/1

250116

Hub assembly with sealings

A	Made	12-12-2011	KC
REV	DESCRIPTION	DATE	APPROVED

REVISION HISTORY



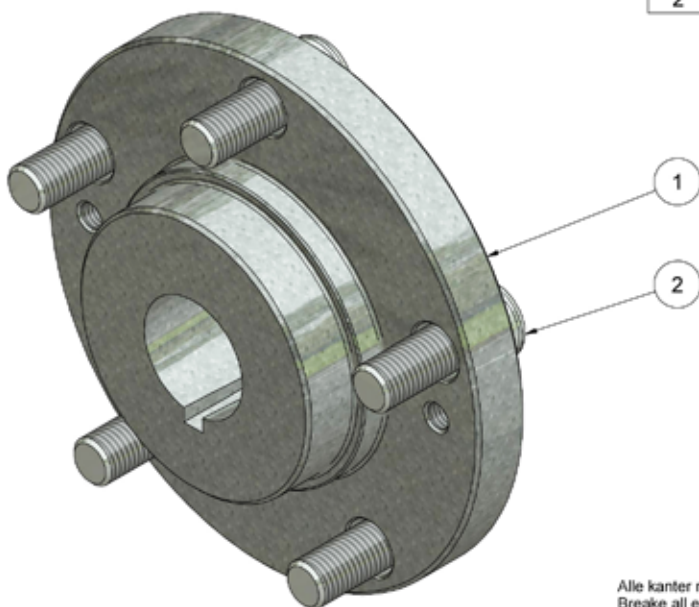
PARTS LIST			
ITEM	QTY	PART NUMBER	DESCRIPTION
1	1	250119	Hub for slide bearing
2	1	250110	FW Bushing 35-41-40
3	1	250145	Wiper 45x35x7
4	4	12905012	Hexagon bolt m5x12 Inox
5	1	423068	Grease fitting M6 straight
6	1	250142	Tension plate for bearing housing

Alle kanter reifes
Breake all edges

Scale: 1:1
Material: DS/ISO 2768-m
Sheet size: A4
Sheet: 1/1

A	REV	Made	DESCRIPTION	09-12-2011	DATE	KC	APPROVED
REVISION HISTORY							

Part No: 250172
Description: Hub assembly 2 for worm



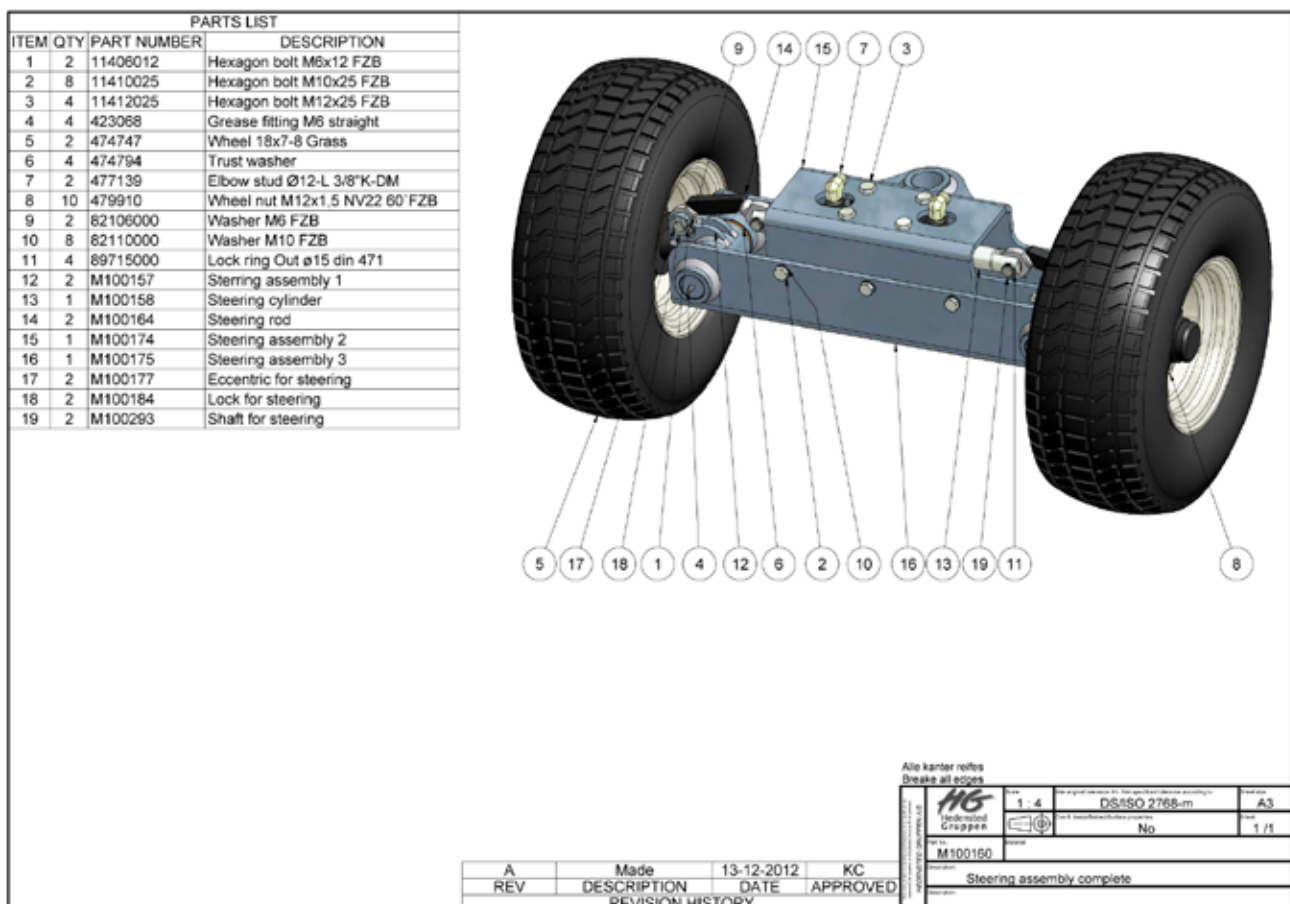
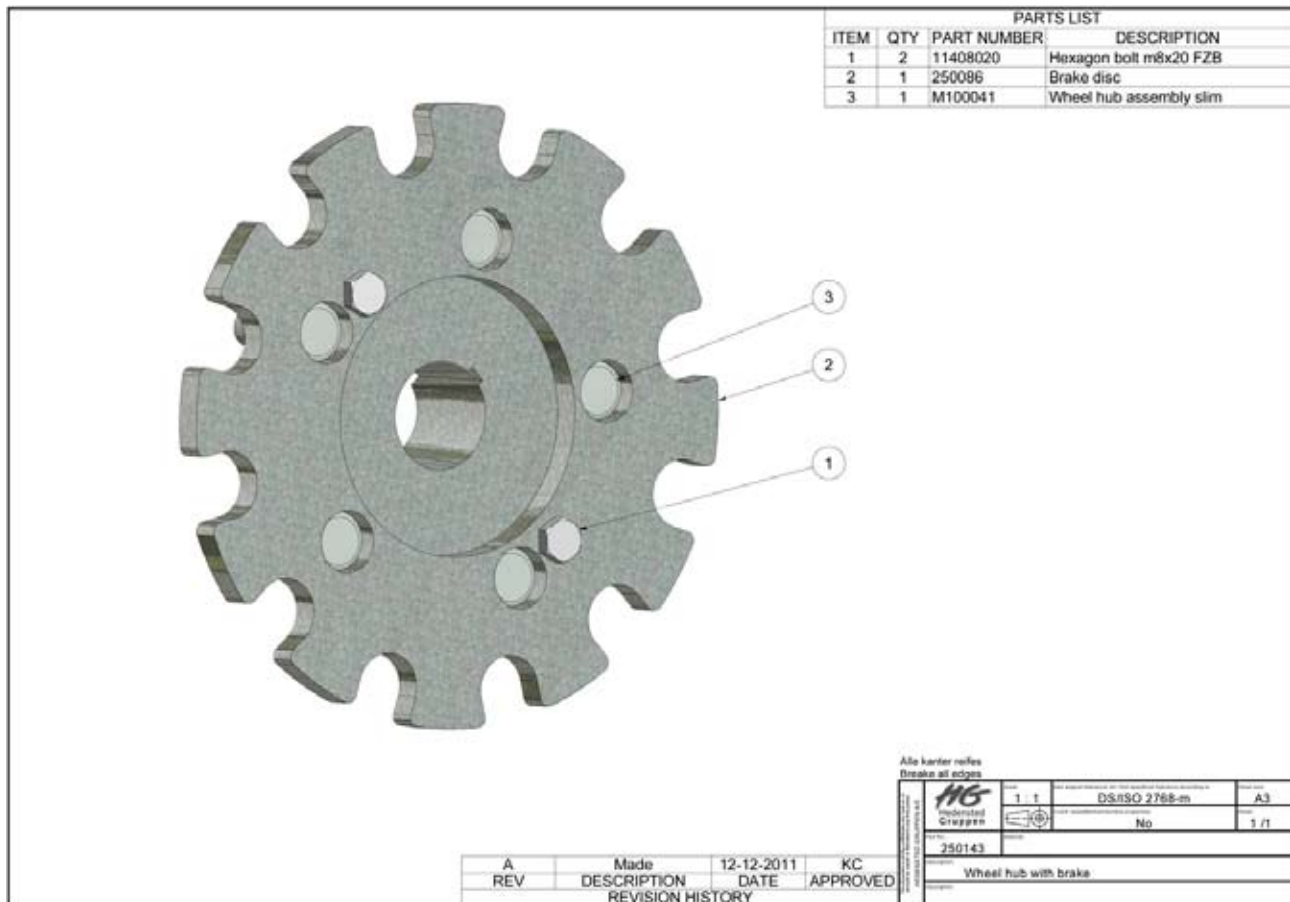
PARTS LIST			
ITEM	QTY	PART NUMBER	DESCRIPTION
1	1	M100040	Wheel hub slim
2	5	479920	Hub bolt M12-1,5x36

Alle kanter reifes
Breake all edges

Scale: 1:1
Material: DS/ISO 2768-m
Sheet size: A4
Sheet: 1/1

A	REV	Made	DESCRIPTION	09-12-2011	DATE	KC	APPROVED
REVISION HISTORY							

Part No: M100041
Description: Wheel hub assembly slim



SPARE PARTS

PARTS LIST			
ITEM	QTY	PART NUMBER	DESCRIPTION
1	1	250106	Expanded metal WSE020503 Pattern 0205-0606 43%
2	1	25436	Frame 1 for filter
3	1	25437	Frame 2 for filter
4	10	20404006	Hexagon countersunk head 4x6 FZB

All Bolts must be grinded smooth with surface

Alle kanten reifen
Brechen alle ecken

HGS		1:4	DS/ISO 2768-m	A3
Industriedruck		No		1/1
250111				
Filter assembly				

REV	DESCRIPTION	DATE	APPROVED
A	Made	07-12-2011	KC

REVISION HISTORY

PARTS LIST			
ITEM	QTY	PART NUMBER	DESCRIPTION
1	2	423706	Plug for valvecoil
2	4	477120	Male stud Ø15-L 1/2" DM
4	1	M100253	Valve block 4/3 closed center
5	1	M100254	Male test nipple 1/4" BSP

Alle kanten reifen
Brechen alle ecken

HGS		1:1	DS/ISO 2768-m	A3
Industriedruck		No		1/1
M100259				
Valve assembly for mixer				
For 65M				

REV	DESCRIPTION	DATE	APPROVED
A	Made	13-12-2012	KC
B	Part List Changed	19-03-2013	KC
C	Part List Changed	03-09-2013	KC

REVISION HISTORY

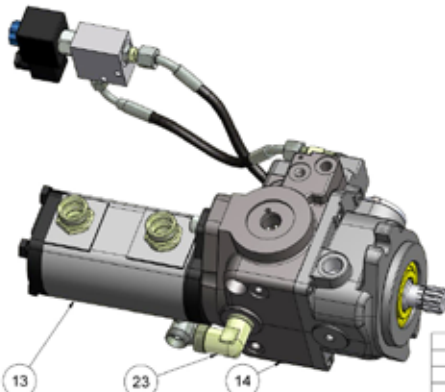
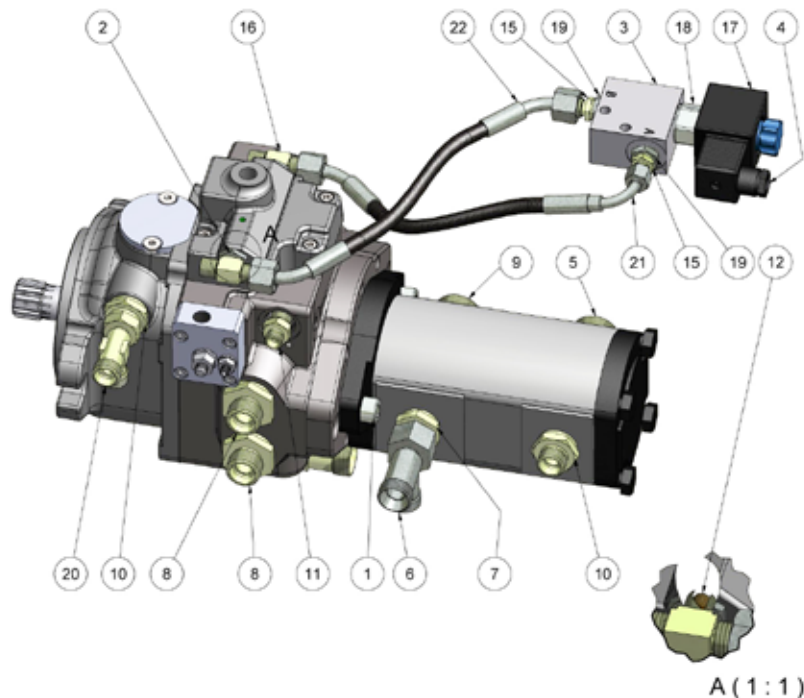


PARTS LIST			
ITEM	QTY	PART NUMBER	DESCRIPTION
1	4	12906030	Hexagon bolt m6x30 A2
2	1	250115	Hub assembly 1 for worm
3	1	250116	Hub assembly with sealings

A	REV	Made	DESCRIPTION	09-12-2011	KC	APPROVED
REVISION HISTORY						

Ade kanter rekes Breaks all edges		1-1	DS/ISO 2768-m	A3
Hedensted Gruppen		No		1/1
M100044		Hub complete for mixer		

PARTS LIST			
ITEM	QTY	PART NUMBER	DESCRIPTION
1	2	10210020	Bolt unbraco cyl 10x20 FZB
2	2	216783	Reducing bushing 1/4"x1/8"
3	1	423570	Alu valveblock pipe mounted
4	1	423706	Plug for valvecoil
5	1	424069	Male stud 22L 1/2" DM
6	1	477072	Adjustable tee SL15 L
7	1	477120	Male stud Ø15-L 1/2" DM
8	2	477124	Male stud Ø15-L 3/4 DM
9	1	477126	Male stud 22L 3/4" DM
10	2	477128	Male stud 12L 1/2"
11	1	M100071	Male stud 6L 1/4"
12	2	M100107	Nozzle M6 Ø 0,7
13	1	M100181	Gearpump 11-4,5
14	1	M100182	Hydraulic hydrostate 21cm
15	2	M100224	Male stud Ø6L 1/8"
16	2	M100229	Tee Ø6L 1-8 K-DM
17	1	M100233	Solenoid 12v DC Ø13
18	1	M100234	Cartridge valve NC
19	2	M100235	Nipple adabter 3/8" 1/8"
20	1	M100360	Adjustable tee ø12
21	1	M100361	Hose 1 safty valve
22	1	M100362	Hose 2 safty valve
23	1	M100379	Elbow 22L K-DM

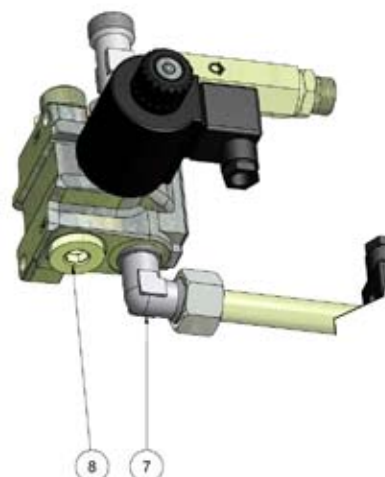
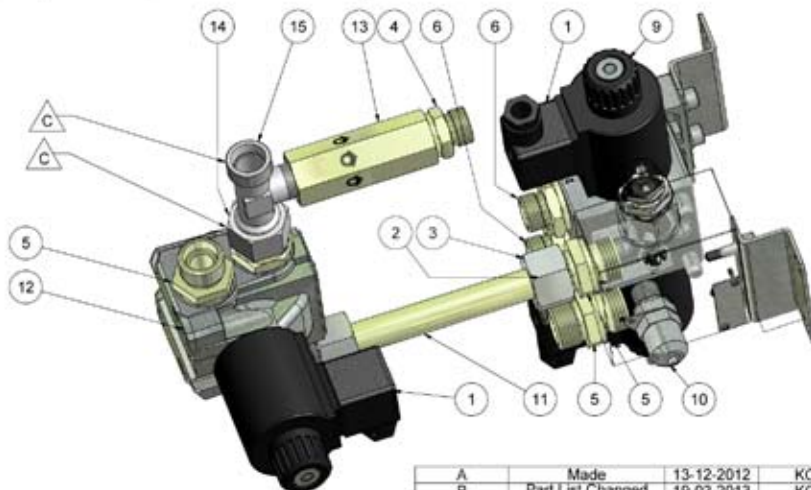


A	REV	Made	DESCRIPTION	13-12-2012	KC	APPROVED
B		Partlist updated		16-03-2013	KC	
REVISION HISTORY						

Ade kanter rekes Breaks all edges		1-2	DS/ISO 2768-m	A3
Hedensted Gruppen		No		1/1
M100238		Hydrostate assembly		

SPARE PARTS

PARTS LIST			
ITEM	QTY	PART NUMBER	DESCRIPTION
1	3	423706	Plug for valvecoil
2	2	424118	Cutting ring 15L
3	2	424122	Union 15L M22x1.5
4	1	477118	Male stud 12L 3/8"
5	3	477120	Male stud Ø15-L 1/2" DM
6	2	477128	Male stud 12L 1/2"
7	1	477141	Elbow 15L 1/2" K DM
8	1	477300	Hydraulic plug 1/2" bsp
9	1	M100253	Valve block 4/3 closed center
10	1	M100254	Male test nipple 1/4" BSP
11	1	M100255	Hydraulic pipe Ø15
12	1	M100262	Stand alone solenoid valve
13	1	M100285	Contra valve 3/8"
14	1	M100440	Male stud w nut 1/2" ø15L
15	1	M100441	Tee ø15L 3/8" ø15L

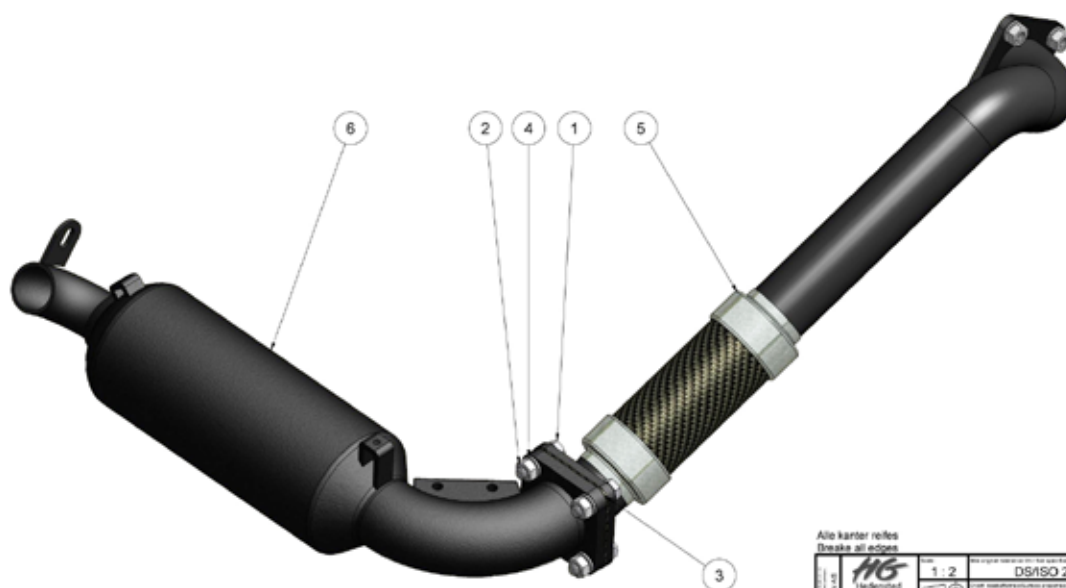


REV	DESCRIPTION	DATE	APPROVED
A	Made	13-12-2012	KC
B	Part List Changed	19-03-2013	KC
C	Part List Changed	03-09-2013	KC

Alle kanten reiles
Breaks all edges

	1:1.5	DS/ISO 2768-m	A3
	No	No	1/1
M100256			
Valve assembly for feeding pump			
For 65M			

PARTS LIST			
ITEM	QTY	PART NUMBER	DESCRIPTION
1	4	11408030	Hexagon bolt M8x30 FZB
2	8	1508000	Nut M8 FZB
3	1	467160	Exhaust Gasket Kubota 722
4	12	82108000	Washer M8 FZB
5	1	M100223	Exhaust system F65
6	1	M100251	Exhaust muffler for 65M



REV	DESCRIPTION	DATE	APPROVED
A	Made	13-12-2012	KC

Alle kanten reiles
Breaks all edges

	1:2	DS/ISO 2768-m	A3
	No	No	1/1
M100301			
Exhaust system for 65M			

12 EU Declaration of conformity

Hedensted Gruppen A/S
Vejlevej 15
DK-8722 Hedensted
Tel. (+45) 75 89 12 44
Fax (+45) 75 89 11 80
www.hedensted-gruppen.dk

hereby declares that:

HG Feeder 65 M
HG item no. 250012

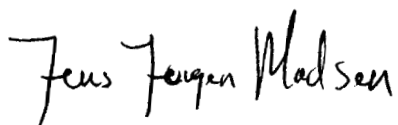
conforms with:

The Machine Safety Directive 2006/42/EC

**under application of the following
harmonising standards:**

DS/EN 12100-1:2005
DS/EN 13857:2008

Hedensted, den 31. maj 2012



Jens Jørgen Madsen
CEO



HG
**HEDENSTED
GRUPPEN**

Vejlevej 15, DK-8722 Hedensted
Phone (+45) 75 89 12 44
Fax (+45) 75 89 11 80
www.hedensted-gruppen.dk