



INDIVIDUAL DATA SHEET

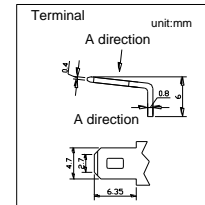
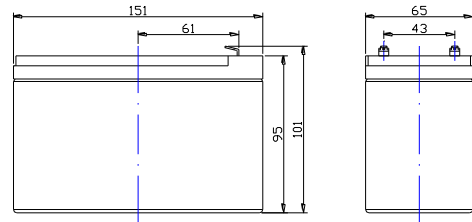
DC7-12

7AH@20HR

12-Volt

DEEP CYCLE

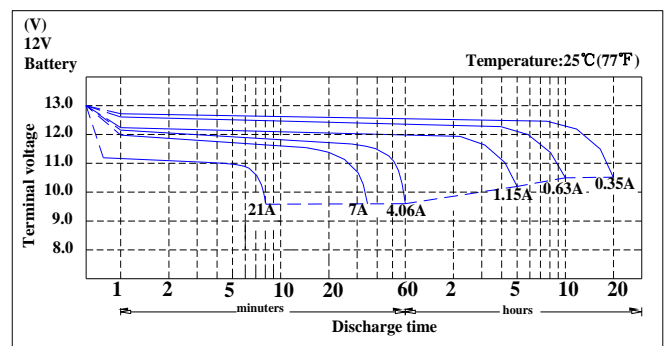
Maintenance-Free
 Sealed AGM Battery



Specifications

Nominal Voltage	12V	
Nominal Capacity	7AH@20hr. rate to 1.75V per cell@25°C	
Overall Height (H)	101±1.5mm	3.98"
Container Height (h)	95±1.5mm	3.74"
Length	151±1mm	5.94"
Width	65±1mm	2.56"
Weight	Approx. 2.50kg	5.51lbs.
Terminal Type	F1- Faston Tab187	
Container Material	ABS: Standard (UL 94-HB)	

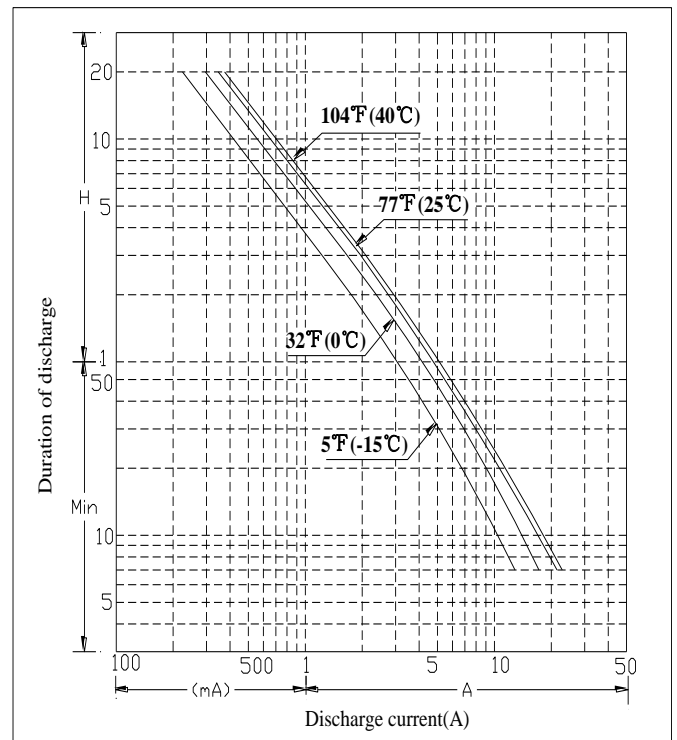
Discharge characteristics 77°F (25°C)



Characteristics

Capacity	7AH@20 hr. rate to 1.75V per cell@25°C
	6.3AH@10 hr. rate to 1.75V per cell@25°C
	5.74AH@5 hr. rate to 1.70V per cell@30°C
Internal Resistance	19mΩ@Full charged 77°F (25°C)
Operating Temperature Range	Discharge: -15°C ~ +50°C (5°F ~ 122°F)
	Charge: -15°C ~ +40°C (5°F ~ 104°F)
	Storage: -15°C ~ +40°C (5°F ~ 104°F)
Recommended Operating Temperature Range	+74°F (23°C) to +80°F (27°C)
Self-Discharge	Less than 10% after 90 days, can be stored up to 6 months at 25°C (77°F); Fully recharging is required before usage, For higher temperatures the time interval will be shorter.
Max. Discharge Current	105A (5s)
Maximum Charge Current(A)	1.75A
Float Charging Voltage	13.5 to 13.8 VDC/unit Average at 77°F (25°C)
Equalization and Cycle Service Charging Voltage	14.4 to 14.7 VDC/unit Average at 77°F (25°C)

Duration of discharge vs. Discharge current



Constant Current Discharge Rating Amperes @ 77°F (25°C)

Cut off voltage V/cell	15M	30M	45M	1H	2H	3H	5H	8H	10H	12H	20H
1.75V	10	7	5	4.0	2.1	1.6	1.1	0.8	0.63	0.54	0.35

Note The above data are average values, and can be obtained with 3 charge/discharge cycles. These are not minimum values.