

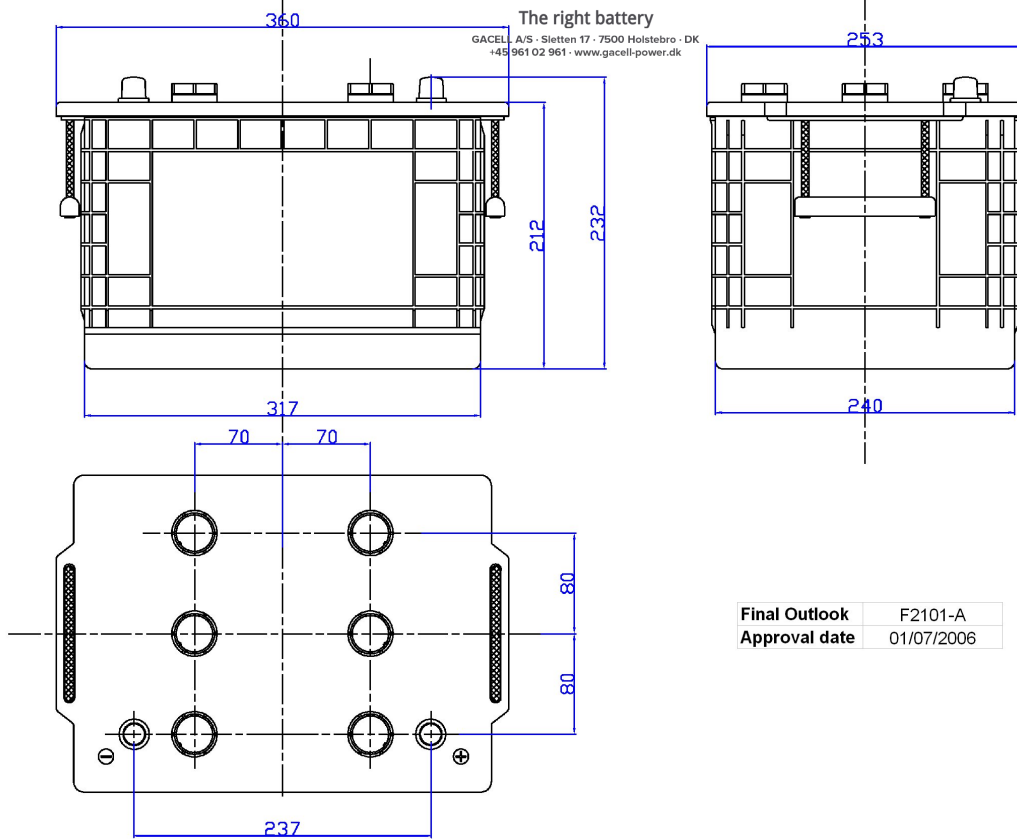
Central Article Code: F21100W01-A
 ETN Code or Other: 64502

Created: 06/09/2005
 Modified: 04/03/2014

Your supplier



The right battery
 GACELL A/S · Sletten 17 · 7500 Holstebro · DK
 +45 961 02 961 · www.gacell-power.dk



Final Outlook	F2101-A
Approval date	01/07/2006

PERFORMANCES

Voltage (V):	12 V
C20 (Ah):	145.0 20 h
Rc (min):	0
Cranking (A):	1000 EN
Vibration:	V2 (35Hz/6g/2h)
Endurance:	E2 (90 cycles@50%)
Charge:	WET
Technology:	Vented/Flooded
Grid:	Hybrid

WEIGHT AND STD. DIMENSIONS

Lead Weight (kg ± 5%):	22.5
Battery Weight (kg ± 5%):	38.1
Volume acid (l ± 5%):	9.2
Length (mm ± 2):	360
Width (mm ± 2):	253
Height (mm ± 2):	240

All figures show nominal values. Tolerances are according to EN50342 and applicable European Regulations.

CONTAINER

Type:	F21	BLACK
Hold Down:	B0	
H.D. Adapter:	No	

COVER

Type:	Flat/Screw	BLACK
Polarity:	ETN 6	
Terminals:	EN taper post	
Terminal Adapter:	No	
SOCI:	No	
Ventilation:	Independent	
Filter:	No	
Lateral Plug:	No	

PLUGS

Type:	6 x M27	BLACK
-------	---------	-------

HANDLES

Type:	2 x Rope (Rigid)	BLACK
-------	------------------	-------

OTHERS

Degassing Tube:	No
-----------------	----