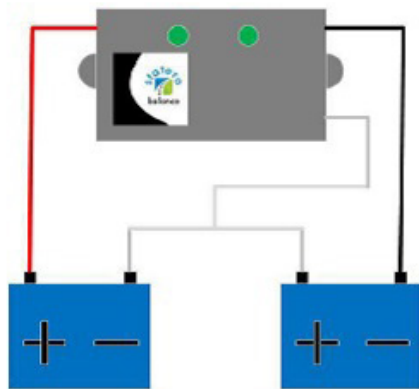


ENGLISH

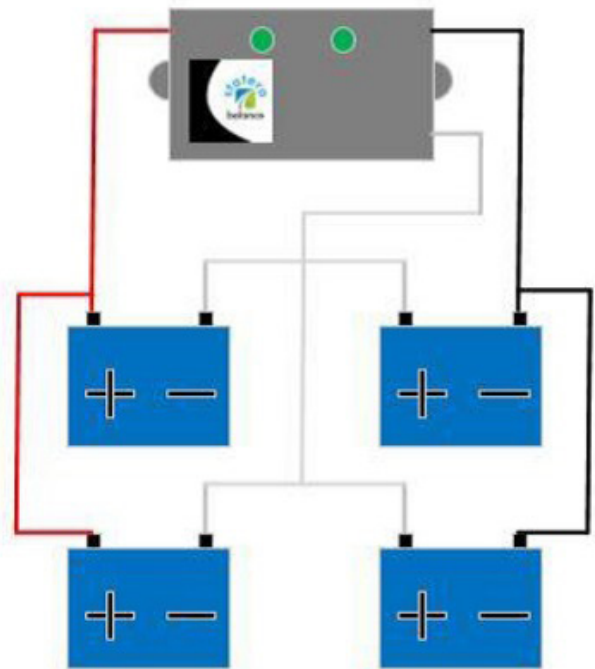
How to connect your IQLizer

How to connect your IQLizer

24V system 2 x 12V in series



24V system 2 x 12V in series + 2 x 12V parallel

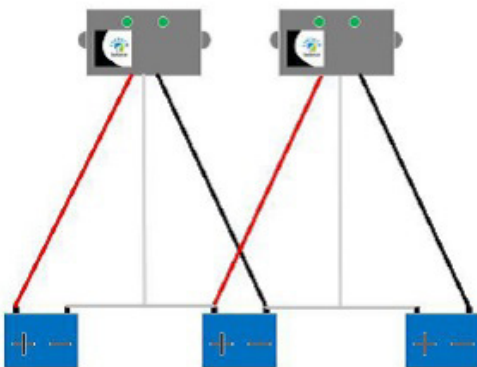


Red to +

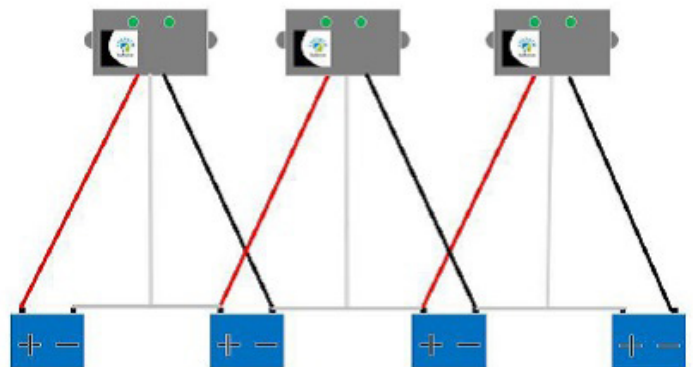
Black to -

White to connection between batteries

36 V system 3 x 12V in series (2 x IQLizer)



48V system 4 x 12V in series (3 x IQLizer)

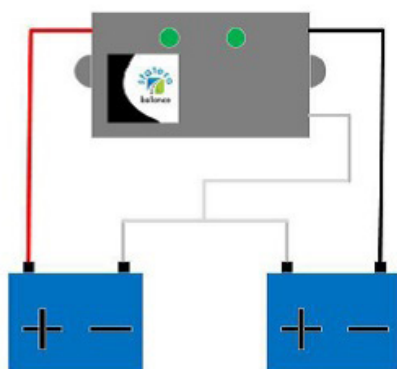


DANSK

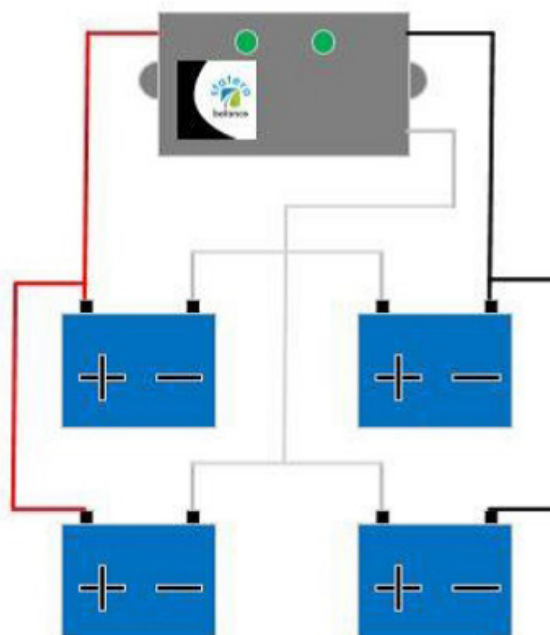
Sådan monterer du din IQLizer

Sådan monterer du din IQLizer

24V system 2 x 12V i serie



24V system 2 x 12V i serie + 2 x 12V parallel

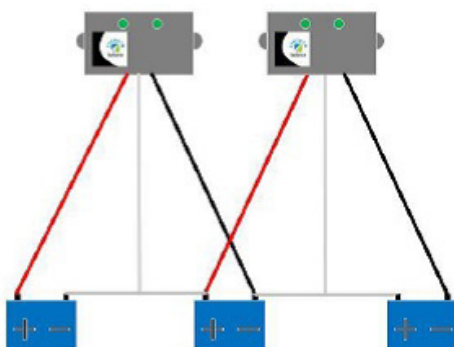


Rød til +

Sort til -

Hvid til forbindelsen mellem batterierne

36 V system 3 x 12V i serie (2 x IQLizer)



48V system 4 x 12V i serie (3 x IQLizer)

