



CTEK MXS 7.0

7 A



# MEETING NEEDS TO CHARGE LARGER BATTERIES

## CTEK MXS 7.0

The MXS 7.0 is the perfect universal 12 V charger. It is ideal for charging larger batteries such as caravan, RV, boat and car batteries. These types of vehicles often demand features that can solve a broad range of battery-related problems. The MXS 7.0 offers features such as battery diagnosis that shows if a battery can receive and retain a charge, a special reconditioning function that restores stratified and deeply discharged batteries, unique maintenance charging, a mode for optimised charging during cold winter days and the charging of demanding AGM batteries (i.e. Optima). It also has a power supply mode which allows the battery to be disconnected from the vehicle without losing important configurations.

The MXS 7.0 is a fully automatic 8-step charger that delivers 7 A to 12 V batteries from 14- 150 Ah and is suitable for maintenance charging up to 225 Ah. The charger is IP65 classified (splash and dust proof), designed to protect vehicle electronics, non-sparking, reverse polarity protected, and short-circuit proof. It is delivered with a 5-year warranty.

### TECHNICAL DATA

CHARGING VOLTAGE	14.4/14.7/15.8 /13.6 V
CHARGING CURRENT	Max 7 A
TYPE OF CHARGER	8 step, fully automatic charging cycle
TYPE OF BATTERY	12 V lead-acid batteries
BATTERY CAPACITY	14- 150 Ah, up to 225 Ah for maintenance
INSULATION	IP65 (splash and dust proof)



**AUTO**  
Fully automatic for optimal charging



**12V**  
For all lead-acid batteries



**FULLY CHARGED BATTERY MAINTENANCE CHARGING**



**AGM**  
For charging in cold conditions and AGM batteries

**RECOND**

Recondition of deeply discharged batteries

**SUPPLY**

Use the charger as a power supply



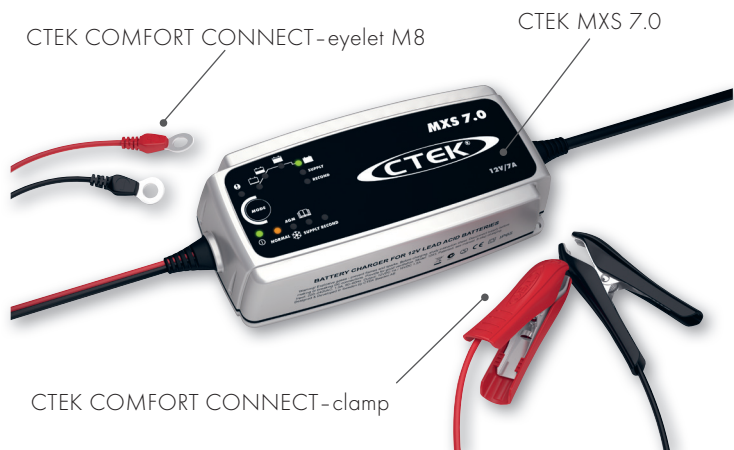
Din forhandler



GACELL A/S - Sletten 17 - DK 7500 Holstebro - 961 02 961

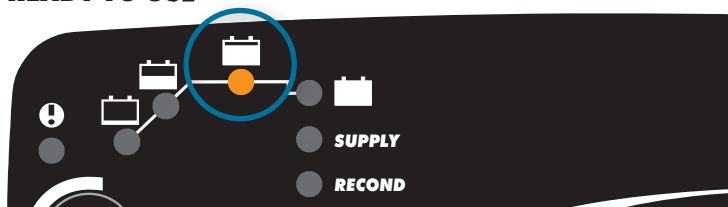


THE SMARTEST BATTERY CHARGERS IN THE WORLD



- Fully automatic charging and maintenance in 8 steps maximizes battery life and performance
- Numerous accessories simplifies using the same charger for multiple batteries
- Water-resistant so that the solution could be taken to the problem even if it rains or snows
- Power Supply that simplifies battery replacement without losing vehicle memory
- Patented maintenance charge for a unique combination of maximized life and performance
- Recondition of deep discharged batteries
- Patented desulphation that extends the battery life
- No sparks, short-circuit proof and reverse-polarity protected for untroubled usage
- Automatic detection of end-of-life batteries that eliminates surprises

**READY TO USE**



The table shows the estimated time for empty battery to 80 % charge.

BATTERY SIZE (Ah)	TIME TO 80 % CHARGED
14	2 h
50	6 h
100	11 h
150	17 h

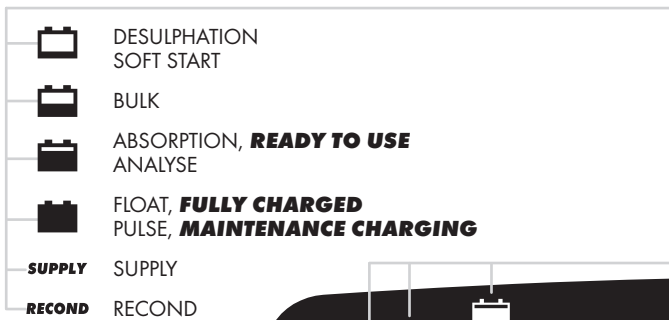
Din forhandler



GACELL A/S - Sletten 17 - DK 7500 Holstebro - 961 02 961

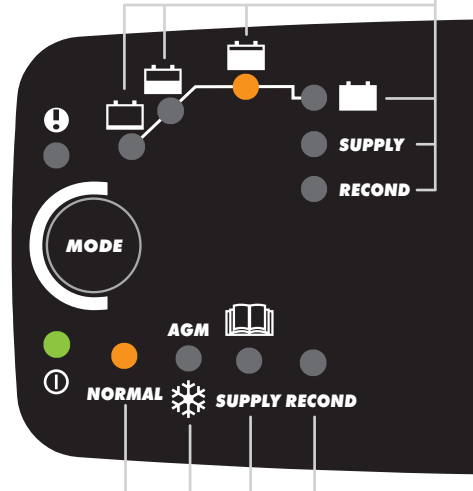
[www.ctek.com](http://www.ctek.com)

**CTEK CHARGING**



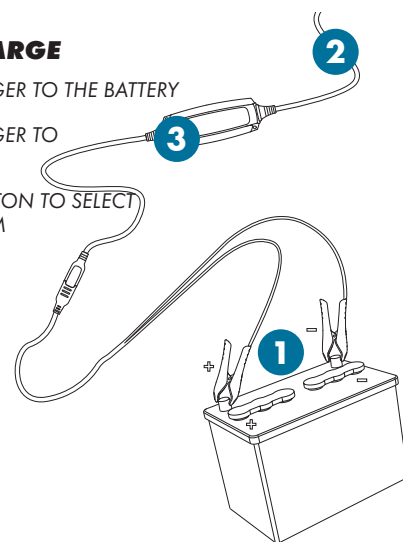
**PROGRAMS**

<b>NORMAL</b>	7 A/14.4 V
<b>AGM</b>	7 A/14.7 V
<b>SUPPLY</b>	7 A/13.6 V
<b>RECOND</b>	1.5 A/15.8 V



**CONNECT AND CHARGE**

- 1 CONNECT THE CHARGER TO THE BATTERY
- 2 CONNECT THE CHARGER TO THE WALL SOCKET
- 3 PRESS THE MODE-BUTTON TO SELECT CHARGING PROGRAM



**GUARANTEED QUALITY WITH CTEK**

CTEK customer support is available to answer any questions related to charging and CTEK chargers. Safety, simplicity and flexibility characterizes all products and solutions developed and sold by CTEK. CTEK supply chargers to more than 60 countries throughout the world. CTEK is also a reliable OEM supplier to many of the world's most prestigious car and motorcycle manufacturers.

Contact customer support: [info@ctek.com](mailto:info@ctek.com)



THE SMARTEST BATTERY CHARGERS IN THE WORLD